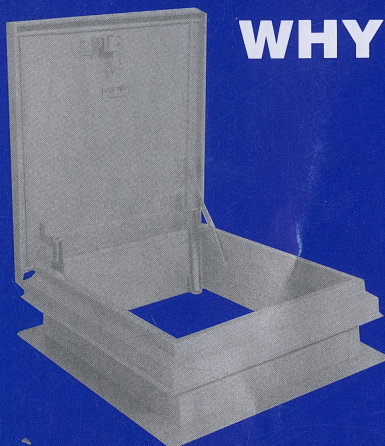


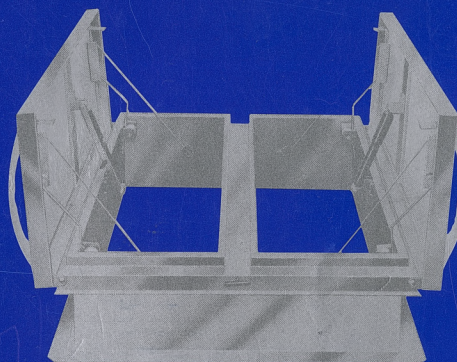
DUR-RED®

■ **PRODUCTS** ■

WHY NOT THE BEST?

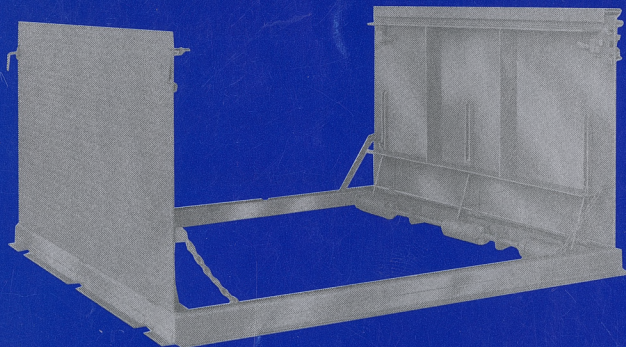


LADDER HATCH



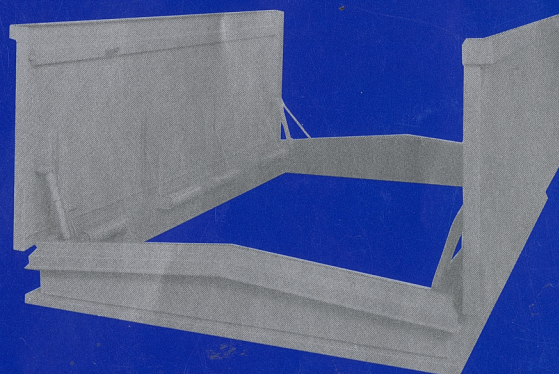
SMOKE HATCH

**Designers and Manufacturers of Quality Doors.
Trouble-Free Performance**



FLOOR DOOR

THE BEST FROM THE WEST



EQUIPMENT HATCH

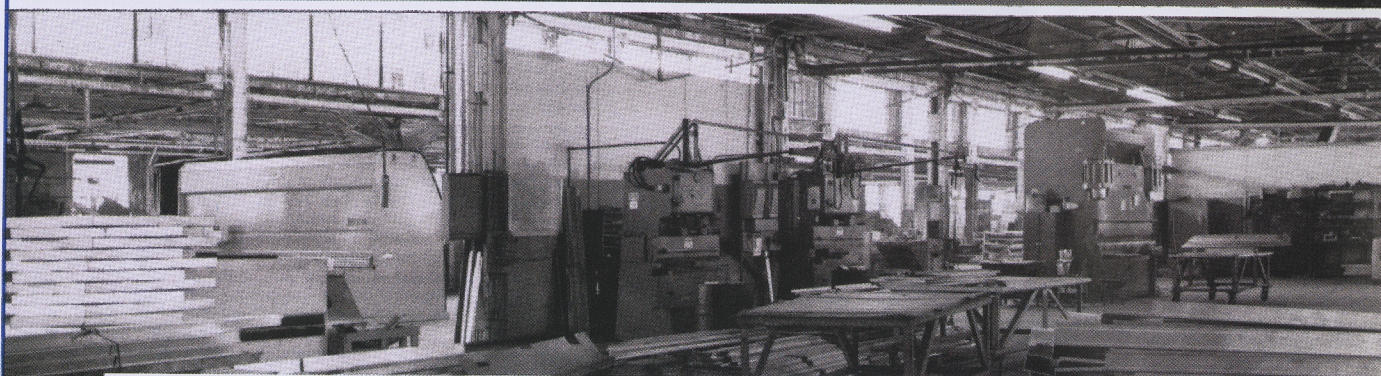
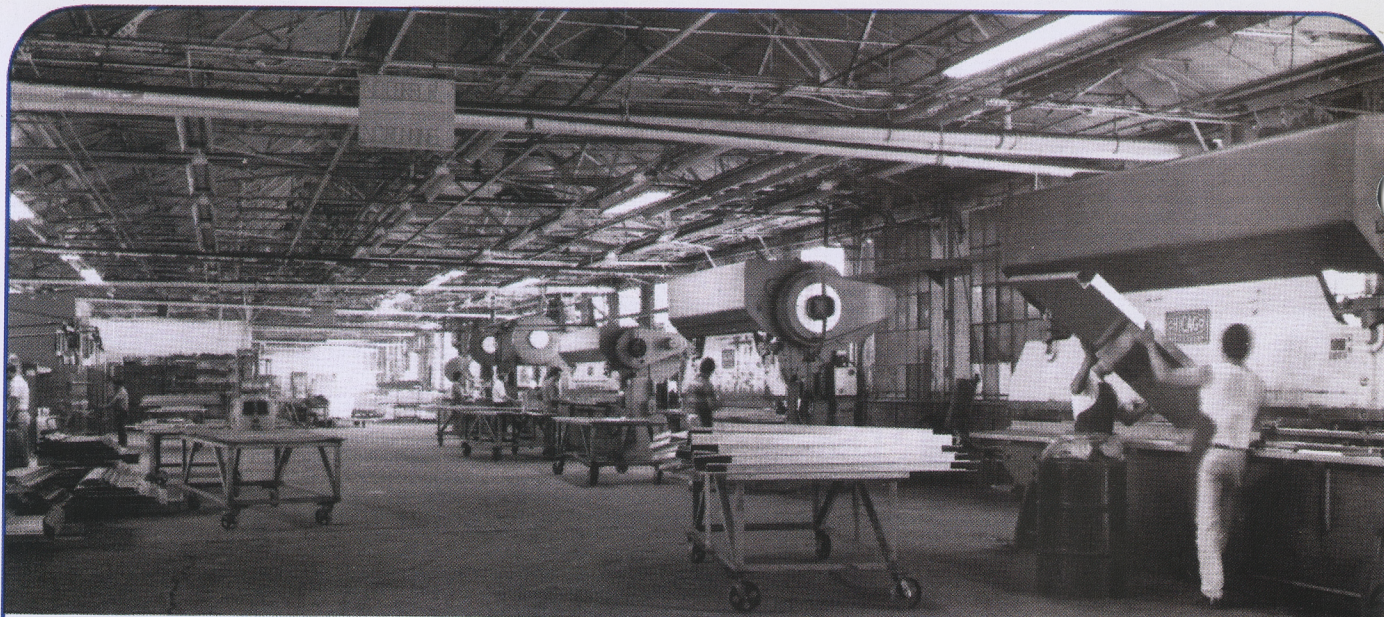
NEW!

All new Tor-Key™ Adjustable Torsion spring. Patent pending. See page 3.

**ROOF HATCHES & SMOKE HATCHES
FLOOR DOORS & EQUIPMENT HATCHES
CEILING ACCESS & METAL BUILDING CURBS**

**DEALER INQUIRIES
WELCOME
Call or Write
(see page 16)**

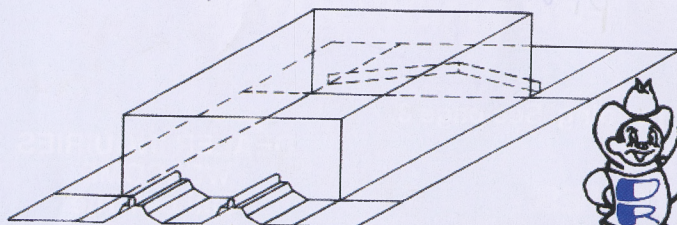
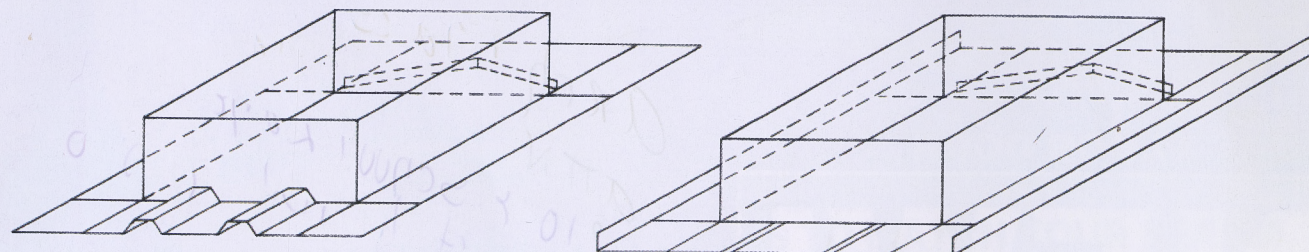
©Copyright 2007 Red Plastic Co., Inc. dba DUR-RED® Products



DUR-RED® PRODUCTS

Thank you for giving us this opportunity to tell you about our company. The Dur-Red products name has been in use since 1960. We have always been located in Los Angeles, California. Dur-Red products factory has 200,000 square feet of manufacturing and warehouse area and provides the space needed for continual growth, being located on 10 acres which can be expanded when necessary. We perform all of the operations—from initial metal shearing, punching, forming, and welding—to the final assembly of the doors. Through an extensive research and continuous developmental program, outstanding construction techniques and design features have been perfected. They are responsible for Dur-Red Products establishing a new high standard of door.

CUSTOM CURBS FOR MOST MAJOR METAL BUILDING PANELS

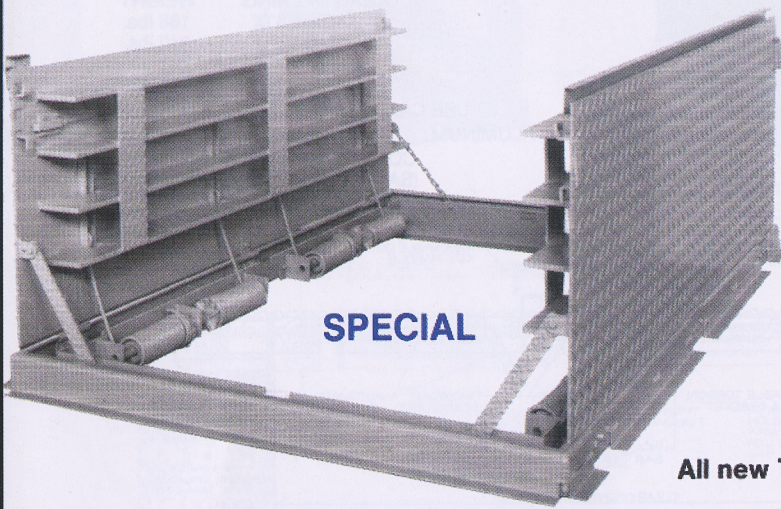


Dur-Red Products are manufactured to the highest standards of quality and design. They are specified year after year by architects and engineers and demanded by general contractors and building erectors for installation on conventional roofs or metal buildings. The curbs are designed and manufactured to adapt to base flange configurations of most metal building roof panels. The curbs are an integral component to the hatch or skylight, which is very cost effective since it eliminates the need for separate curbs. Metal building flanges are available for all Dur-Red Products models.

We Care Enough To Do Our Very Best

A new standard of performance

Traffic doors to match your needs



FLOOR DOOR
(Split-Leaf, Heavy Duty Gutter)
STAINLESS STEEL

**H-20
Wheel
Loading
Special Sizes.**

DLG

This H-20 loaded, special size floor door is constructed of #304 stainless steel. All hardware is stainless steel for high corrosive areas and is available for all floor doors.

All new Tor-Key™ Adjustable Torsion Spring.

There is a door for every requirement. Our new Torsion Spring will make your job even better. All new Torsion Spring Operator by Dur-Red Products Adjustable Chrome Vanadium Torsion Springs with trouble-free performance. The operator is maintained within the door with no hardware projection down into the well or pit to interfere with any equipment. Buildings can be equipped with a wide range of types and sizes of doors to fill every user's requirements. These include hinges and snap lock with removable handle. Door should be located where they will provide the most convenient access into the area below.

All doors are equipped with an inside safety release mechanism to prevent anyone being locked inside accidentally or otherwise. All sizes of floor doors are available in standard and special orders, the interior or exterior door to fit special opening cut into floor or cast into cement.

Dur-Red Products floor door leafs are designed to withstand uniformly distributed stationary floor loads up to 150 lbs. per square foot or H2O loads. Where carts, hand trucks, or other mobile equipment will be used, specify loads. Units are designed for use in off-street locations where not subjected to high density traffic. Oversize doors may be spliced.

**Why Settle For Less
When You Can
Get The Best!**

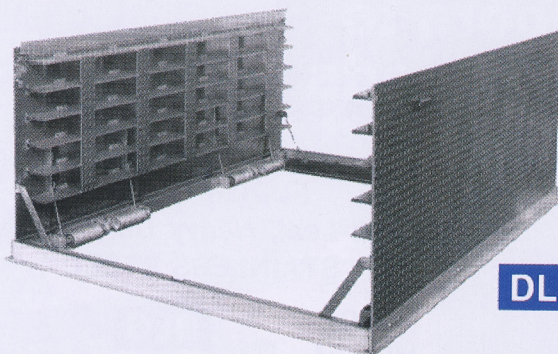


NEW!
Tor-Key™
EASE OF OPERATION

"THE BEST MADE BETTER!"

All new Tor-Key™ Adjustable Torsion Spring. Patents pending.

DUR-RED® PRODUCTS



DLG

SIDEWALK, PIT & FLOOR DOOR (Split-Leaf, Heavy Duty Gutter) EXTRUDED ALUMINUM

5'0" x 7'0" split-leaf shown

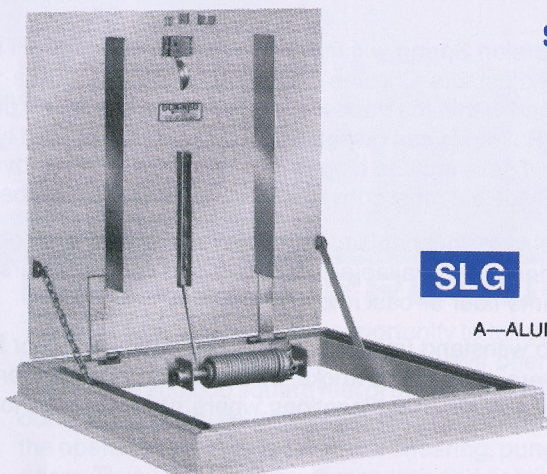
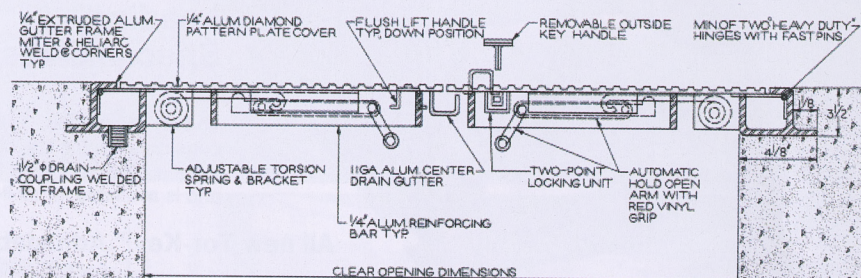
CLEAR OPENING	WEIGHT
DLG 4'0" x 4'0"	168 lbs.
DLG 4'0" x 6'0"	240 lbs.
DLG 5'0" x 5'0"	250 lbs.
DLG 5'0" x 7'0"	350 lbs.

USE CALL-OUT LETTER FOR TYPE OF METAL.

A—ALUMINUM S—STEEL G—GALVANIZED SS—STAINLESS

CONTACT US FOR CUSTOM SIZES
(SAFETY BAR ON DOUBLE DOORS)

Note: Number of springs vary per size.



SLG

SIDEWALK, PIT & FLOOR DOOR (Single-Leaf, Heavy Duty Gutter) EXTRUDED ALUMINUM

4'0" x 4'0" single leaf shown

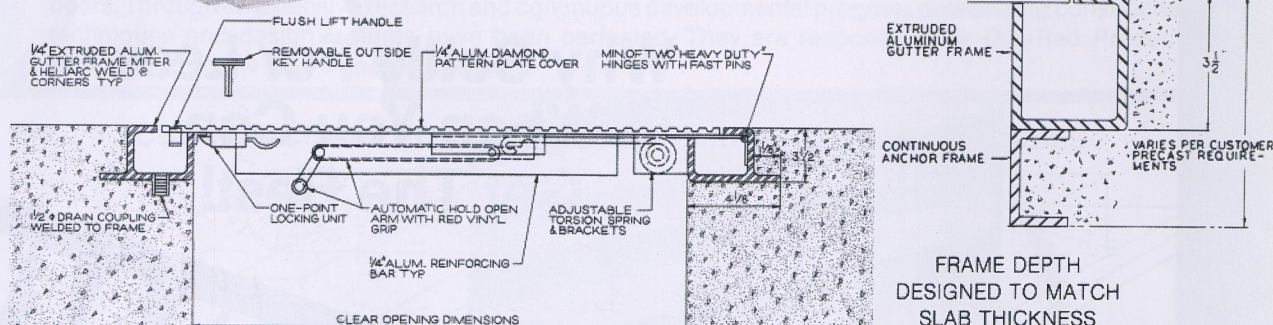
CLEAR OPENING	WEIGHT
SLG 2'0" x 2'0"	65 lbs.
SLG 2'6" x 2'6"	80 lbs.
SLG 2'6" x 3'0"	90 lbs.
SLG 3'0" x 3'0"	100 lbs.
SLG 3'6" x 3'6"	120 lbs.

USE CALL-OUT LETTER FOR TYPE OF METAL:

A—ALUMINUM S—STEEL G—GALVANIZED SS—STAINLESS

CONTACT US FOR CUSTOM SIZES

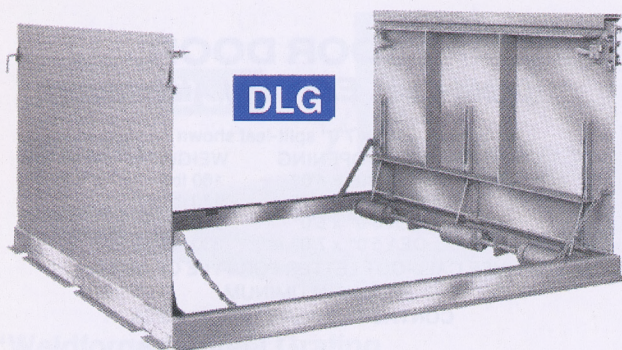
TAKE ADVANTAGE OF OUR
PRECASTING CAPABILITIES



Furnish where indicated on plans, Interior or Exterior Type SLG Type, DLG Door, Model No. _____, factory fabricated and completely assembled. Lid leaves of 1/4" diamond pattern aluminum floor plate with reinforcing bars welded to leaves, to support from 150# to H20 liveload per sq. ft. (designate required load specifications). Gutter frame shall be 1/4" extruded aluminum channel shape 3-1/2" high x 3" wide, fully welded for absolute weathertightness, with 1-1/8" continuous anchor flange, a 1-1/2" tank flange for drainage shall be welded to gutter channel located in right hand corner (or specify placement). Lid hardware shall be equipped with heavy strap hinge of 12 Ga. brass or stainless steel, has a one-point latch, inside and outside handles, "heavy-duty" adjustable chrome vanadium torsion springs and lifting bar, automatic hold-open arm with vinyl handle grip. Hardware shall be cadmium plated, and factory finish shall be mill finish or a prime coat applied to aluminum frame and leaves.

Stainless steel hardware available in high corrosive areas for all Steel Floor, Pit and Sidewalk Doors so specified.

DUR-RED® PRODUCTS



DLG

SIDEWALK, PIT & FLOOR DOOR (Split-Leaf, Heavy Duty Gutter) STEEL

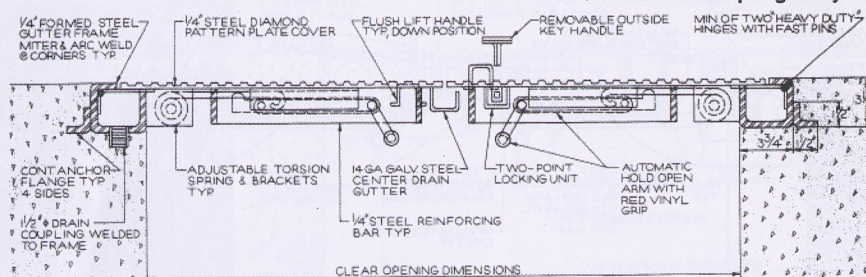
6'0" x 6'0" split-leaf shown	
CLEAR OPENING	WEIGHT
DLG 4'0" x 4'0"	450 lbs.
DLG 4'0" x 6'0"	618 lbs.
DLG 5'0" x 5'0"	645 lbs.
DLG 5'0" x 7'0"	875 lbs.

USE CALL-OUT LETTER FOR TYPE OF METAL:

S—STEEL G—GALVANIZED

CONTACT US FOR CUSTOM SIZES
(SAFETY BAR ON DOUBLE DOORS)

Note: Number of springs may vary per size.



SLG

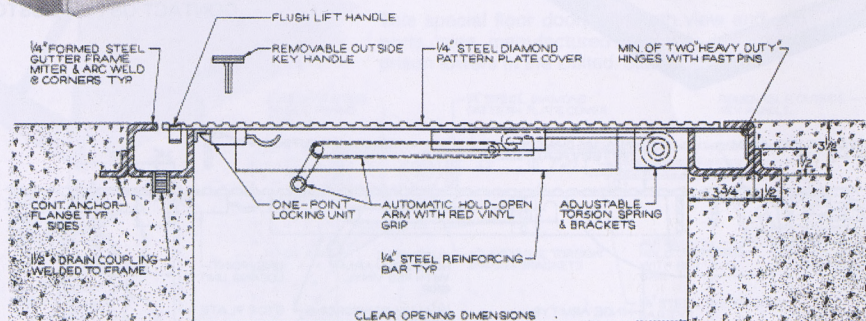
SIDEWALK, PIT & FLOOR DOOR (Single-Leaf, Heavy Duty Gutter) STEEL

3'6" x 3'6" single leaf shown	
CLEAR OPENING	WEIGHT
SLG 2'0" x 2'0"	177 lbs.
SLG 2'6" x 2'6"	235 lbs.
SLG 2'6" x 3'0"	275 lbs.
SLG 3'0" x 3'0"	300 lbs.
SLG 3'6" x 3'6"	385 lbs.

USE CALL-OUT LETTER FOR TYPE OF METAL:

S—STEEL G—GALVANIZED

CONTACT US FOR CUSTOM SIZES



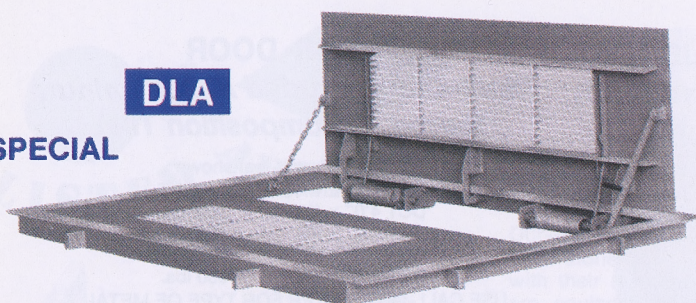
Furnish where indicated on plans, Interior or Exterior Type SLG Type, DLG Door, Model No. _____, factory fabricated and completely assembled. Door leafs of 1/4" diamond pattern steel floor plate with reinforcing bars welded to leafs, to support from 150# to H2O liveload per sq. ft. (designate required load specifications). Gutter frame shall be 1/4" carbon steel channel power brake shape 3-1/2" high x 3" wide, fully welded and ground smooth for absolute weathertightness, with 1-1/2" continuous anchor flange, a 1-1/2" tank flange for drainage shall be welded to gutter channel located in right hand corner (or specify placement). Lid hardware shall be equipped with heavy strap hinge of 12 Ga. steel or stainless steel, has a one-point latch, inside and outside handles, "heavy-duty" adjustable chrome vanadium torsion springs and lifting bar, automatic hold-open arm with vinyl handle grip. Hardware shall be cadmium plated, and factory finish shall be prime coat of primer applied to steel frame and leafs, or available in hot dipped galvanize after fabrication when so specified.

Stainless steel hardware available in high corrosive areas for all Steel Floor, Pit and Sidewalk Doors so specified.

DUR-RED® PRODUCTS

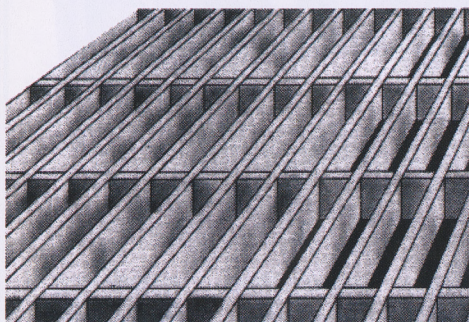
SPECIAL

DLA



"Weldforged" Steel Grating

Mechanical Interlocking Joints Provide the Maximum Passage of Heat, Light and Air.



"The Best Made Better!"

SPECIAL

SLA



Furnish where indicated on plans, Dur-Red Products Floor Door Model No. _____, factory fabricated 3" x 1/4" rolled steel angle frame, completely welded and ground smooth with 3/4" x 3/4" x 3/16" angle stop to set door flush with angle frame; and flat steel anchors 18" o.c. welded to outside of frame to insure stability. Lid leaves of 1/4" diamond pattern steel floor plate with reinforcing bars welded to leaves. Door hardware shall be equipped with heavy stamped hinges 3/16" steel bolted to angle frame and leaf, heavy-duty adjustable chrome vanadium torsion spring and lifting bar, automatic hold-open arm with handle allowing door leaves to open 90° and spring lock with removable handles. Hardware shall be cadmium plated and factory finish shall be prime coat of primer applied to steel frame and leaves. Available, when so specified, in Hot-Dipped Galvanize after fabrication.

Stainless steel hardware available in high corrosive areas for all Steel Floor, Pit and Sidewalk Doors so specified.

GRATING FLOOR DOOR (Split-Leaf, Heavy Duty Angle) Extruded Aluminum or Steel

5'0" x 7'0" split-leaf shown

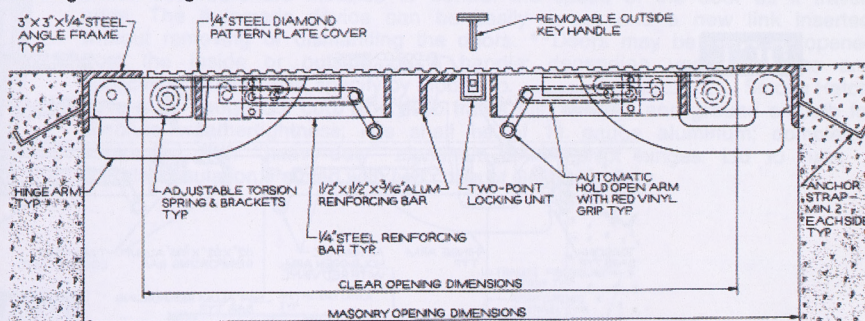
CLEAR OPENING	WEIGHT
DLA 4'0" x 4'0"	368 lbs.
DLA 4'0" x 6'0"	415 lbs.
DLA 5'0" x 5'0"	575 lbs.
DLA 5'0" x 7'0"	800 lbs.

USE CALL-OUT LETTER FOR TYPE OF METAL:

S—STEEL G—GALVANIZED

CONTACT US FOR CUSTOM SIZES

Note: Number of springs vary per size.



FLOOR DOOR (Single-Leaf, Heavy Duty Angle) Extruded Aluminum or Steel

3'6" x 3'6" single leaf shown

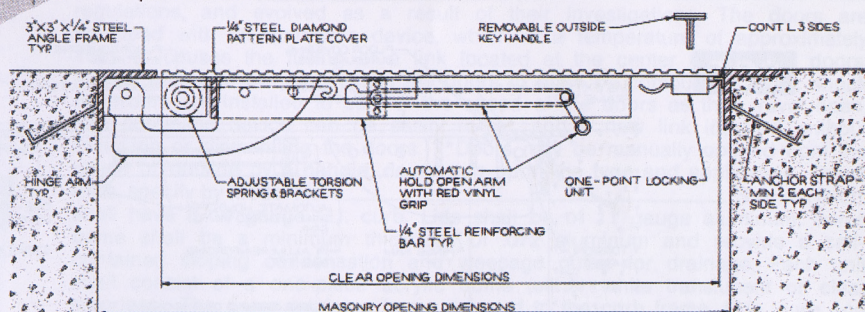
CLEAR OPENING	WEIGHT
SLA 2'0" x 2'0"	115 lbs.
SLA 2'6" x 2'6"	165 lbs.
SLA 2'6" x 3'0"	190 lbs.
SLA 3'0" x 3'0"	220 lbs.
SLA 3'6" x 3'6"	330 lbs.

USE CALL-OUT LETTER FOR TYPE OF METAL:

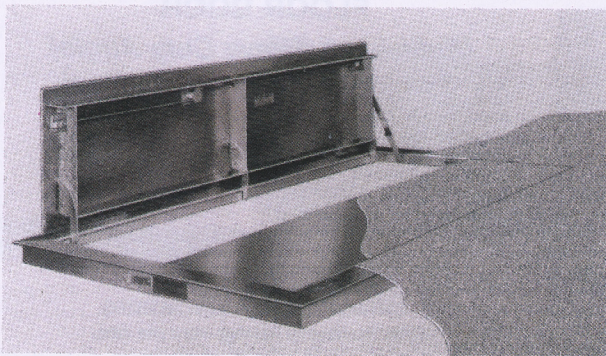
S—STEEL G—GALVANIZED

CONTACT US FOR CUSTOM SIZES

This special floor door, with both view and gun ports, was manufactured specially for use in prison towers in the United States.



DUR-RED® PRODUCTS



FLOOR DOOR (Split-Leaf, Extruded Aluminum for Carpet or Composition Tile)

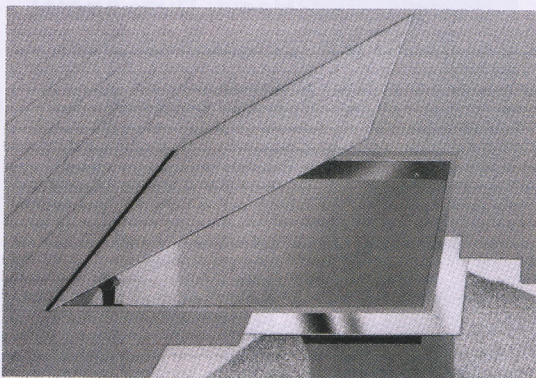
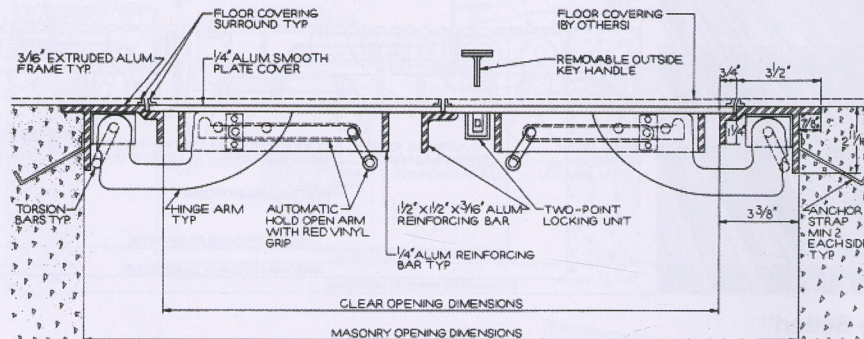
5'8" x 8'0" split-leaf shown	
CLEAR OPENING	WEIGHT
DCT 4'0" x 4'0"	160 lbs.
DCT 4'0" x 6'0"	180 lbs.
DCT 5'0" x 5'0"	240 lbs.
DCT 5'0" x 7'0"	330 lbs.

USE CALL-OUT LETTER FOR TYPE OF METAL:

A—ALUMINUM

CONTACT US FOR CUSTOM SIZES

DCT



FLOOR DOOR (Single-Leaf, Extruded Aluminum for Carpet or Composition Tile)

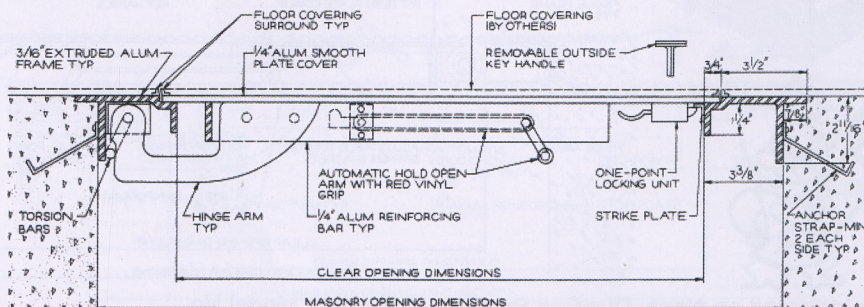
4'0" x 4'0" single leaf shown	
CLEAR OPENING	WEIGHT
SCT 2'0" x 2'0"	60 lbs.
SCT 2'6" x 2'6"	75 lbs.
SCT 2'6" x 3'0"	88 lbs.
SCT 3'0" x 3'0"	100 lbs.
SCT 3'6" x 3'6"	135 lbs.

USE CALL-OUT LETTER FOR TYPE OF METAL:

A—ALUMINUM

CONTACT US FOR CUSTOM SIZES

SCT



Furnish where indicated on plans, Interior or Exterior Type DCT Type, SCT Door, Model No. _____, factory fabricated and completely assembled. Door set up for floor tile or carpet with a metal surround 1/8" or 3/16" plate on frame and leaf. Door leaves of 1/4" flat aluminum floor plate with reinforcing bars welded to leaves, to support from 150# per sq. ft. Frame shall be 1/4" extruded aluminum shape, fully welded, with 1-1/8" anchor strap bolted to frame. Leaf hardware shall be equipped with heavy stamped 1/4" aluminum hinge bolted to frame and leaf, torsion bars for easy operation, have a one-point latch, inside and outside handles, automatic hold-open arm with vinyl handle grip. Hardware shall be cadmium plated, and factory finish shall be mill finish or a prime coat applied to aluminum frame and leaves.

Stainless steel hardware available in high corrosive areas for all Steel Floor, Pit and Sidewalk Doors so specified.

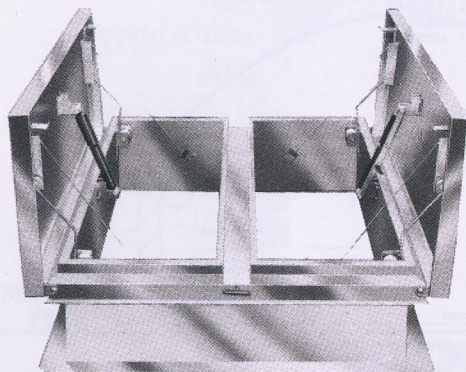
DUR-RED® PRODUCTS



DOUBLE DOOR SMOKE HATCH (Underwriter's Laboratory & Factory Mutual Research Corp.)

SPECIFICATIONS:

Dur-Red Products Smoke Hatches have been tested and approved by Underwriters Laboratories, Inc., and Factory Mutual Research Corp., made in accordance with their regulations, and evolved as a result of their investigations. The doors are equipped with an automatic device, which at a temperature of approximately 165° F. causes the fusing of a link located at the center of the two doors; torsion spring drives then cause the doors to open by compulsory force; shock absorbers are installed to control the speed of the door as it travels open. The automatic device can be easily re-set, and a new link inserted, without removing or dismantling the doors. **Doors may be manually opened from the inside or outside by a handle; depending upon the type and application. These units, specify by Model No. _____ Smoke Hatch, have a 14 gauge G.I. curb and curb frame fully welded and ground smooth for absolute weathertightness; lids shall be of 11 gauge aluminum; completely assembled with "heavy-duty" aluminum 3/16" pivot hinges. Lid to have a fiberglass insulation. Painted with two coats of G66S13 primer.



UFSH

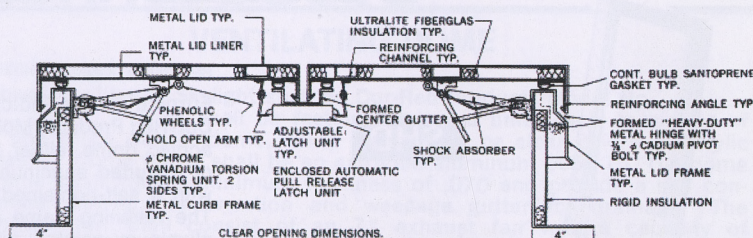
CLEAR OPENING
UFSH 48" x 48"
UFSH 48" x 72"
UFSH 48" x 90"
UFSH 48" x 96"

FMSH

CLEAR OPENING
FMSH 48" x 48"
FMSH 48" x 72"
FMSH 48" x 90"
FMSH 48" x 96"

FMSH

CLEAR OPENING
FMSH 60" x 60"
FMSH 60" x 96"
FMSH 60" x 120"
FMSH 60" x 144"
FMSH 66" x 144"
FMSH 72" x 72"

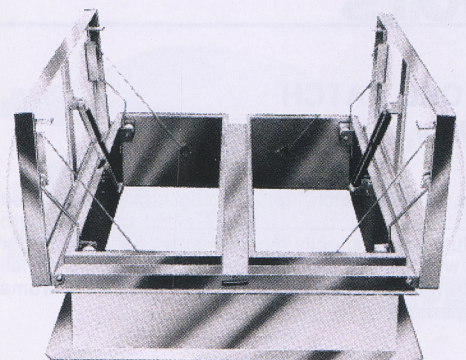


DUR-RED® PRODUCTS

DOUBLE DOOR DOMED SMOKE HATCH (Factory Mutual Research Corp.)

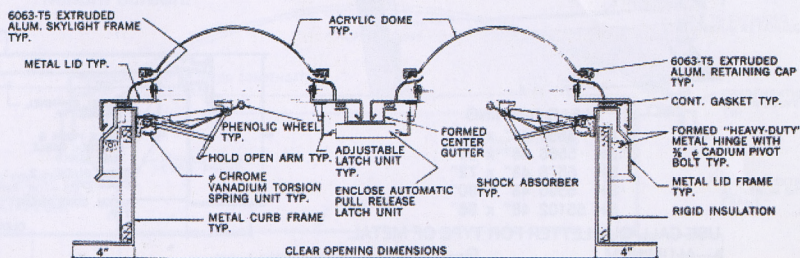
SPECIFICATIONS:

Dur-Red Products double door Domed Smoke Hatches have been tested and approved by Factory Mutual Research Corp., made in accordance with their regulations, and evolved as a result of their investigations. The doors are equipped with an automatic device, which at a temperature of approximately 165° F. causes the fusing of a link located at the center of the two doors; torsion spring drives then cause the doors to open by compulsory force; shock absorbers are installed to control the speed of the doors as they travel open. The automatic device can be easily re-set, and a new link inserted, without removing or dismantling the doors. **Doors may be manually opened from the inside or outside by a handle; depending upon the type and application. These units, specify by Model No. _____ Smoke Hatch, shall have a 14 gauge G.I. curb. Lids shall be of 11 gauge aluminum; dome frame shall be a minimum thickness of .072 aluminum and provide a self-contained sloping condensation and weepage gutter for drainage. Each unit shall consist of a one-piece acrylic dome (either white translucent or clear colorless). The dome retaining frame secured to the curb frame. Lids, curb and dome frame are fully welded and ground smooth for absolute weathertightness; completely assembled with "heavy-duty" aluminum 3/16" pivot hinges. Painted with two coats of G66S13 primer.



FMSHD

CLEAR OPENING
FMSHD 48" x 48"
FMSHD 48" x 72"
FMSHD 48" x 90"
FMSHD 48" x 96"
FMSHD 60" x 60"
FMSHD 60" x 96"
FMSHD 72" x 72"



VSHD



NOTE: Number of springs vary per size

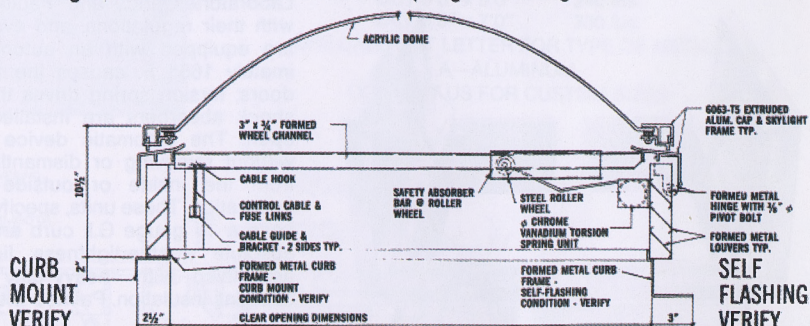
		I.D. CLEAR OPENING	LOUVER HEIGHT	LOUVER WIDTH
VSHD	5555	48" x 48"	9"	2"
VSHD	5566	48" x 60"	9"	2"
VSHD	5578	48" x 72"	9"	2"
VSHD	5596	48" x 90"	9"	2"
VSHD	55102	48" x 96"	9"	2"

USE CALL-OUT LETTER FOR TYPE OF METAL:
A—ALUMINUM G—GALVANIZED
CONTACT US FOR CUSTOM SIZES

SMOKE HATCH DOME (Gravity Ventilator, Curb Mounted)

SPECIFICATIONS:

Furnish where indicated on plans, Smoke Hatch Dome Gravity Ventilator, factory fabricated, Dur-Red Products Model No. _____, consisting of a one piece acrylic dome, either white translucent or clear colorless; and a dome frame of extruded aluminum #6063-T5, with a minimum thickness of .070 provided with a self-contained sloping condensation and weepage gutter for drainage. The retaining frame and curb frame shall be fabricated from steel or aluminum, and louvre blades shall be aluminum or G.I. steel; painted with two coats of acrylic paint. Lid hardware shall consist of safety stops; "heavy-duty" 3/16" aluminum pivot hinges; and chrome vanadium torsion springs and lifting arms.

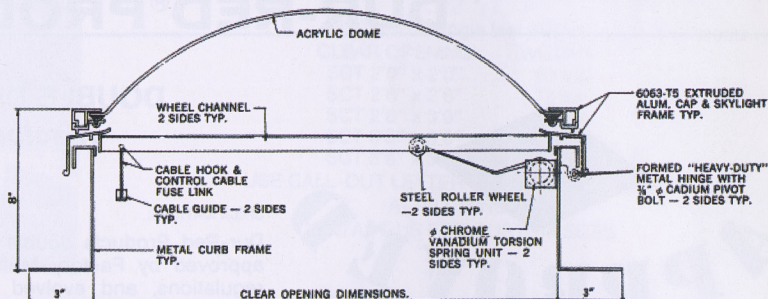


DUR-RED® PRODUCTS

SMOKE HATCH DOME

SPECIFICATIONS:

Furnish where indicated on plans Smoke Hatch Dome, factory fabricated Dur-Red Products Model No. _____, consisting of a one piece acrylic dome, either white translucent or clear colorless; and a dome frame of extruded aluminum #6063-T5, with a minimum thickness of .070, provided with a self-contained sloping condensation and weepage gutter for drainage. The retaining frame and curb frame shall be fabricated from either steel or aluminum; painted with two coats of acrylic paint. Lid hardware shall consist of safety stops; "heavy-duty" 3/16" aluminum pivot hinges; and chrome vanadium torsion springs and lifting arms.



SHD



CLEAR OPENING

SHD	5555	48" x 48"
SHD	5566	48" x 60"
SHD	5578	48" x 72"
SHD	5596	48" x 90"
SHD	55102	48" x 96"

USE CALL-OUT LETTER FOR TYPE OF METAL:
A—ALUMINUM G—GALVANIZED
CONTACT US FOR CUSTOM SIZES

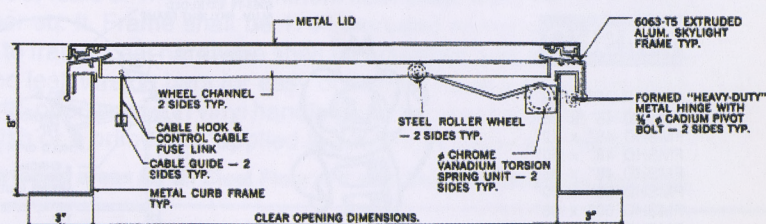
DUR-RED® PRODUCTS

SMOKE HATCH

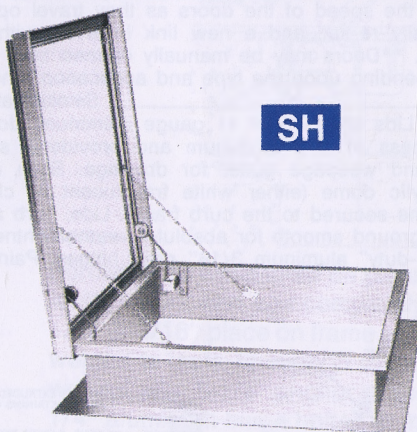
(Single Door, Self-Flashing)

SPECIFICATIONS:

Furnish where indicated on plans, Smoke Hatch, self-flashing factory fabricated Dur-Red Products Model No. _____. Lid, curb and curb frame shall be of either *steel or aluminum (*specify requirements), fully welded for absolute weathertightness; painted with two coats of acrylic paint. Lid hardware shall consist of a safety cable; "heavy-duty" 3/16" aluminum pivot hinges; and chrome vanadium torsion springs and lifting arms.



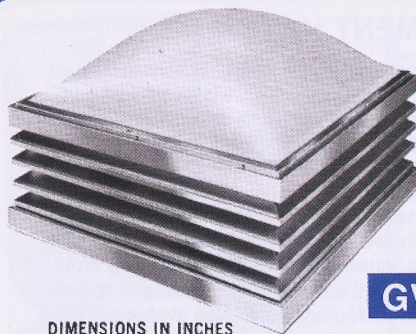
SH



CLEAR OPENING

SH	5555	48" x 48"
SH	5566	48" x 60"
SH	5578	48" x 72"
SH	5596	48" x 90"
SH	55102	48" x 96"

USE CALL-OUT LETTER FOR TYPE OF METAL:
A—ALUMINUM G—GALVANIZED
CONTACT US FOR CUSTOM SIZES



GVC

DIMENSIONS IN INCHES

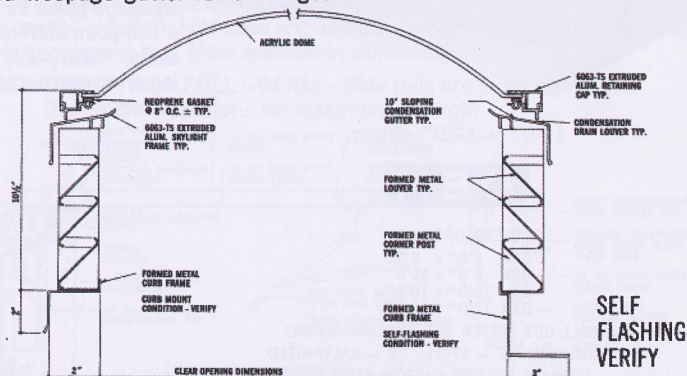
MODEL	CURB OPENING
GVC2424	19 x 19
GVC3636	30 1/4 x 30 1/4
GVC4242	37 x 37
GVC5252	46 1/4 x 46 1/4
GVC6060	55 x 55
GVC8080	75 x 75
GVC2028	14 1/4 x 22 1/4
GVC2052	14 1/4 x 46 1/4
GVC3296	25 1/2 x 89 1/2
GVC3652	30 1/4 x 46 1/4
GVC4280	37 x 75
GVC4364	38 x 59
GVC5296	46 1/4 x 89 1/2

Specify Curb Mounted or Self-Flashing

SPECIFICATIONS:

Gravity Ventilator and Skylight Combination shall be Model No. _____ as manufactured by Dur-Red Products. They shall be factory fabricated units consisting of a fixed louver blade. The blade, base, and corner post, shall have a 20 gauge G.I. louver blade that is continuous. The gravity ventilator shall consist of a one-piece acrylic dome; white translucent or clear colorless acrylic. Dome frame shall be an extruded aluminum 6063-T5. Frame minimum thickness of .070 and provide a self-contained sloping condensation and weepage gutter for drainage.

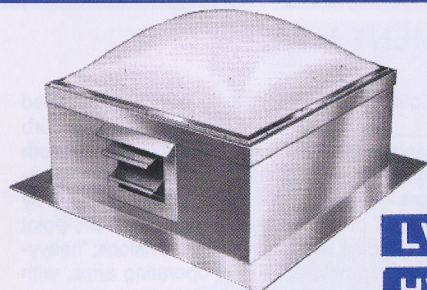
**CURB
MOUNT
VERIFY**



**SELF
FLASHING
VERIFY**

DUR-RED® PRODUCTS

VENTILATING DOME



**LV
HV**

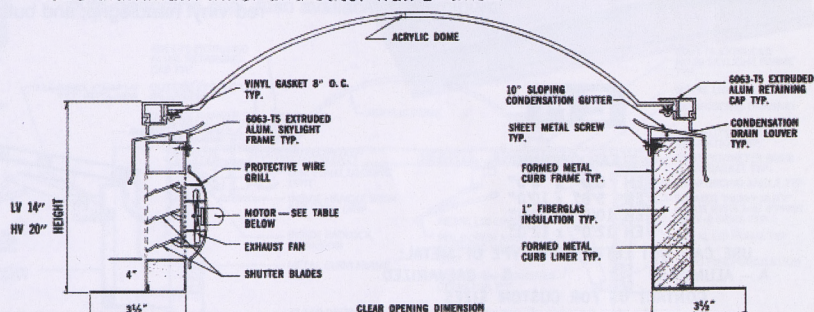
DIMENSIONS IN INCHES

MODEL	MODEL	CURB OPENING
LV3636	HV3636	30 1/4 x 30 1/4
LV4242	HV4242	37 x 37
LV5252	HV5252	46 1/4 x 46 1/4
LV2052	HV2052	14 1/4 x 46 1/4
LV2852	HV2852	22 1/4 x 46 1/4
LV3296	HV3296	25 1/2 x 89 1/2
LV3652	HV3652	30 1/4 x 46 1/4
LV3676	HV3676	30 1/4 x 69 1/2

DUTY	VOLT	FAN	CFM	RPM	HEIGHT
LIGHT	110 V. 60 CY.	7"	135	1500	14"
HEAVY	110 V. 60 CY.	12"	650	1500	20"

SPECIFICATIONS:

Power Ventilating Skylight shall be Dur-Red Products Model No. _____. They shall be factory fabricated units each consisting of a one piece acrylic dome, white translucent or clear colorless acrylic plastic. Dome frame shall be an extruded aluminum 6063-T5. The dome frame shall have a minimum thickness of .070 and provide a self contained sloping condensation and weepage gutter for drainage. The shutter fan shall consist of an 7" exhaust fan with a capacity of L-V 135 CFM or HV 650 CFM with 12" shutter louver fan with weather sealing blades. The insulated curb shall be fiberglass insulated with .025 aluminum inner and outer wall 1" thick.



SKYLIGHT DOMES

AIR VENT DOME



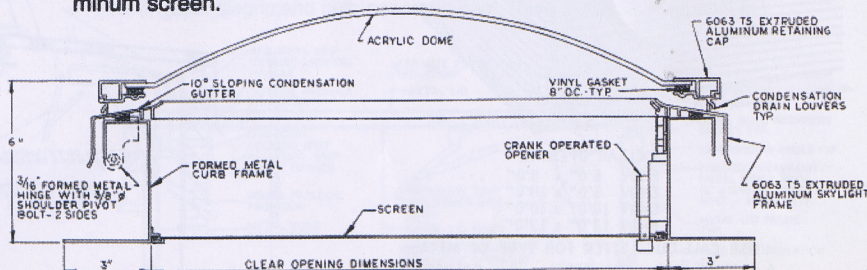
AV

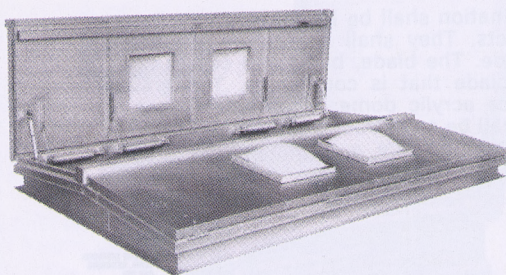
DIMENSIONS IN INCHES

MODEL	CURB OPENING
AV3636	30 1/4 x 30 1/4
AV5252	46 1/4 x 46 1/4
AV2052	14 1/4 x 46 1/4
AV3296	25 1/2 x 89 1/2
AV3652	30 1/4 x 46 1/4
AV3676	30 1/4 x 69 1/2
AV2852	22 1/4 x 46 1/4

SPECIFICATIONS:

Plastic Air Vent Dome shall be Dur-Red Products Model No. _____. They shall be factory fabricated units each consisting of a one piece acrylic dome, white translucent or clear colorless acrylic. Dome frame shall be an extruded aluminum 6063-T5. The dome frame shall be minimum thickness of .070 and provide a self contained sloping condensation and weepage gutter for drainage. The retaining frame secured to the curb frame. The curb shall be fabricated from aluminum or steel with a 3" mounting flange and be complete with manual crank operated adjustable lifting arrangement. Each unit shall have a removable aluminum screen.





12'0" x 12'0" shown

DEH

CLEAR OPENING

DEH 6'0" x 8'0"

DEH 6'0" x 10'0"

DEH 10'0" x 10'0"

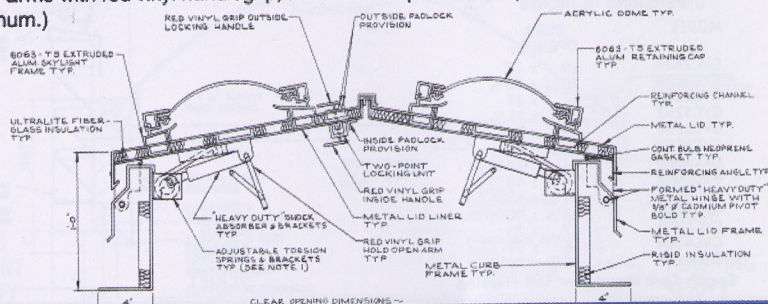
DEH 12'0" x 12'0"

USE CALL-OUT LETTER FOR TYPE OF METAL:
A - ALUMINUM S - STEEL G - GALVANIZED
CONTACT US FOR CUSTOM SIZES

DOMES EQUIPMENT HATCH

SPECIFICATIONS:

Furnish where indicated on plans, Dome Equipment Hatch, factory fabricated Dur-Red Products, Model No. _____, with a 12" high curb, Curb and curb frame shall be 14 ga. galvanized iron, fully welded and ground smooth for absolute weathertightness; completely assembled with "heavy-duty" galvanized hinges; lid to have a one piece acrylic dome, either white translucent or clear colorless; and a dome frame of extruded aluminum #6063-T5, with a minimum thickness of .070, provided with a self-contained sloping condensation and weepage gutter for drainage; painted with two coats of primer. Lid hardware has a two-point universal spring latch; inside, outside handle with padlocking provisions; "heavy-duty" Adjustable Torsion Spring; automatic hold-open and operating arms with red vinyl handle; and bulb-neoprene seal. (Also available in aluminum.)



All new Tor-Key™ Adjustable Torsion Spring.



EH

CLEAR OPENING

EH 6'0" x 8'0"

EH 5'0" x 10'0"

EH 10'0" x 10'0"

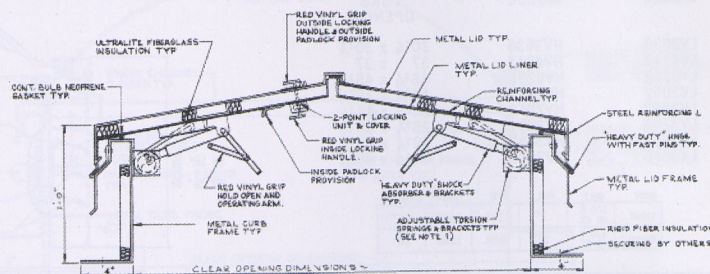
EH 12'0" x 12'0"

USE CALL-OUT LETTER FOR TYPE OF METAL:
A - ALUMINUM G - GALVANIZED
CONTACT US FOR CUSTOM SIZES
Oversize doors may be spliced

EQUIPMENT HATCH

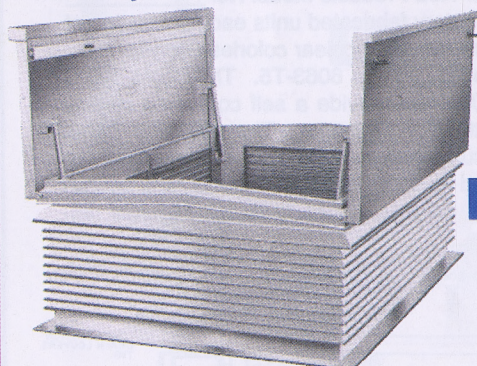
SPECIFICATIONS:

Furnish where indicated on plans, Equipment Hatch, factory fabricated Dur-Red Products, Model No. _____, with a 12" high curb. Lids, curb and curb frame shall be 14 ga. galvanized iron, fully welded and ground smooth for absolute weathertightness; completely assembled with "heavy-duty" galvanized hinges; lid to have a 1" fiberglass typical four sides, fiberglass protected by metal corners; painted with two coats of primer. Lid hardware has a two-point universal spring latch; inside, outside handles with padlocking provisions; "heavy-duty" Adjustable Torsion Spring; automatic hold-open and operating arms, with red vinyl handle; and bulb-neoprene seal. (Also available in aluminum.)



DUR-RED® PRODUCTS

EQUIPMENT HATCH Gravity Ventilator Combination



EHGV

CLEAR OPENING

EHGV 6'0" x 8'0"

EHGV 5'0" x 10'0"

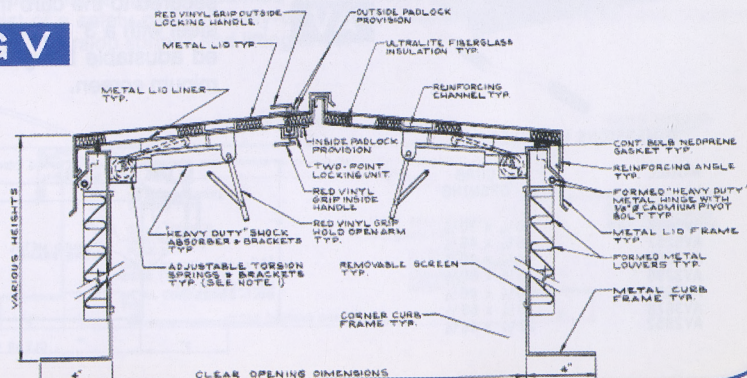
EHGV 10'0" x 10'0"

EHGV 12'0" x 12'0"

USE CALL-OUT LETTER FOR TYPE OF METAL:
A - ALUMINUM S - STEEL G - GALVANIZED
CONTACT US FOR CUSTOM SIZES

SPECIFICATIONS:

Equipment Hatch/Gravity Ventilator Combination shall be factory fabricated Dur-Red Products, Model No. _____, consisting of a fixed louver blade. The blade, base and corner post shall have minimum thickness of .072 aluminum #3003H-14; louver blade shall be continuous. The lid to have a 1" #750 fiberglass insulation, protected by a 22 gauge lid liner. Lid hardware consists of a two-point universal spring latch; inside, outside handle with padlocking provisions; "heavy-duty" Adjustable Torsion Spring; automatic hold-open and operating arms, with red vinyl handle; and bulb-neoprene seal. (Also available in aluminum.)





LH

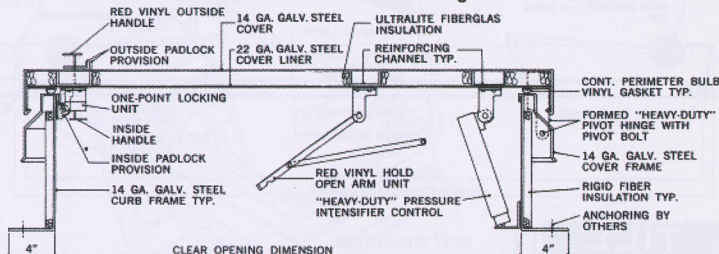


CLEAR OPENING
LH 2'0" x 2'0"
LH 2'6" x 2'6"
LH 2'6" x 3'0"
LH 3'0" x 3'0"

USE CALL-OUT LETTER FOR TYPE OF METAL:
A—ALUMINUM G—GALVANIZED
CONTACT US FOR CUSTOM SIZES



ALUMINUM LADDER INDUSTRIAL FULL I-BEAM – Side rails are extra heavy duty 3" I-beam extrusions for maximum strength.

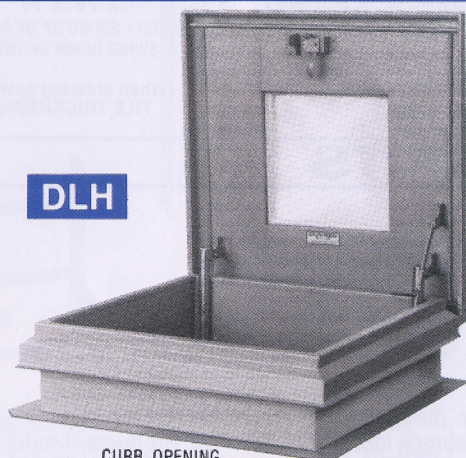


LADDER HATCH

SPECIFICATIONS:

Furnish where indicated on plans, Ladder Hatch, factory fabricated, Dur-Red Products Model No. _____, curb and curb frame and lid shall be 14 gauge galvanized steel, fully welded and ground smooth for absolute weathertightness; completely assembled with "heavy-duty" 3/16" galvanized pivot hinges; lid to have a fiberglass insulation, protected by a 22 gauge lid liner; inside, outside handles with padlocking provisions; "heavy-duty" air-flow pressure intensifier control; automatic hold-open and operating arms, with red vinyl handle grip; and bulb-neoprene seal. (Also available in aluminum.)

DUR-RED® PRODUCTS



DLH

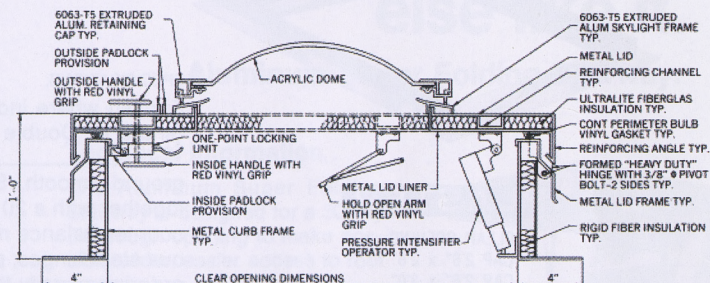
CURB OPENING
DLH 2'0" x 2'0"
DLH 2'6" x 2'6"
DLH 2'6" x 3'0"
DLH 3'0" x 3'0"

USE CALL-OUT LETTER FOR TYPE OF METAL:
A—ALUMINUM G—GALVANIZED
CONTACT US FOR CUSTOM SIZES

SPECIFICATIONS:

DOMES LADDER HATCH

Dome Ladder Hatch shall be Dur-Red Products Model No. _____, Curb and curb frame and lid shall be 14 gauge galvanized steel fully welded and ground smooth for absolute weathertightness. Dome frame shall have a one-piece acrylic dome with either white translucent or clear colorless and a dome frame of extruded aluminum, completely assembled with heavy-duty 3/16" galvanized pivot hinges, lid to have a fiberglass insulation protected by a 22 gauge lid liner painted with two coats of primer. Lid hardware has a one-point spring latch, inside/outside handles with padlocking provisions, "heavy-duty" air flow pressure intensifier control; automatic hold-open and operating arms, with red vinyl handle grip; and bulb-neoprene seal. Also available in aluminum.



DUR-RED® PRODUCTS



NSH

SSH

Steep Hatch Shown

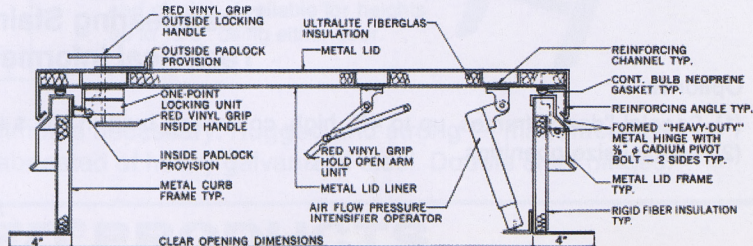
CLEAR OPENING
SSH 2'6" x 4'0"
SSH 2'6" x 4'6"
SSH 4'0" x 4'0"
CLEAR OPENING
NSH 2'6" x 6'0"
NSH 2'6" x 8'0"
NSH 3'0" x 6'0"
NSH 3'0" x 8'0"

USE CALL-OUT LETTER FOR TYPE OF METAL:
A—ALUMINUM G—GALVANIZED
CONTACT US FOR CUSTOM SIZES

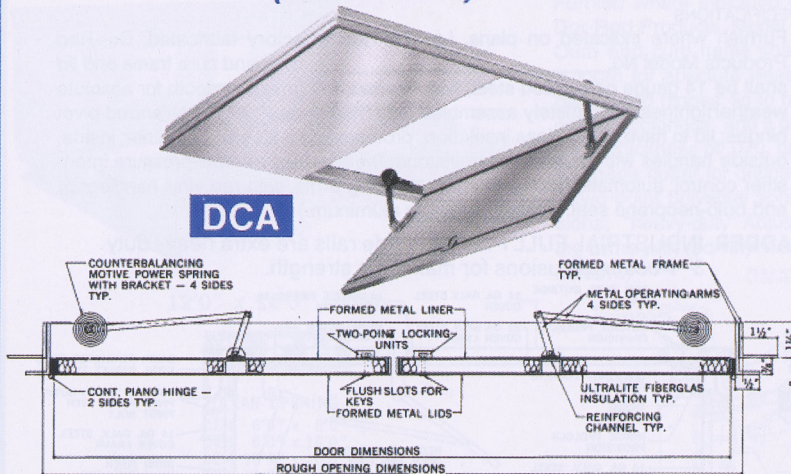
STAIR HATCH (Steep) (Normal)

SPECIFICATIONS:

Furnish where indicated on plans, Stair Hatch, factory fabricated Dur-Red Products, Model No. _____, curb and curb frame and lid shall be 14 gauge galvanized steel, fully welded and ground smooth for absolute weathertightness; completely assembled with "heavy-duty" galvanized 3/16" pivot hinges; lid to have a #750 fiberglass insulation, protected by a 22 gauge door liner; painted with two coats of primer. Lid hardware has a two-point spring latch; inside, outside handles with padlocking provisions; "heavy-duty" air-flow pressure intensifier control; automatic hold-open and operating arms, with red vinyl handle grip; and bulb-neoprene seal. (Also available in aluminum.)

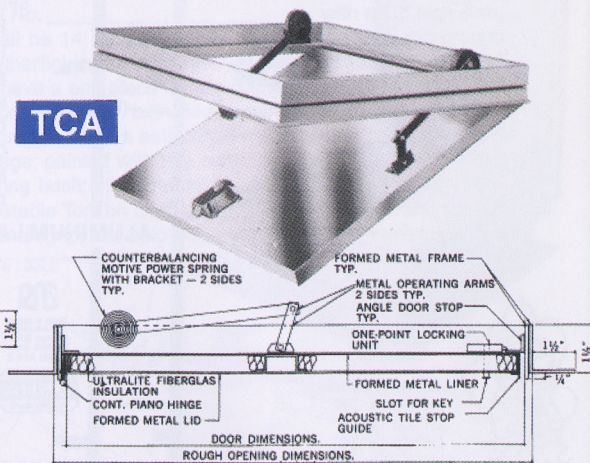


CEILING ACCESS (Double-Door)



DCA

CEILING ACCESS (Single-Door)



TCA

TILE

CLEAR OPENING
DCA 3'0" x 4'0"
DCA 4'0" x 5'0"
DCA 5'0" x 5'0"
DCA 5'0" x 6'0"
SPECIFY SWING UP OR DOWN
SWING DOWN SHOWN
(When ordering specify
TILE THICKNESS)

SPECIFICATIONS:

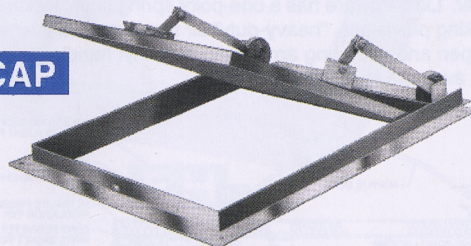
Furnish where indicated on plans, single door Ceiling Access, factory fabricated Dur-Red Products, Model No. _____, consisting of a 14 gauge steel outer frame, fully welded and ground smooth. Solid core door constructed of 1" rigid fiberglass board with a 20 gauge steel outer shell. Door hardware to be heavy-duty, counter-balance motive power springs, flush mounted slot latch and continuous steel hinges; prime painted with two coats of gray primer. **Note: when ordering specify thickness of acoustical tile and "swing-up" or "swing-down" door requirements.

TILE

CLEAR OPENING
TCA 2'6" x 2'6"
TCA 2'6" x 3'0"
SPECIFY SWING UP OR DOWN
SWING DOWN SHOWN
(When ordering specify
TILE THICKNESS)

DUR-RED® PRODUCTS

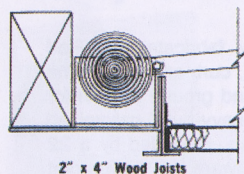
CAP



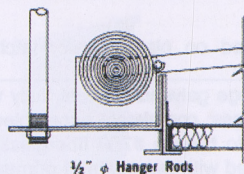
PLASTER

CLEAR OPENING
CAP 2'6" x 2'6"
CAP 2'6" x 3'0"
SPECIFY SWING UP OR DOWN
SWING UP SHOWN
(When ordering specify
TILE THICKNESS)

TYPES OF CEILING CONDITIONS



2" x 4" Wood Joists

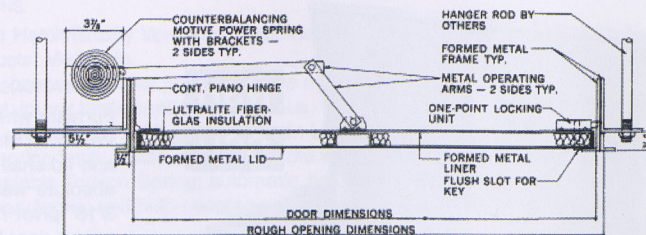


1/2" ϕ Hanger Rods

CEILING ACCESS (Single-Door)

SPECIFICATIONS:

Furnish where indicated on plans, Ceiling Access for Plaster (specify either Single or Double Door), factory fabricated Dur-Red Products, Model No. _____, consisting of a 12 gauge angle frame fully welded and ground smooth. Solid core door hardboard fiberglass, completely bonded together with a 20 gauge steel outer shell. Door hardware to be "heavy-duty" counter-balance motive power springs, flush mounted slot latch and continuous steel hinges; prime painted with two coats of gray primer. **Note: when ordering specify thickness of plaster and "swing-up" or "swing-down" door requirements.



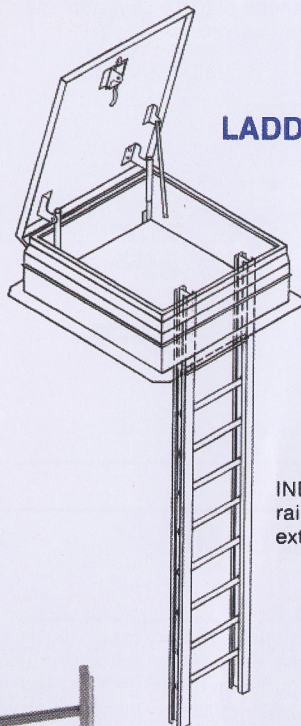
Disappearing Stairway Technical Information

Optional:

- (1) Special "deep" frames, up to 48" high, containing built-in steps and handrail, for use with dropped ceilings.
- (2) Special size openings.

SEE PAGE 15 FOR ADDITIONAL INFORMATION

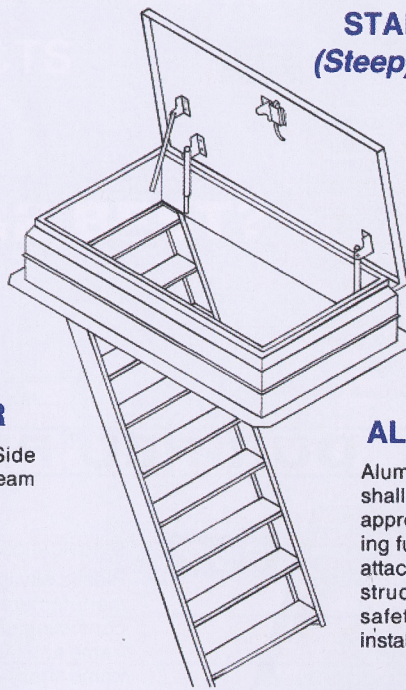
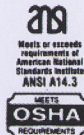
When Quality Really Counts



LADDER HATCH

ALUMINUM LADDER

INDUSTRIAL FULL I-BEAM — Side rails are extra heavy duty 3" I-beam extrusions for maximum strength.



STAIR HATCH
(Steep) (Normal)

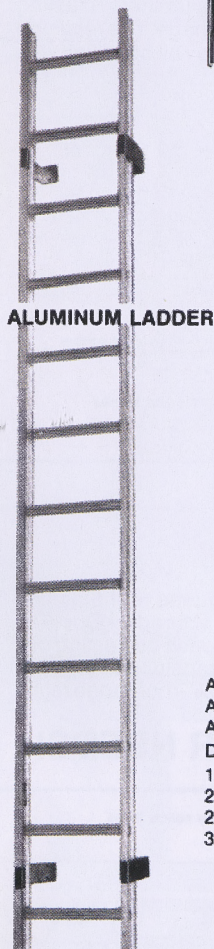
FIXED ALUMINUM LADDER

Aluminum ships ladder fixed 63°, shall be detailed and submitted for approval prior to fabrication showing full dimensions, wall and floor attachments, materials and construction must comply with all safety orders pertinent to the installation.

Disappearing Stairway

There's nothing else like it.

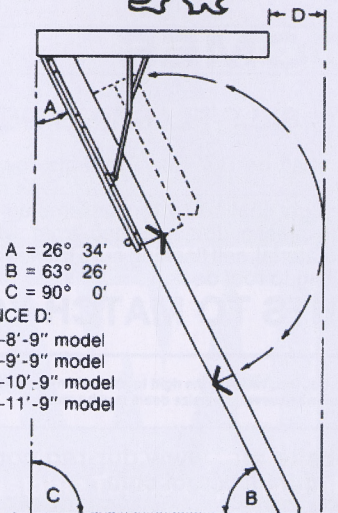
Aluminum Super Folding Stairway.



ALUMINUM LADDER



ANGLE A = 26° 34'
ANGLE B = 63° 26'
ANGLE C = 90° 0'
DISTANCE D:
11 7/8" — 8'-9" model
20 1/2" — 9'-9" model
20 1/2" — 10'-9" model
30" — 11'-9" model

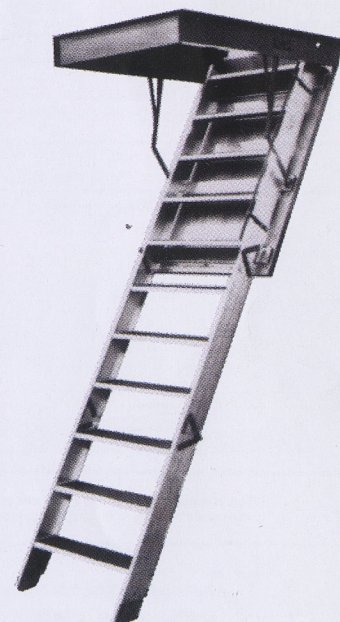


Technical Information

The Aluminum Super Folding Stairway is designed for a 30" by 54" rough opening to make possible wider, easier access to roof areas.

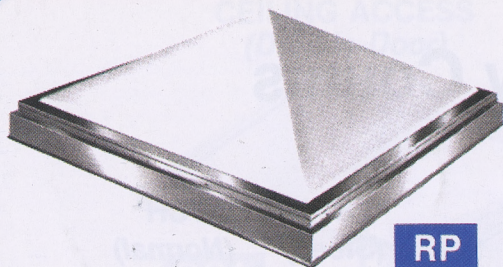
Where 16 O.C. ceiling joists are used, simply cut one joist and put in headers.

Piano-hinged in its own steel frame for a 30" x 54" rough opening up to 10'0" and 30" x 64" for over 10'0" finished ceiling heights. Height of the 1/8" steel box frame is 5" when using aluminum door panel. Non-skid covered treads have risers of 9 1/2". Unit is 500 lb. tested. Steel handrail on door-panel section. Stairway is operated via operating pole (included) with hook on one end to engage "eye" on the underside of the door panel for both opening and closing. Available for heights up to 12'0" using either door.



Simple and easy to operate — no adjustments necessary. Rugged and strong — manufactured of highest quality materials. All hardware fabricated of heavy galvanized steel. Double steel hinges.

DUR-RED® PRODUCTS



RP

DIMENSIONS IN INCHES
MODEL CURB
OPENING

RP2424	19 x 19
RP2828	22 1/4 x 22 1/4
RP3636	30 1/4 x 30 1/4
RP4242	37 x 37
RP5252	46 1/4 x 46 1/4
RP6060	55 x 55
RP8080	75 x 75
RP3652	30 1/4 x 46 1/4
RP3676	30 1/4 x 69 1/2

NOTE: Double Dome Model RPDD
Specify Single or Double Dome Clear Over White

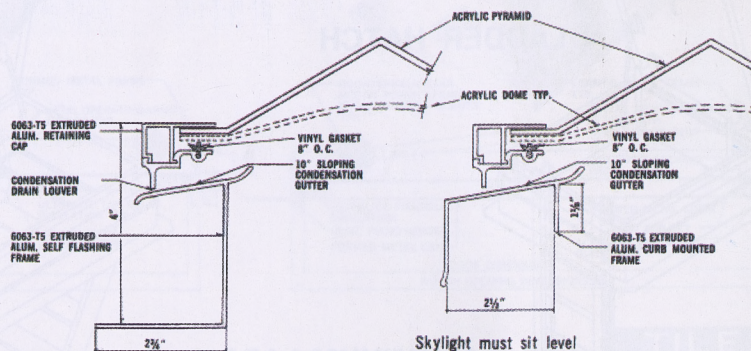
PYRAMID

SPECIFICATIONS:

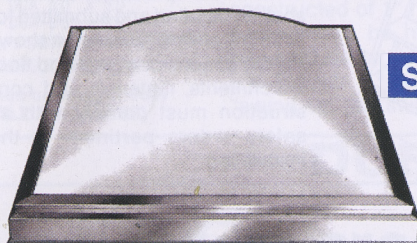
Plastic skylights shall be standard units, Cat. No. _____ as manufactured by Dur-Red Products. They shall be factory fabricated, each consisting of a one-piece acrylic plastic pyramid, extruded aluminum retaining frame and curb frame sloping condensation gutter for drainage. The retaining frame shall have a minimum thickness of .070. Skylights may be specified with either clear or white translucent acrylic.

SELF-FLASHING

CURB MOUNTED



DUR-RED® PRODUCTS



S & R

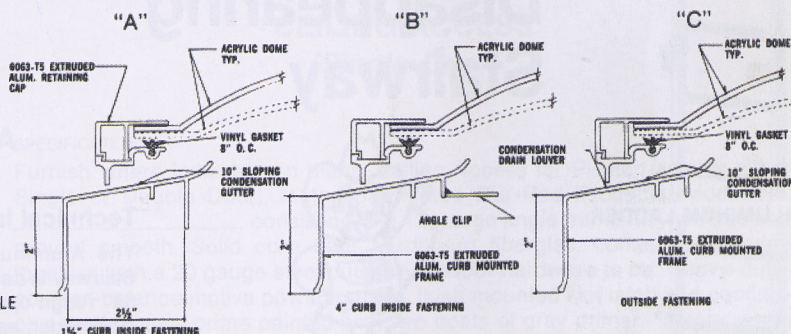
DIMENSIONS IN INCHES

MODEL	CURB OPENING	MODEL	CURB OPENING
S2020	14 1/4 x 14 1/4	R2052	14 1/4 x 46 1/4
S2424	19 x 19	R2852	22 1/4 x 46 1/4
S2828	22 1/4 x 22 1/4	R3296	25 1/2 x 89 1/2
S3636	30 1/4 x 30 1/4	R3652	30 1/4 x 46 1/4
S4242	37 x 37	R3676	30 1/4 x 69 1/2
S5252	46 1/4 x 46 1/4	R4280	37 x 75
S6060	55 x 55	R4364	38 x 59
S8080	75 x 75	R5296	46 1/4 x 89 1/2
S9898	92 1/2 x 92 1/2	R6476	57 1/2 x 69 1/2
R2028	14 1/4 x 22 1/4	R6496	57 1/2 x 89 1/2
		R5276	46 1/4 x 69 1/2

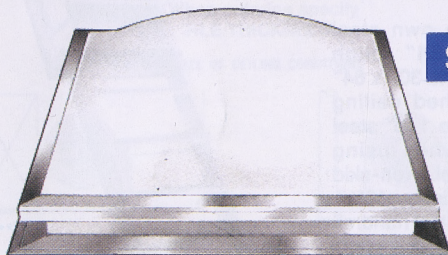
NOTE: Double Dome Model SDD or RDD
Specify Single or Double Dome Clear Over White

SPECIFICATIONS:

Plastic skylights shall be standard units, Cat. No. _____ as manufactured by Dur-Red Products. They shall be factory fabricated, each consisting of a one-piece acrylic plastic dome, extruded aluminum retaining frame and curb frame sloping condensation gutter for drainage. The retaining frame shall have a minimum thickness of .070. Skylights may be specified with either clear or white translucent acrylic dome.



SKYLIGHT DOMES



SF

SELF-FLASHING DOME

SPECIFICATIONS:

Plastic skylights shall be Dur-Red Products, low silhouette Self Flashing Skylight Cat. No. _____ as manufactured by Dur-Red Products. The skylight shall be factory assembled units each consisting of a one-piece acrylic plastic dome formed from white translucent or clear colorless acrylic material, self flashing curb frames with 2 3/4\"/>

SKYLIGHTS TO MATCH YOUR NEEDS!

The specifications on this sheet are given as general information and are not binding. Red Plastic Co., Inc., reserves the right to effect at any time without prior notice, those alterations to parts, fittings and accessory equipment which they may deem necessary for any reason whatsoever. Oversize doors may be spliced



Manufactured by Red Plastic Co., Inc.

Visit our website at: www.dur-red.com
e-mail us at: dur4900@aol.com

- PLASTIC SKYLIGHTS
- DISAPPEARING STAIRWAY
- SMOKE HATCHES
- PIT DOORS
- METAL BUILDING CURBS
- WIRE GLASS SKYLIGHTS
- ROOF HATCHES
- CEILING ACCESS
- SIDEWALK DOORS
- ROOF CURBS



4900 CECILIA STREET • CUDAHY, CA 90201 • (323) 771-9000 • FAX: (323) 771-9009

Printed in U.S.A.