

KEELER
and
WEBER-KNAPP

RADIO CABINET HARDWARE

KEELER BRASS COMPANY

GRAND RAPIDS, MICH.

METAL AND PLASTIC HARDWARE
WOOD SCREWS AND TAPPING SCREWS



THE WEBER-KNAPP COMPANY

JAMESTOWN, N. Y.

METAL HARDWARE

(a division of Keeler Brass Co.)



Catalog No. 44

ILLUSTRATED herein is a representative selection of radio and phonograph cabinet trimmings and hardware produced by the Keeler Brass Company and its eastern associate The Weber-Knapp Company.

This catalog, while dealing specifically with radio-phonograph accessories, by no means represents the entire line of either company. Reference to Keeler catalog No. 41 and Weber-Knapp catalog No. 41 will give a more complete survey, and inquiries are invited on any items not found in these catalogs.

The Keeler Brass Company has an extensive line of modern style trimmings in metal and plastics, of which a small selection is shown on the following pages. Photographs will from time to time be published as new items are added, but rapidly changing styles prohibit a complete catalog of such hardware.

Please do not hesitate to call on either company for items not illustrated.

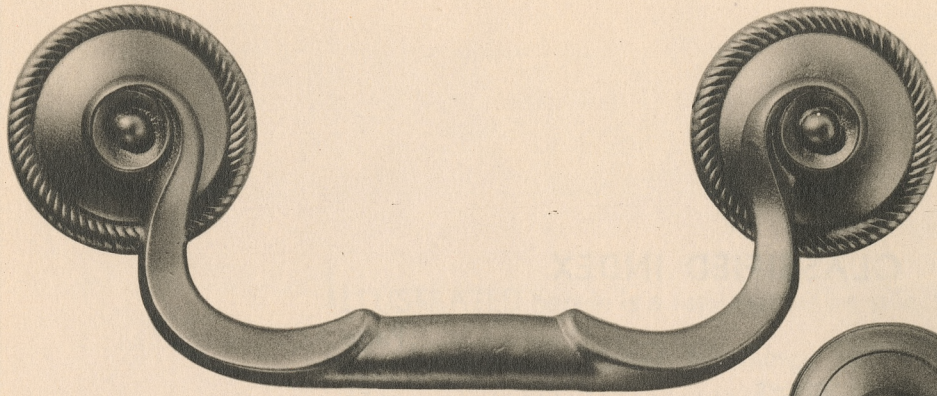
KEELER BRASS CO.
GRAND RAPIDS, 2, MICH.

THE WEBER-KNAPP CO.
JAMESTOWN, N. Y.

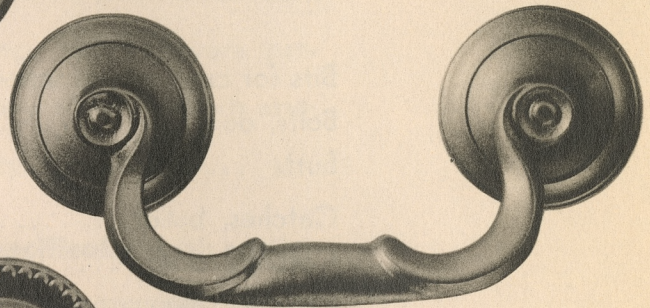
CLASSIFIED INDEX

	Page
Bits for cross recess screws	37
Bolts, door	34
Butts	31
Catches, bullet	32
Catches, door	34
Catches, elbow	34
Catches, friction	34
Equalizer, door	33
Hinges, butt	31
Hinges, continuous	32
Hinges, lid support	24, 25
Hinges, pin	25 through 30
Hinges, semi-concealed	25 through 30
Key escutcheons	8, 11
Knobs	10, 11
Nails, drive (finishing)	35
Pulls	4 through 11
Screws	35, 36
Slide, phonograph drawer	12
Supports, balancing	13, 14, 15
Supports, combination hinge	24, 25
Supports, friction	16, 22
Supports, lid or fall	16 through 23
Washers, finishing	34

*The rigid construction of these pulls was developed especially for radio cabinets to eliminate all rattling and vibration. Backs are separate and interchangeable. For other styles see Keeler catalog 41. Bails may also be used without backs if desired.



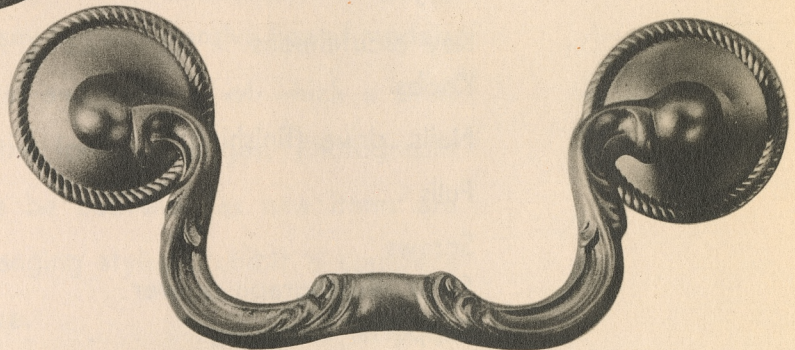
*K5924-H467 Rigid Pull 3 1/2" Boring
CAST



*K5431-H391 Rigid Pull 2 1/4" Boring
CAST



*K5922-K2246 Rigid Pull 3 1/2" Boring
CAST

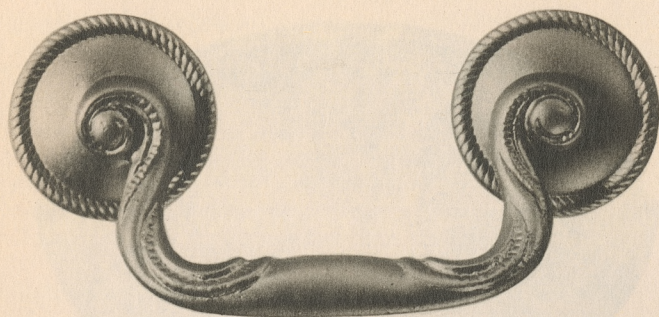


*K5912-H466 Rigid Pull 3" Boring
CAST

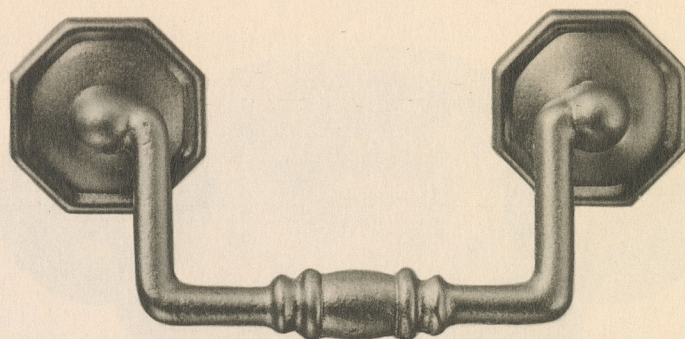


*K5945-K2246 Rigid Pull 3 1/2" Boring
CAST

ILLUSTRATIONS ACTUAL SIZE



*K6206-H466 Rigid Pull $2\frac{1}{4}$ " Boring
CAST



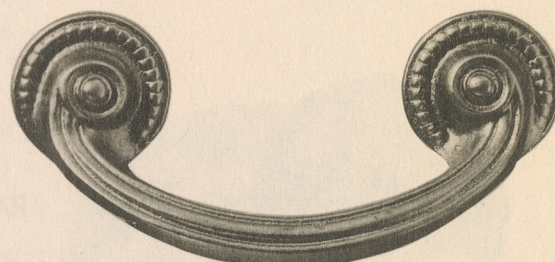
*K6342-K2346 Rigid Pull $2\frac{1}{2}$ " Boring
CAST

*SEE NOTE PAGE 4



K1999 Pull $2\frac{1}{2}$ " Boring

K2000 Pull 3" Boring
CAST



K5588 Pull 2" Boring
CAST



K1478 Pull $2\frac{1}{2}$ " Boring

K1477 Pull 2" Boring

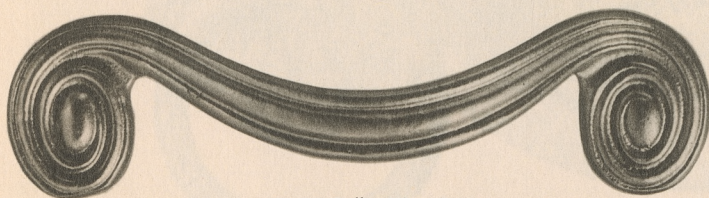
K1479 Pull 3" Boring
CAST



K405 Pull 2" Boring

K406 Pull $2\frac{1}{2}$ " Boring

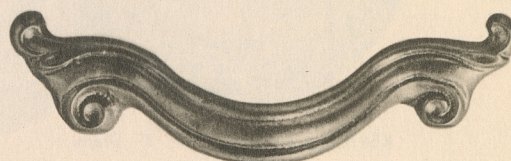
K407 Pull 3" Boring
CAST



K3797 Pull 3" Boring

K5734 Pull $3\frac{1}{2}$ " Boring

K3798 Pull 4" Boring
CAST

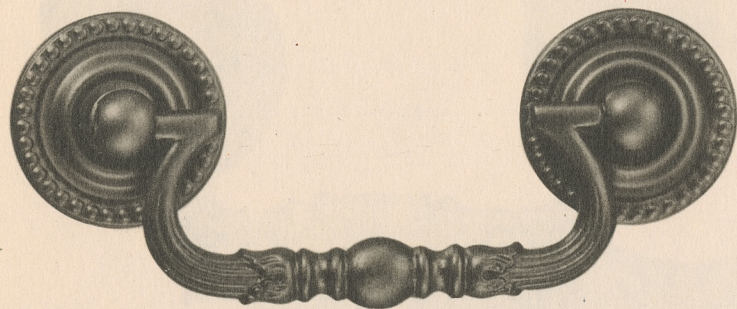


K5727 Pull $1\frac{3}{4}$ " Boring

K4127 Pull 3" Boring

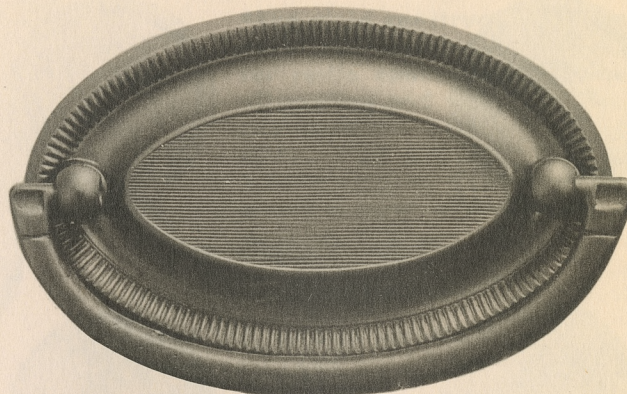
K3985 Pull $3\frac{1}{2}$ " Boring
CAST

ILLUSTRATIONS ACTUAL SIZE



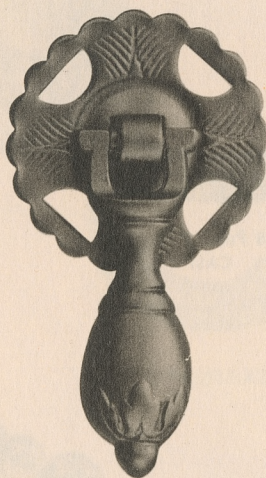
K1064 - K2246 Pull 2 1/2" Boring

K1065 Bail 3"
K5571 Bail 2 1/2"
K5361 Bail 2"
CAST



K5644 - BR271 Pull 2 1/2" Boring

K5643 - BR270 Pull 2" Boring
WROUGHT BRASS - CAST BAILS

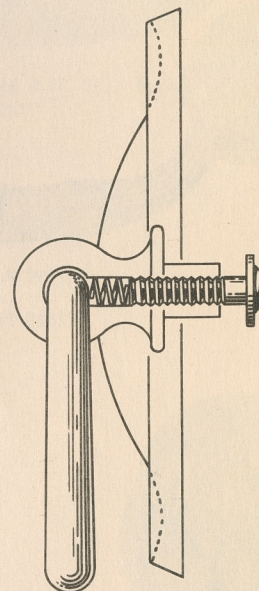


*H19 Pendant
G146 Back

NON-VIBRATING SPRING CONSTRUCTION PATENT No. 2,270,923

This patented spring construction eliminates all rattling and vibration from pulls, thus permitting the use of many standard patterns which would otherwise be objectionable on radio cabinets. Most of our oval, ring, pendant, two post and round pulls can be so equipped.

Just specify "spring construction."



Drawing illustrates construction
on oval pull.

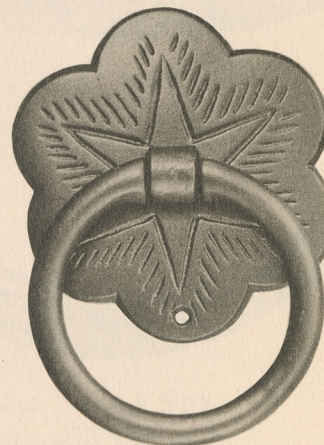


K5870 1/2 - K1240 1/2 Pull 2" Diam.

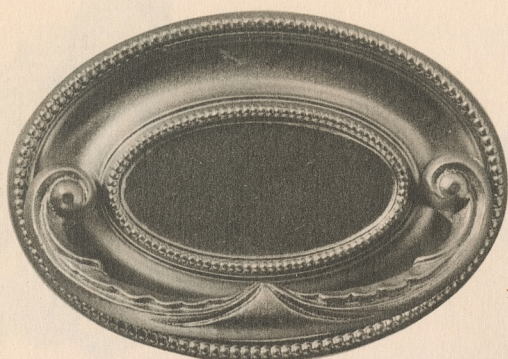
K5871 1/2 - K5686 1/2 Pull 2 3/8" Diam.
Top Boring
WROUGHT STEEL - WROUGHT RINGS
Also available with Plain or Figured
Wrought Rings

*For other sizes
see Keeler
Catalog 41.

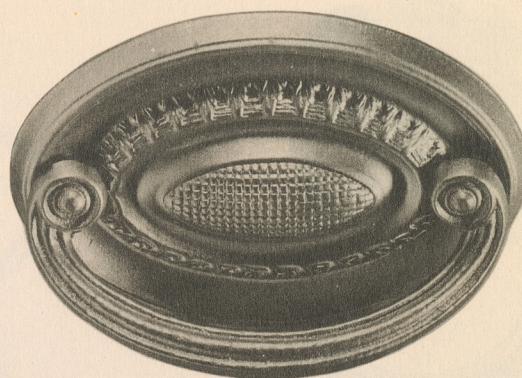
ILLUSTRATIONS ACTUAL SIZE



*F634 Ring
G92 Back



K4132 Back Wrought
*K5926 Bail Cast
2" BORING

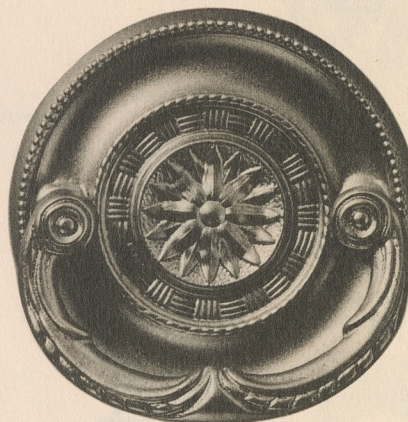


G430 Back Wrought
*K5433 Bail Cast
2" BORING

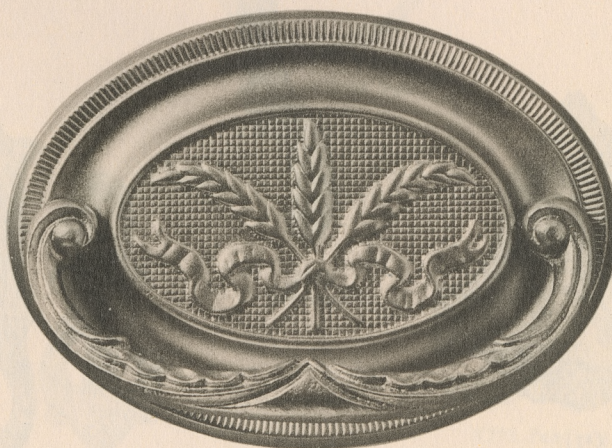
***The bails on these pulls are rigid to eliminate rattling and vibration having been designed especially for radio cabinets. They may be used interchangeably on other round and oval pulls of the same boring and general shape.**



K5880 Back Wrought
*K5895 Bail Cast
1 1/2" BORING

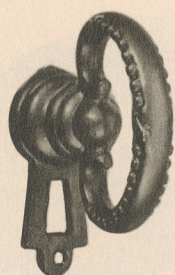


BR2354 Back Wrought
*K5925 Bail Cast
1 1/2" BORING

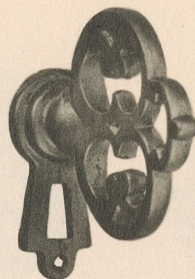


K5722 Back Wrought
*K5927 Bail Cast
2 1/2" BORING

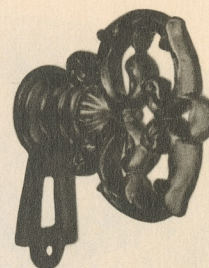
ILLUSTRATIONS ACTUAL SIZE



K1225



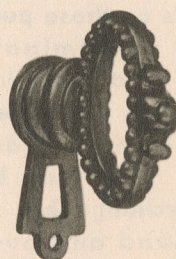
K1226



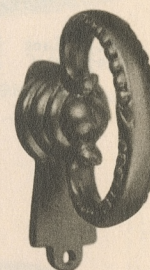
K1248



K1199



K1247



K5242

All items on this page attach with machine screws.



K1216
Finger Pull



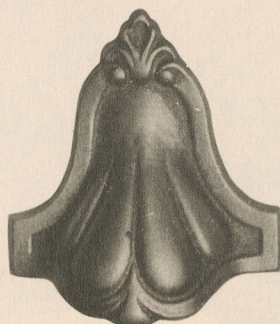
K1257
Finger Pull



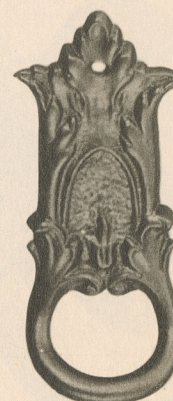
K913
Finger Pull



K533
Finger Pull



K1217
Finger Pull



H783
Finger Pull

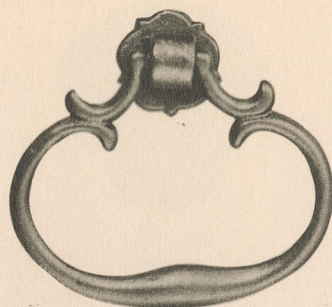


K901
Finger Pull

ILLUSTRATIONS ACTUAL SIZE



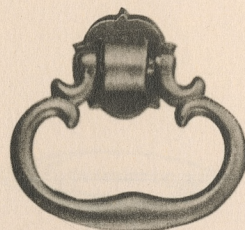
K6369 Rigid Pull
CENTER BORING



BR49 Ring
K1020 Back



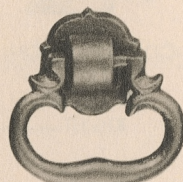
K6386 Rigid Pull
CENTER BORING



BR48 Ring
K1020 Back



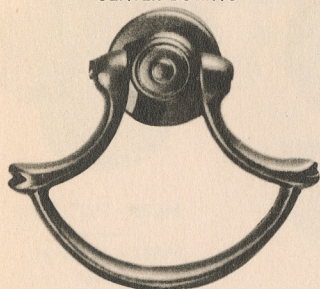
K5967 Rigid Pull
CENTER BORING



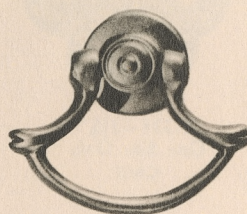
BR47 Ring
K1020 Back



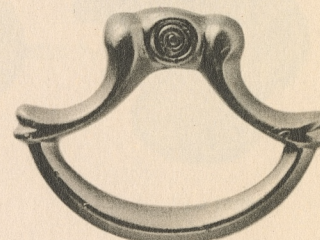
K6361 Rigid Pull
CENTER BORING



K2350 - K2351 Pull
K2350 - K5759 with
Attached Wood Screw



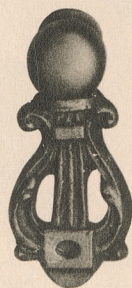
K2349 - K2402 Pull
K2349 - K5758 with
Attached Wood Screw



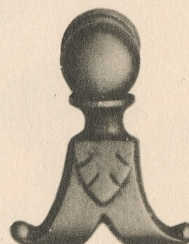
K6549
Rigid Pull



K794 Pendant
Rigid



K796 Pendant
Rigid



K793 Pendant
Rigid



795 Pendant
Rigid

ILLUSTRATIONS ACTUAL SIZE



4300 - 1 1/8"
4302 - 1 1/2"
4301 - 1 1/4"
G227 - 3/4"
WROUGHT



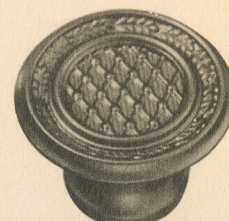
F550 - 1 1/8"
G232 - 3/4"
WROUGHT



K86 - 1 1/8"
K83 - 3/4"
WROUGHT



F696 - 1 1/8"
G229 - 3/4"
WROUGHT



BR2381 - 1 1/8"
BR2382 - 1 1/4"
BR2380 - 7/8"
WROUGHT



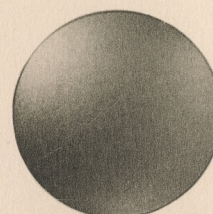
BR2335 - 1 1/8"
BR2336 - 1 1/4"
BR2334 - 7/8"
WROUGHT



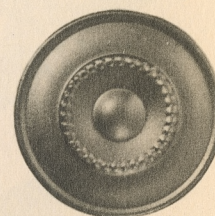
F622 - 1 1/8"
F626 - 1 5/8"
K2370 - 1 1/4"
G525 - 3/4"
WROUGHT



CONSTRUCTION
OF
KNOBS AT
RIGHT →



K859 - 1 1/8"
K1572 - 3/4"
WROUGHT



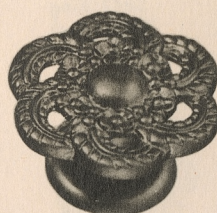
K1223 - 1 1/8"
K1559 - 3/4"
WROUGHT



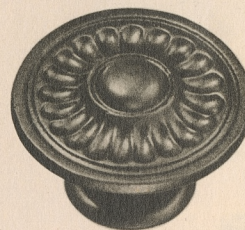
H843 - 1"
H842 - 3/4"
CAST



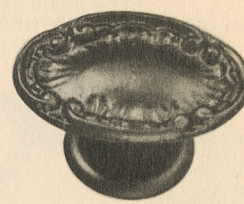
H822 - 1"
H821 - 3/4"
CAST



K1334 - 1 1/8"
One Size Only
CAST



F656 - 1 1/4"
G967 - 1 1/2"
F654 - 1"
CAST



H678 - 1 1/4" Oval
H677 - 1" Oval
CAST



K1089 - 1/2"
SOLID



3571 - 5/8"
3572 - 3/4" Wood Screw
3572 - G141 3/4" Mach. Screw
3573 - 1"
3574 - 1 1/4"
3631 - 1 1/2"
WROUGHT



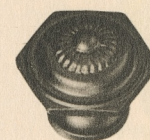
K194 - 3/4"
K1088 - 1/2"
K195 - 1"
K196 - 1 1/4"
K197 - 1 1/2"
SOLID



1343 - 5/8"
1439 - 3/4"
1439 - G141 3/4" Mach. Screw
3751 - 1/2"
WROUGHT
G400 - 5/8" Mach. Screw
SOLID

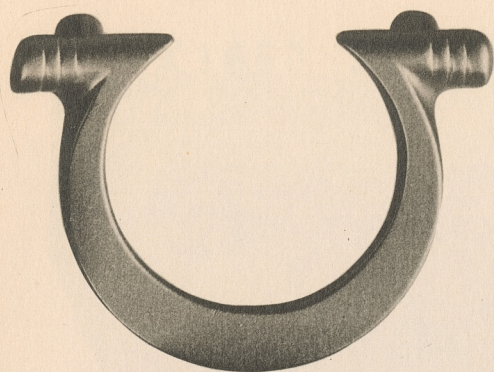


H544 - G141 - 3/4"
H544 - 3/4"
Wood Screw
H543 - 5/8"
Wood Screw
WROUGHT

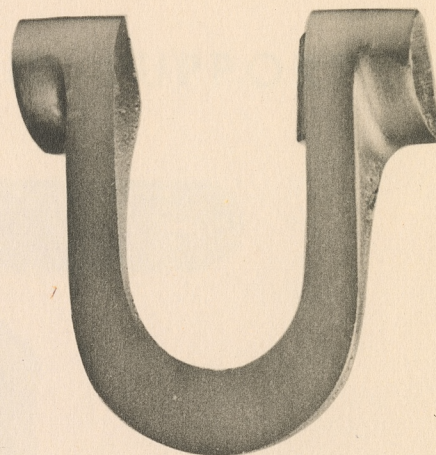


H241 - 3/4"
SOLID

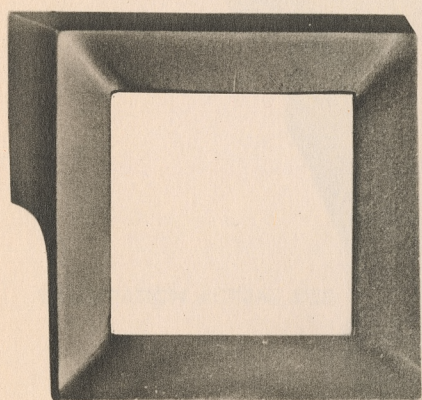
ILLUSTRATIONS ACTUAL SIZE



K5169 Pull $1\frac{3}{4}$ " Boring
CAST



K5170 Pull $1\frac{3}{4}$ " Boring
CAST

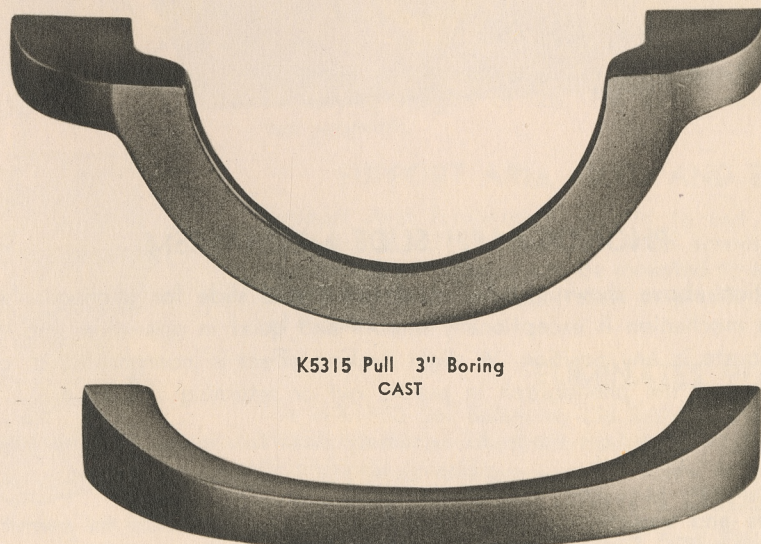


K6200 Pull $1\frac{3}{4}$ " Boring
CAST

ILLUSTRATIONS ACTUAL SIZE



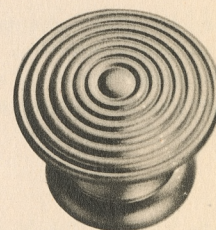
K5222 Pull Top Boring
CAST



K5315 Pull 3" Boring
CAST



K5868 Key Esc.
CAST

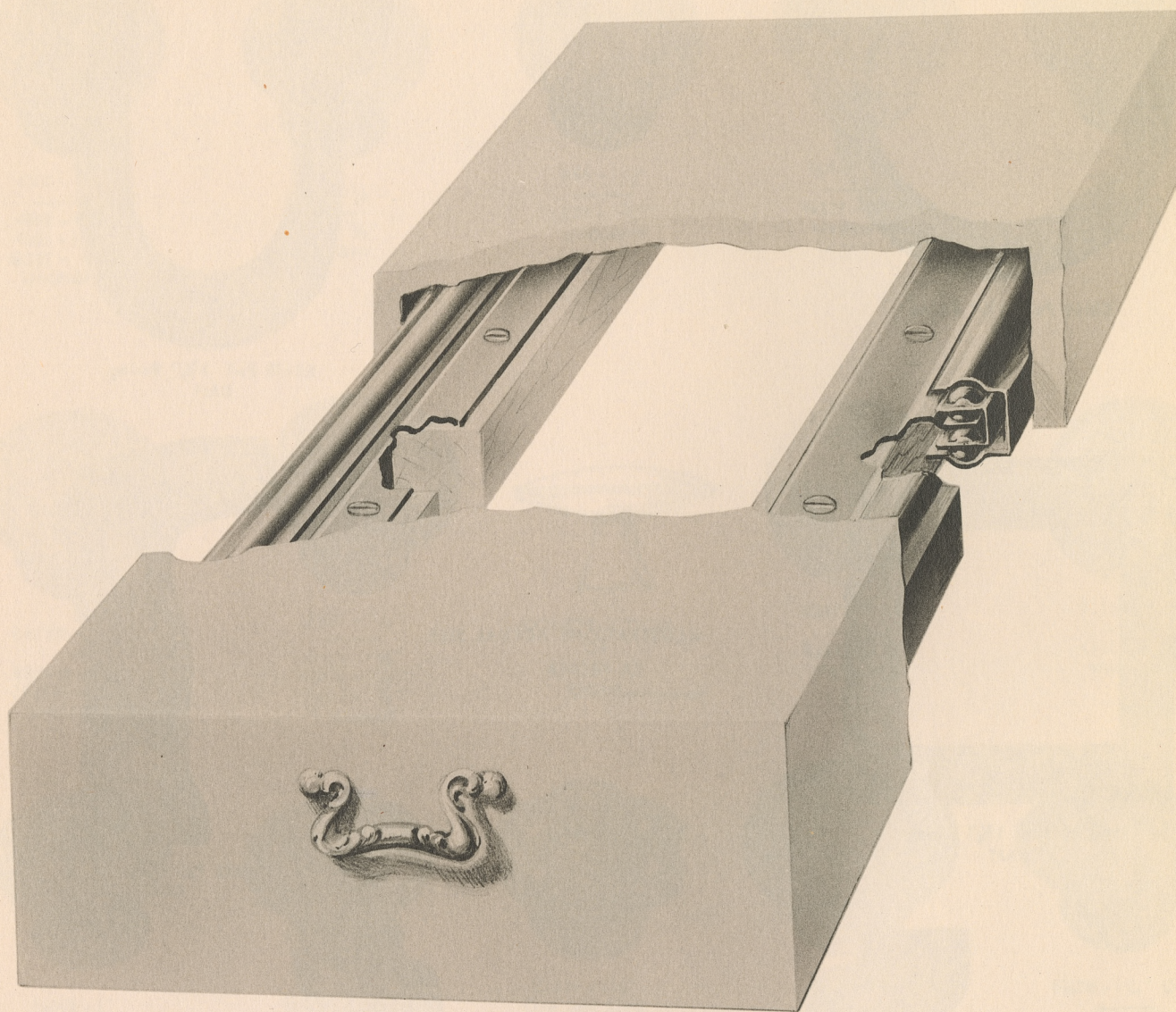


K4293 $1\frac{1}{8}$ " Knob
SOLID

K4671 Pull 3" Boring

K4672 Pull $3\frac{1}{2}$ " Boring

K5019 Pull 4" Boring
CAST



PHONOGRAPH SLIDE MECHANISM

The illustration above shows installation of the K6620 slide for phonographs. This ball-bearing mechanism is exceptionally smooth and quiet in operation, and will not rattle or vibrate in any position. A slight braking effect is incorporated to prevent severe jarring of the phonograph in pulling out or returning the drawer.

The parts of this slide are made to extremely close tolerances, thereby insuring a fine mechanism which will operate with complete satisfaction for years.

Other types and variations of the illustrated slide are available to permit many different installations. For details on other types and full installation instructions, ask for print X8877.

WK1850 SELF-BALANCING LID SUPPORT

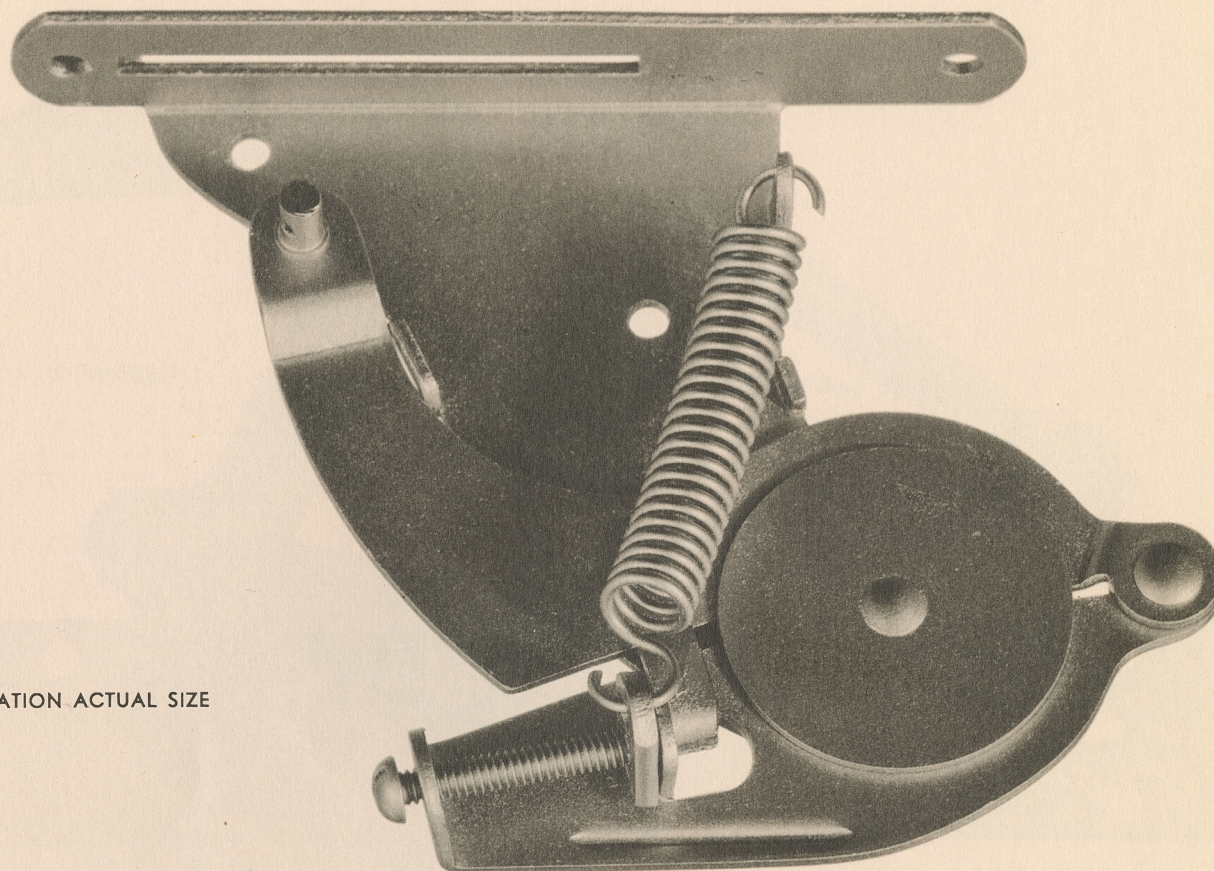
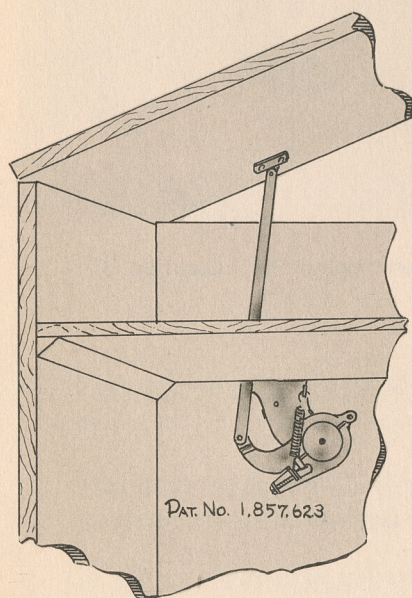


ILLUSTRATION ACTUAL SIZE

**SPRING TENSION ADJUSTABLE**

By means of the set screw, shown in illustration, spring tension can be adjusted to varying weights of lids. For extra heavy lids, we recommend the use of two supports.

SUPPORT ARM, CLIPS AND ESCUTCHEON PLATES

Support Arm furnished in lengths to suit your requirements. Clip which is fastened to lid by means of wood screws, made flat or right angle or to specifications. Support can be mounted to top or bottom of motor board or to side of cabinet. Wrought steel or plastic escutcheons available for any type of mounting.

ELIMINATES WARPAGE

The WK1850 Self-Balancing Lid Support will hold the lid at any desired angle. When the lid is closed, the spring is in tension, holding lid down which tends to eliminate warpage.

WHEN ORDERING

Specify Weight of Lid, Length of Arm, Finish and Hand of Support. Mention whether support is to be mounted to top or bottom of motor board or to side of cabinet.

SELF-BALANCING LID SUPPORT

For Radio, Phonograph and Combination Cabinets

WK2686 Self-Balancing Lid Support

Plate $6\frac{1}{4}" \times 1\frac{1}{4}"$

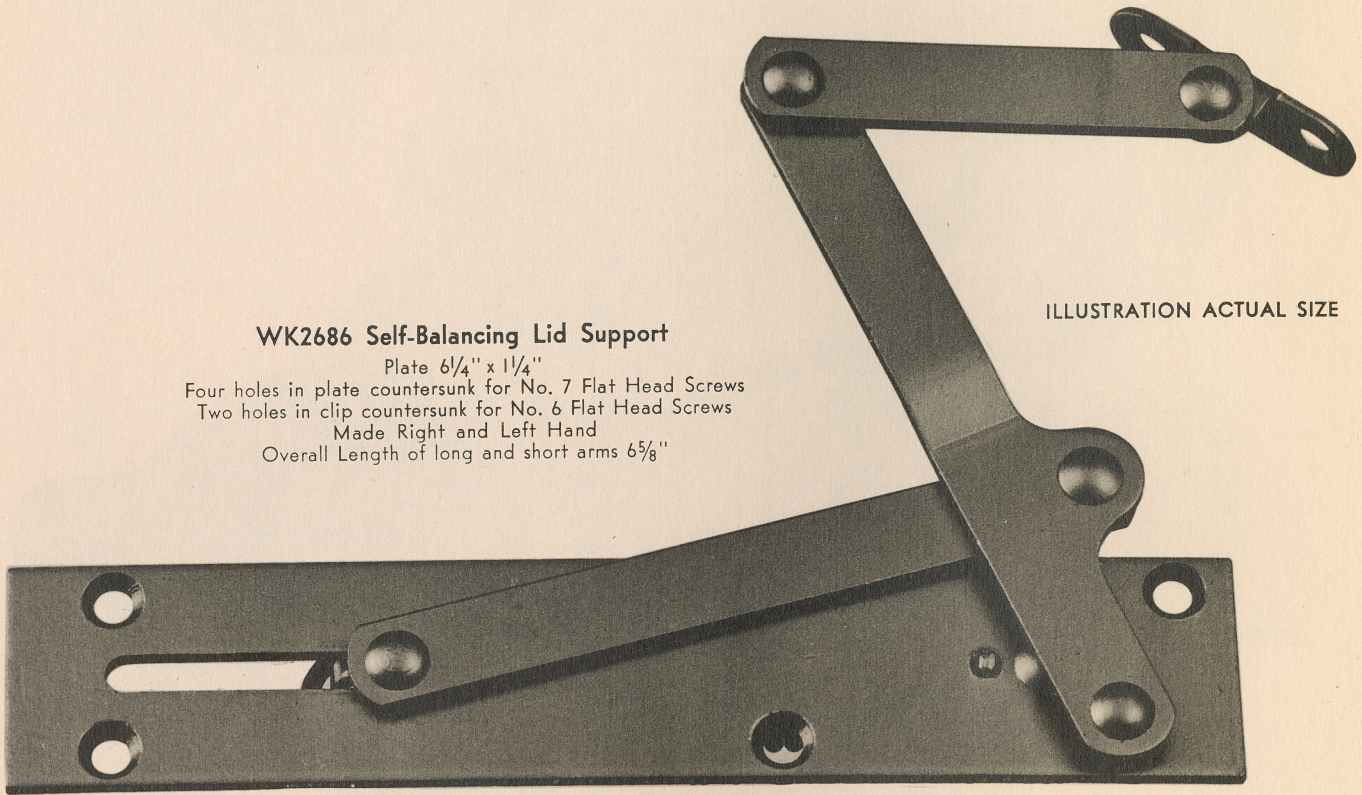
Four holes in plate countersunk for No. 7 Flat Head Screws

Two holes in clip countersunk for No. 6 Flat Head Screws

Made Right and Left Hand

Overall Length of long and short arms $6\frac{5}{8}"$

ILLUSTRATION ACTUAL SIZE



EASY INSTALLATION

This support is designed to be mounted above motor board where cabinet construction will not permit mechanism under motor board.

ADJUSTING ACCESSIBILITY

Can be supplied with several spring tensions, and can be adjusted to any weight lid. Location of adjusting screw will not interfere with cabinet construction or radio parts.

EXTREMELY EFFICIENT

Noiseless. Can't let lid fall with a crash. No injuries to fingers because of lid falling down. One-hand operation.

WHEN ORDERING

Specify Weight of Lid, Finish, and if other than standard arm is required. Also, if right or left hand support is wanted. Left hand support is shown in photograph. Regularly supplied in statuary bronze finish. Other finishes if desired.

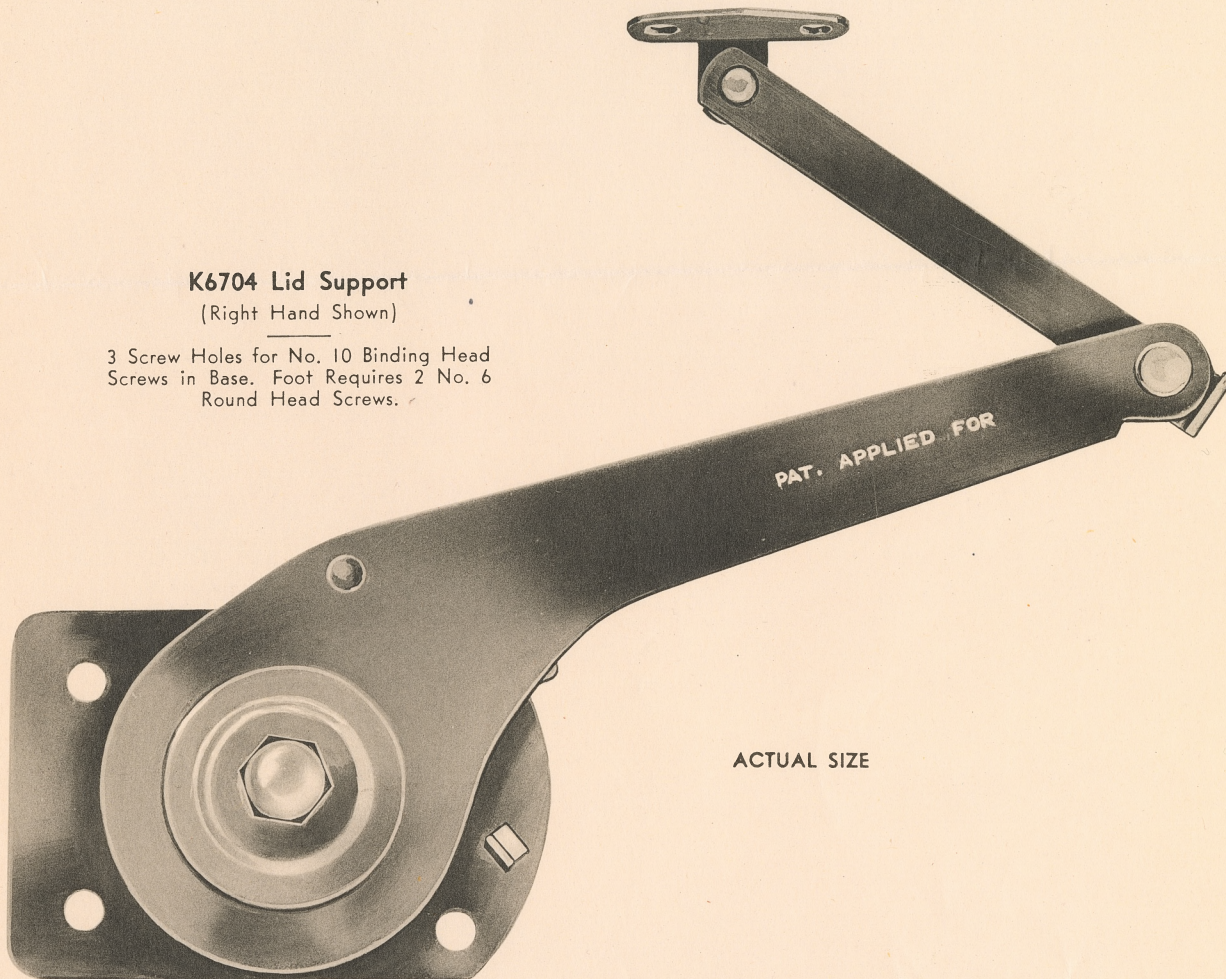
FOR EXPERIMENTAL PURPOSES

We will be pleased to mount the correct type of support to your cabinet if you will send same to us. This will be done at no cost to you and with no obligation to buy.

SELF-BALANCING LID SUPPORT

K6704 Lid Support
(Right Hand Shown)

3 Screw Holes for No. 10 Binding Head
Screws in Base. Foot Requires 2 No. 6
Round Head Screws.



ACTUAL SIZE

When cabinet lid is closed all tension in the K6704 Support is automatically released so that the lid remains closed by its own weight. This greatly reduces the chance of lid warpage.

Adjustment for different weights is extremely simple. Tightening or loosening the acorn nut changes tension and is easily accomplished without special tools or removal of support from cabinet.

Lid will remain open at any desired angle up to 60° at which arm automatically stops further opening.

SELF-BALANCING LID SUPPORT

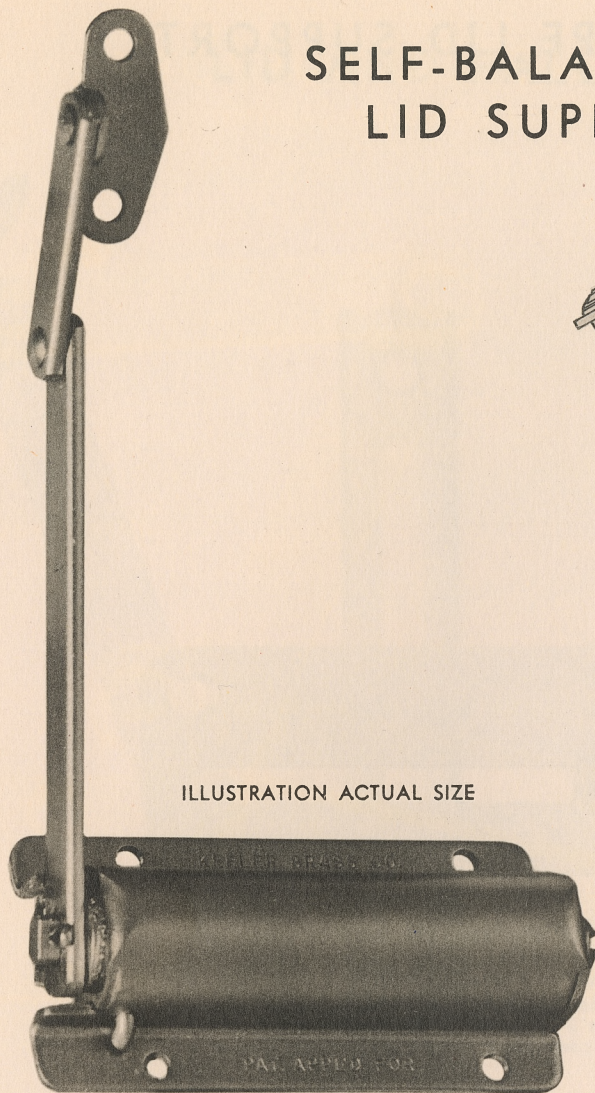
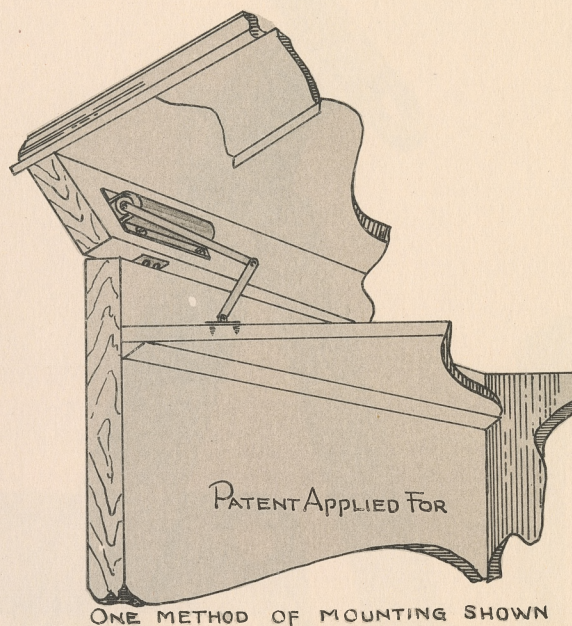


ILLUSTRATION ACTUAL SIZE



ONE METHOD OF MOUNTING SHOWN

Made Right or Left Hand. Also available with straight flat attaching foot at end of Arm.

K6185 SELF-BALANCING LID SUPPORT

This new, small Self-Balancing Lid Support was designed for Portable or Table Model Radio Cabinets, Phonographs or Combinations. Just the thing for Console type Cabinets with split Lids.

Due to thin stock commonly used on side panels of most small radio cabinets, the problem has always been, how and where to mount necessary Lid Supports. This new Support solves this problem for you. The K6185 Support can be mounted several ways. It is so constructed that the heavier back panel can be used to mount the Support to, with Arm then screwed to Lid. Or, this procedure can be reversed. The Support can also be mounted directly to Motor Board.

If your Cabinet has a Box Lid, the Support can be screwed to the back side of the Box Lid (inside) with Arm either screwed to Motor Board or to side of Cabinet.

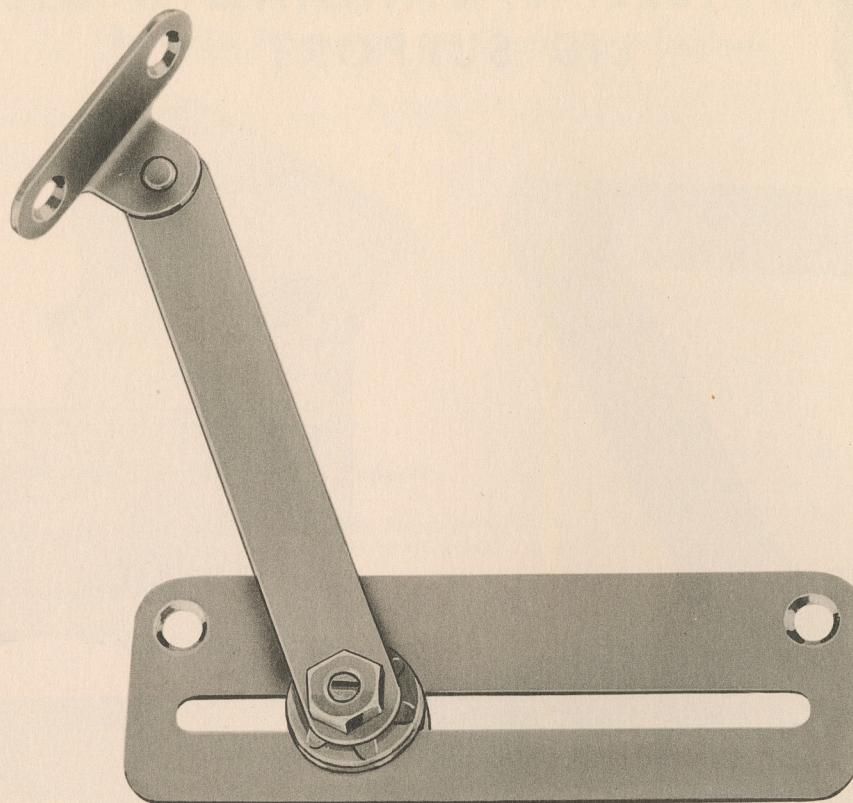
There is no loss of time due to adjusting this Support for weight of Lid used. This saves you money. We do all the adjusting for you. When ordering this Support, just tell us the dimensions and weight of the Lid of the particular Cabinet on which the Support is to be used. We will then assemble the Support with the correct and proper spring tension.

The small size and compact shape of this Support will permit its use on very small cabinets.

We suggest you send us one of your Cabinets. We will select correct spring tension, and mount Support in most advantageous position.

THERE IS NO CHARGE FOR THIS SERVICE

FRICTION TYPE LID SUPPORT



WK2387 Friction Type Lid Support

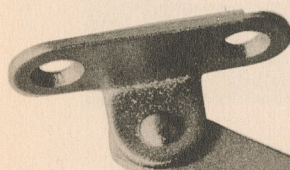
Length of plate $3\frac{3}{4}$ "

Width of plate $1\frac{1}{4}$ "

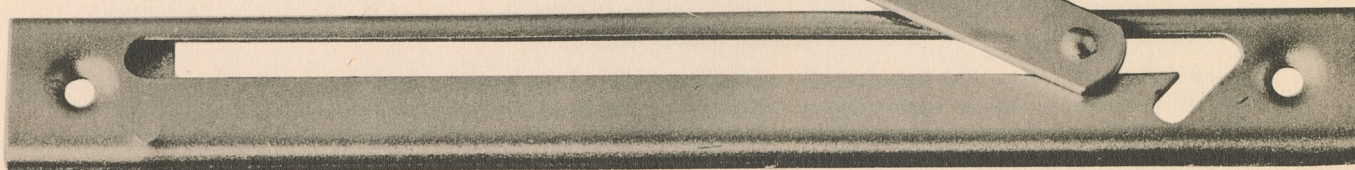
Length of slot $3\frac{3}{4}$ "

Length of arm $3\frac{1}{16}$ ", other lengths to order

Holes, plate and clip countersunk for No. 6 Flat Head Screws



ILLUSTRATIONS ACTUAL SIZE



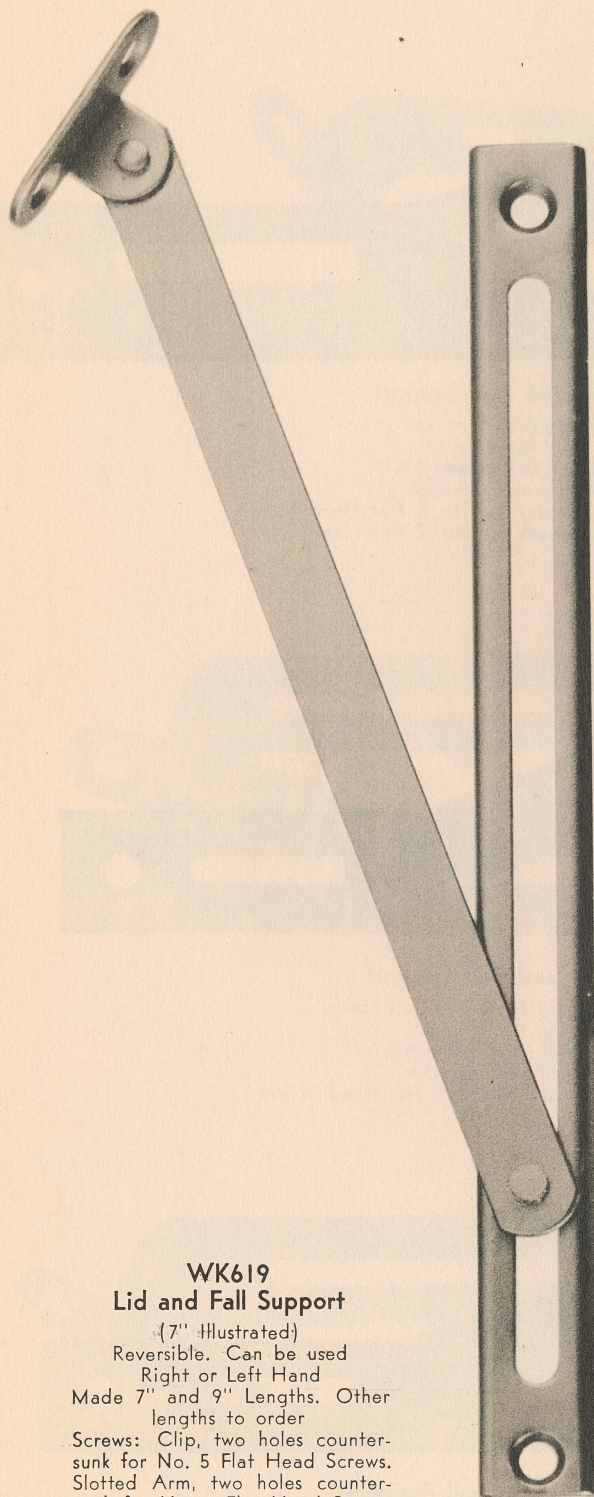
WK2792 Lid and Fall Support

(With Spring Stop Feature)

Spring stop eliminates noises caused by vibration

Not reversible. Made Right and Left Hand

LID AND FALL SUPPORTS



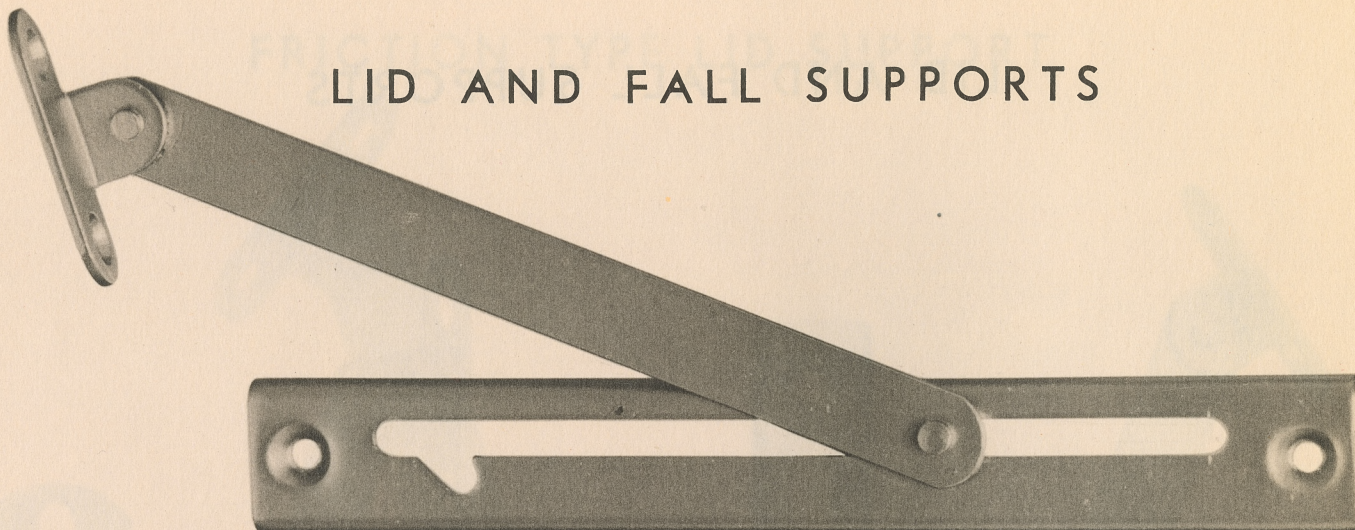
WK619
Lid and Fall Support
 (7" Illustrated)
 Reversible. Can be used
 Right or Left Hand
 Made 7" and 9" Lengths. Other
 lengths to order
 Screws: Clip, two holes counter-
 sunk for No. 5 Flat Head Screws.
 Slotted Arm, two holes counter-
 sunk for No. 6 Flat Head Screws



WK1582
Lid and Fall Support
 Reversible. Can be used
 Right or Left Hand
 Length overall of slotted arm 5 $\frac{3}{4}$ "
 Length overall of arm with clip
 5 $\frac{3}{4}$ ", also in lengths to order
 Screws: Clip, two holes counter-
 sunk for No. 7 Flat Head Screws.
 Slotted Arm, two holes pierced
 for No. 8 Round Head Screws

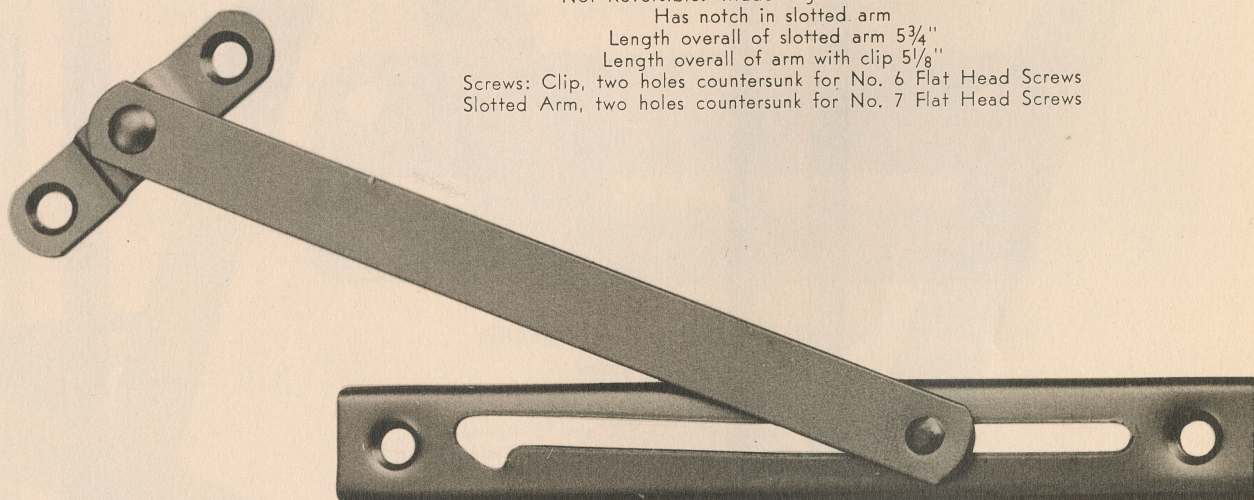
ILLUSTRATIONS ACTUAL SIZE

LID AND FALL SUPPORTS

**WK2202 Lid and Fall Support**

Not Reversible. Made Right and Left Hand

Has notch in slotted arm

Length overall of slotted arm $5\frac{3}{4}$ "Length overall of arm with clip $5\frac{1}{8}$ "Screws: Clip, two holes countersunk for No. 6 Flat Head Screws
Slotted Arm, two holes countersunk for No. 7 Flat Head Screws**WK2603 Lid and Fall Support**

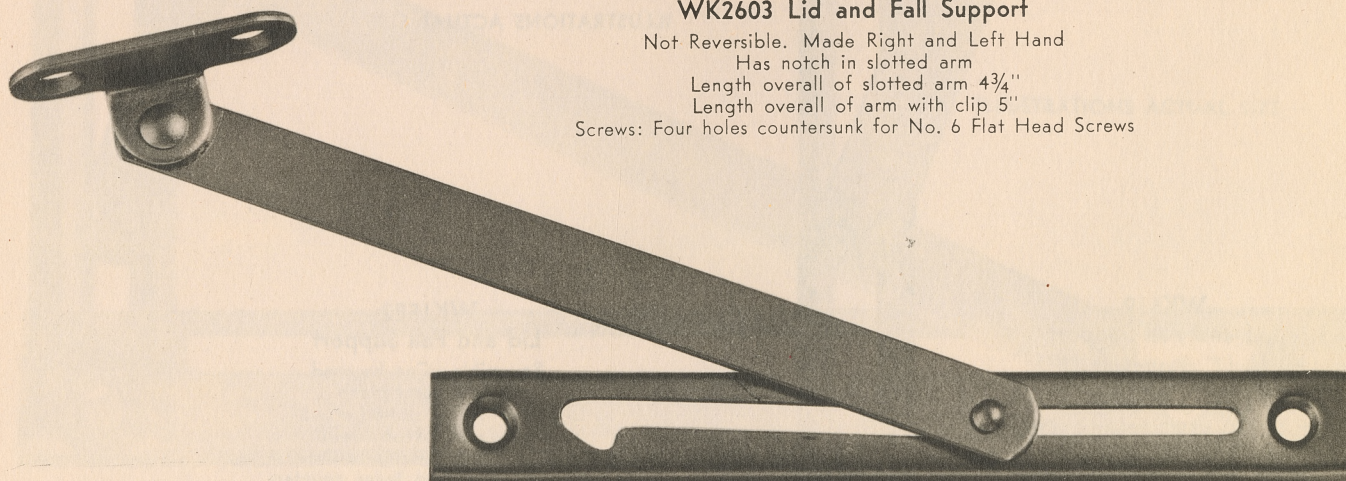
Not Reversible. Made Right and Left Hand

Has notch in slotted arm

Length overall of slotted arm $4\frac{3}{4}$ "

Length overall of arm with clip 5"

Screws: Four holes countersunk for No. 6 Flat Head Screws

**WK2756 Lid and Fall Support**

Not Reversible. Made Right and Left Hand

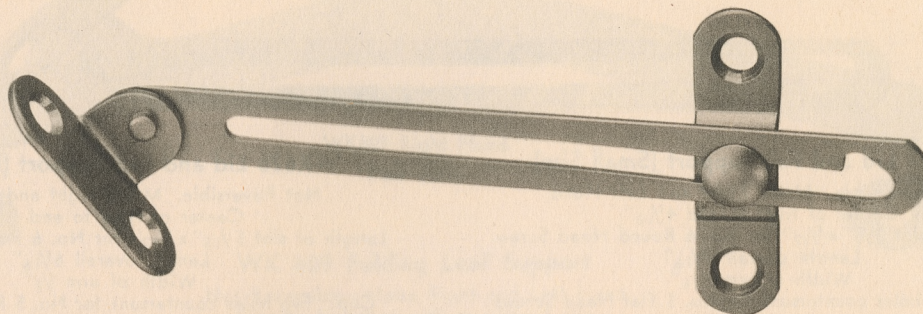
Has notch in slotted arm

Length overall of slotted arm $4\frac{3}{4}$ "Length overall of arm with clip $5\frac{1}{8}$ "

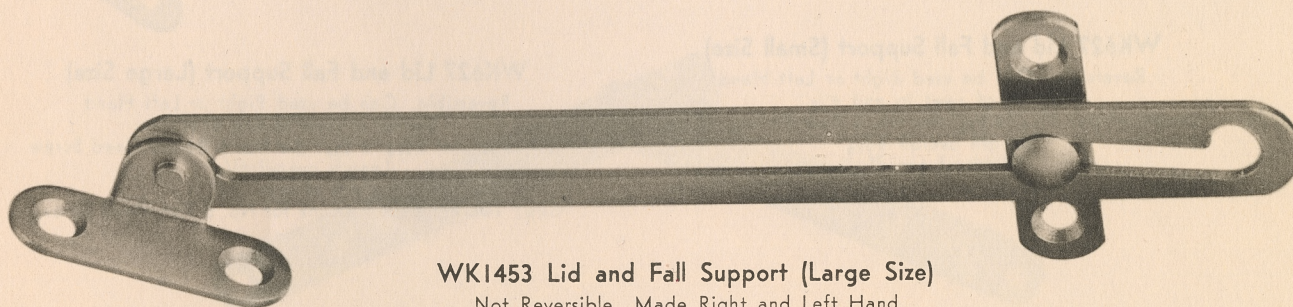
Screws: Clip and slotted arm countersunk for No. 6 Flat Head Screws

ILLUSTRATIONS ACTUAL SIZE

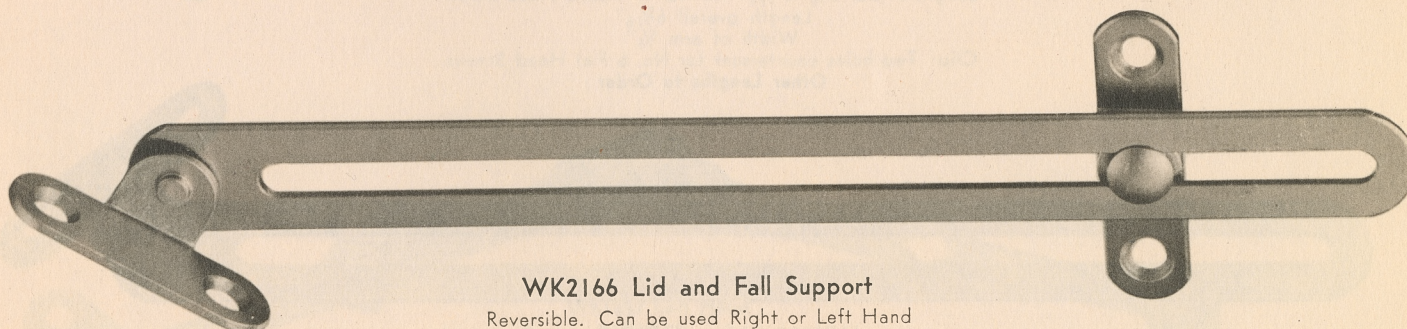
LID AND FALL SUPPORTS

**WK1453 Lid and Fall Support (Small Size)**

Not Reversible. Made Right and Left Hand
 Center of rivet to end $4\frac{1}{16}$ "
 Length of slot $3\frac{1}{2}$ " Length overall $4\frac{5}{16}$ "
 Width of arm $\frac{7}{16}$ "
 Clip: Two holes countersunk for No. 5 Flat Head Screws
 Sliding Clip: Two holes countersunk for No. 6 Flat Head Screws

**WK1453 Lid and Fall Support (Large Size)**

Not Reversible. Made Right and Left Hand
 Center of rivet to end 6"
 Length of slot $5\frac{3}{8}$ " Length overall $6\frac{5}{16}$ "
 Width of arm $\frac{5}{8}$ "
 Clip: Two holes countersunk for No. 6 Flat Head Screws
 Sliding Clip: Two holes countersunk for No. 6 Flat Head Screws

**WK2166 Lid and Fall Support**

Reversible. Can be used Right or Left Hand
 Center of rivet to end $6\frac{3}{8}$ "
 Length of slot $5\frac{3}{4}$ " Length overall 6 $\frac{5}{8}$ "
 Width of arm $\frac{5}{8}$ "
 Clip: Two holes countersunk for No. 6 Flat Head Screws
 Sliding Clip: Two holes countersunk for No. 6 Flat Head Screws

ILLUSTRATIONS ACTUAL SIZE

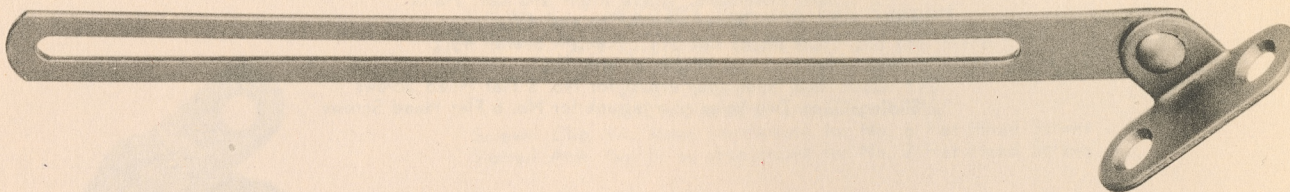
LID AND FALL SUPPORTS

**WK626 Lid and Fall Support (Small Size)**

Not Reversible. Made Right and Left Hand
 Center of rivet to end $4\frac{1}{16}$ "
 Length of slot $3\frac{1}{2}$ " x $\frac{5}{32}$ " for No. 6 Round Head Screw
 Length overall $4\frac{5}{16}$ "
 Width of arm $\frac{7}{16}$ "
 Clip: Two holes countersunk for No. 5 Flat Head Screws

WK626 Lid and Fall Support (Large Size)

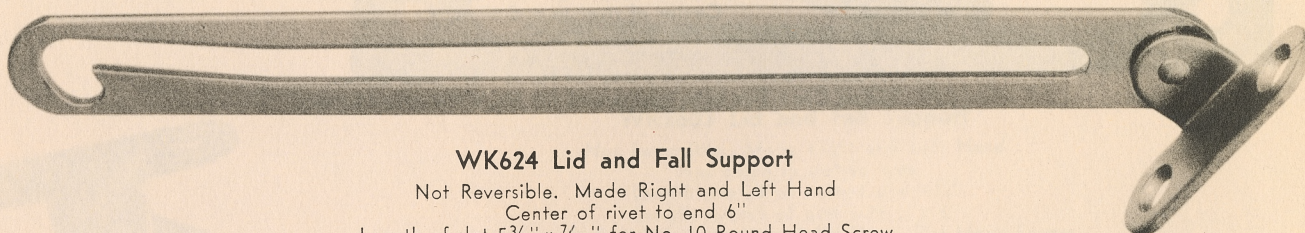
Not Reversible. Made Right and Left Hand
 Center of rivet to end $5\frac{3}{4}$ "
 Length of slot $5\frac{1}{16}$ " x $\frac{5}{32}$ " for No. 6 Round Head Screws
 Length overall $6\frac{1}{16}$ "
 Width of arm $\frac{1}{2}$ "
 Clip: Two holes countersunk for No. 5 Flat Head Screws

**WK627 Lid and Fall Support (Small Size)**

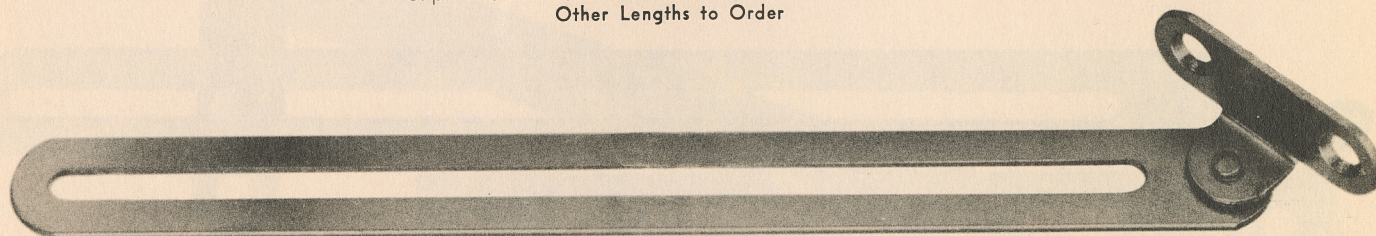
Reversible. Can be used Right or Left Hand
 Center of rivet to end $4\frac{1}{8}$ "
 Length of slot $3\frac{7}{16}$ " x $\frac{5}{32}$ " for No. 6 Round Head Screw
 Length overall $4\frac{5}{16}$ "
 Width of arm $\frac{7}{16}$ "
 Clip: Two holes countersunk for No. 6 Flat Head Screws

WK627 Lid and Fall Support (Large Size)

Reversible. Can be used Right or Left Hand
 Center of rivet to end $5\frac{5}{16}$ "
 Length of slot $5\frac{1}{16}$ " x $\frac{5}{32}$ " for No. 6 Round Head Screw
 Length overall $6\frac{1}{4}$ "
 Width of arm $\frac{7}{16}$ "
 Clip: Two holes countersunk for No. 6 Flat Head Screws

**WK624 Lid and Fall Support**

Not Reversible. Made Right and Left Hand
 Center of rivet to end 6"
 Length of slot $5\frac{3}{8}$ " x $\frac{7}{32}$ " for No. 10 Round Head Screw
 Length overall $6\frac{5}{16}$ "
 Width of arm $\frac{5}{8}$ "
 Clip: Two holes countersunk for No. 6 Flat Head Screws
Other Lengths to Order

**WK620 Lid and Fall Support**

Reversible. Can be used Right or Left Hand
 Center of rivet to end $6\frac{3}{8}$ "
 Length of slot $5\frac{3}{4}$ " x $\frac{3}{16}$ " for No. 10 Round Head Screw
 Length overall $6\frac{7}{16}$ "
 Width of arm $\frac{5}{8}$ "
 Clip: Two holes countersunk for No. 6 Flat Head Screws
Also Furnished in 10" and 12" Lengths

ILLUSTRATIONS ACTUAL SIZE

LID AND FALL SUPPORTS



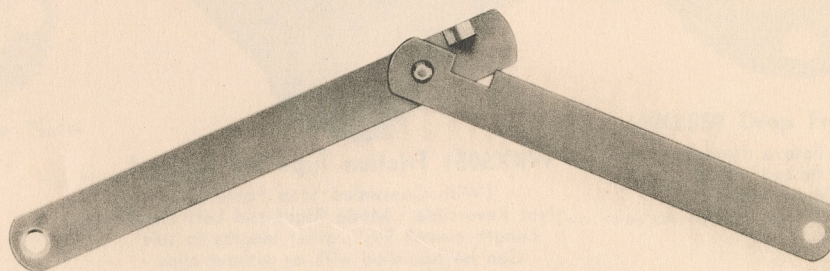
WK609 Right Hand
Full Size

WK 609 Folding Leaf Support

Not Reversible. Made Right and Left Hand
Can be furnished with or without clip
Length overall 6 1/2" From Center to Center of end rivets 6"
Clip: Two holes each clip countersunk for No. 5 Flat Head Screws
Has Friction Locking Feature

WK2745 Lid and Fall Support

Not Reversible. Made Right and Left Hand
Center to Center measurements from end rivets 7"
Two holes each clip countersunk for No. 8 Flat Head Screws



One-half Size

WK2288 Lid and Fall Support

Reversible. Can be used Right and Left Hand
Length overall 9 1/4"
Material used 5/8" x .065
Screws: One hole each end countersunk for No. 6 Flat Head Screws

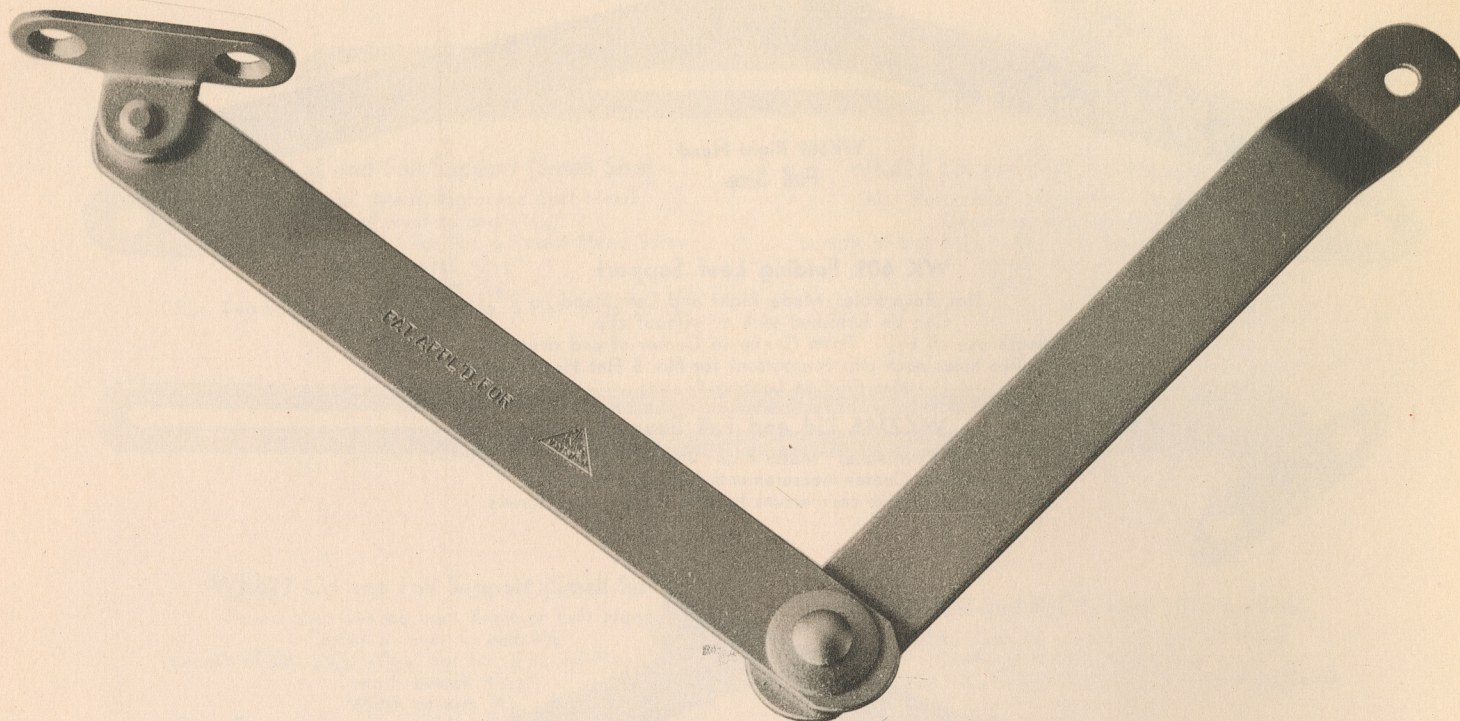


WK1557 Left Hand
Full Size

WK1557 Lid and Fall Support (Ornamental Design)

Not Reversible. Made Right and Left Hand
Length overall 6 1/2"
Clip: Two holes each clip countersunk for No. 4 Flat Head Screws

LID AND FALL SUPPORTS



WKX5051 Friction Type Lid Support

(With Concealed Stop Feature)
 Not Reversible. Made Right and Left Hand
 Length overall 9 1/2", other lengths to suit
 Can be furnished with or without clips
 With or without offset arm

ILLUSTRATIONS ACTUAL SIZE

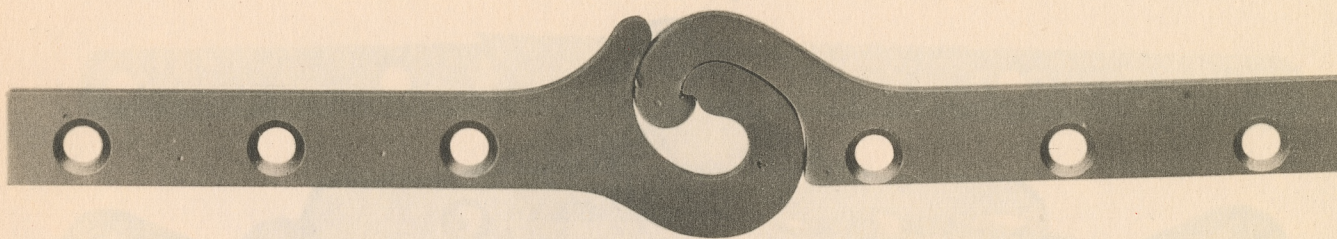


WK2619 Right Hand

WK2619 Lid and Fall Support

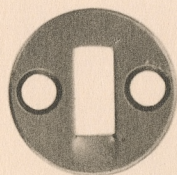
Not Reversible. Made Right and Left Hand
 One Flat and One Right Angle Clip
 Length overall 6 3/8", other lengths to order
 Clips: Two holes each countersunk for No. 6 Flat Head Screws

DROP FRONT DRAWER SET

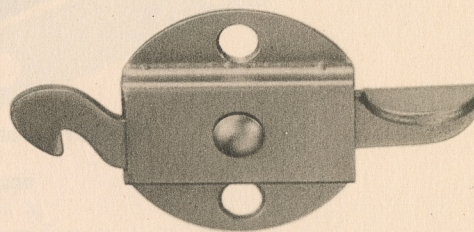
**WK2558 Flat Knuckle Hinge**

Length overall $6\frac{7}{8}$ "
 With of Arms $\frac{1}{2}$ "
 Width of Knuckle overall $1\frac{3}{16}$ "
 Thickness of Metal $\frac{3}{32}$ "
 Six holes countersunk for No. 6 Flat Head Screws

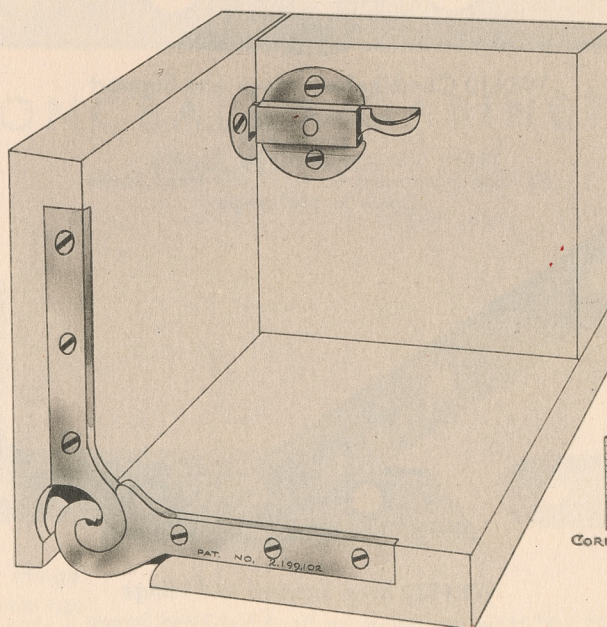
ILLUSTRATIONS ACTUAL SIZE

**WK2560 Strike Plate**

Diameter $\frac{7}{8}$ "
 Two holes countersunk for No. 4 Flat Head Screws

**WK2559 Drop Front Catch**

Length overall $2\frac{7}{16}$ "
 Width overall $1\frac{5}{16}$ "
 Height overall $\frac{3}{8}$ "
 Two holes countersunk for No. 4 Flat Head Screws

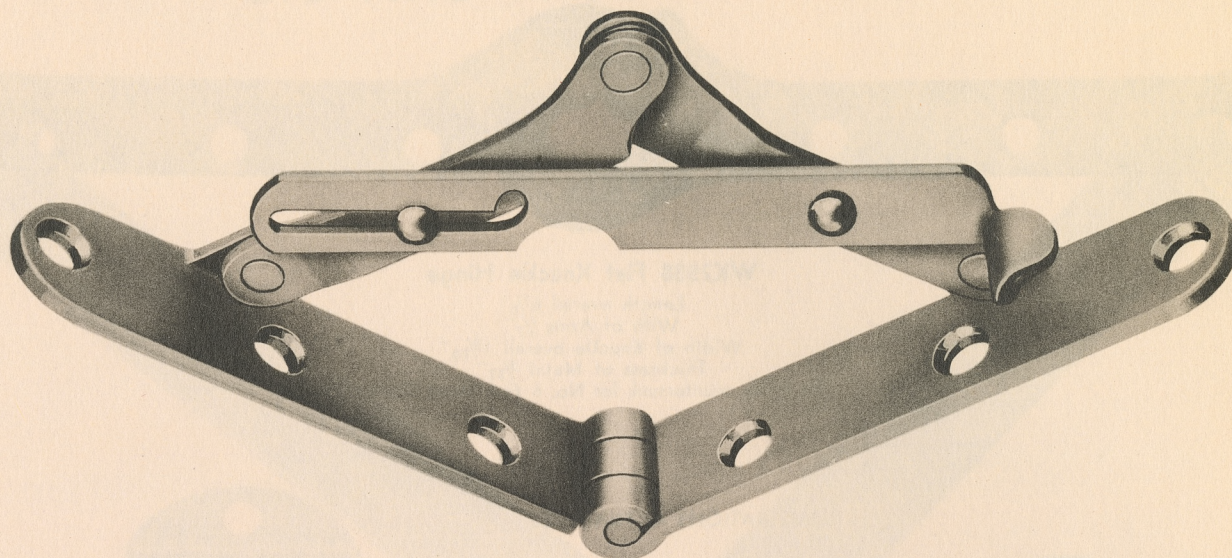


CORNER DETAIL

Installation WK2558, WK2559, WK2560

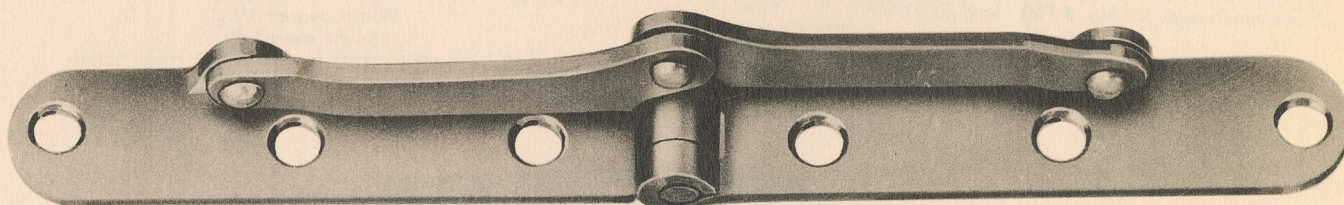
COMBINATION HINGE AND SUPPORT

For Drop Front Drawers



WK2310 Combination Hinge, Support and Lock

For Drop Drawer Fronts
Made Right and Left Hand
Length overall $6\frac{5}{16}$ "
Width overall $\frac{3}{4}$ "
Six holes countersunk for No. 7 Flat Head Screws
Opens to 178° angle



WK610 Combination Hinge and Support

For Drop Fronts
Length overall $6\frac{5}{16}$ "
Width overall $\frac{3}{4}$ "
Six holes countersunk for No. 7 Flat Head Screws
Opens to 178° angle

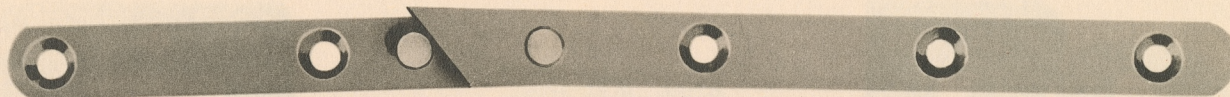


WK1522 Stop Support and Hinge

Holes countersunk for No. 5 Flat Head Screws
Long Leaf overall length $4\frac{1}{4}$ "
Stop Angle overall length 2"
Not Reversible. Made Right and Left Hand

ILLUSTRATIONS ACTUAL SIZE

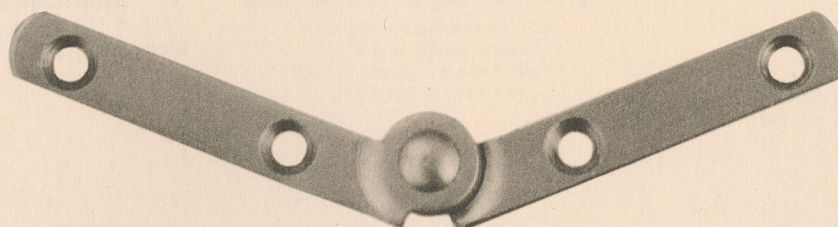
SUPPORT HINGES



Right Hand

WK2629-30 Cabinet Stop Hinge

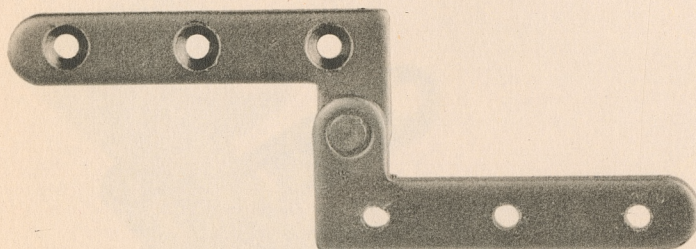
Length overall $6\frac{1}{4}$ "
 Center of joint to end of long leaf $3\frac{1}{2}$ "
 Center of joint to end of short leaf $2\frac{3}{4}$ "
 Both leaves $\frac{3}{8}$ " wide
 Five holes countersunk for No. 5 Flat Head Screws

**WK2552 Cabinet Stop Hinge**

Overall length of arm $4\frac{1}{2}$ " Width $\frac{3}{8}$ "
 Four holes countersunk for No. 6 Flat Head Screws
 NOTE: If larger size of above hinge is wanted specify our No. 2729
 Overall length of arm 6" x $\frac{3}{8}$ "

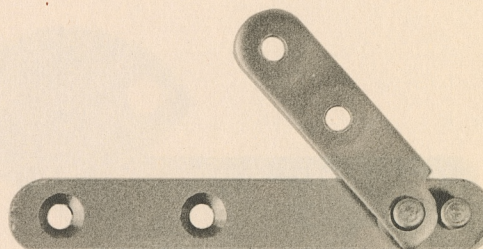
SEMI-CONCEALED CABINET HINGES

REGULARLY MADE IN STEEL

**G95 Hinge**

(Separable type)

Six holes countersunk for No. 4 Flat Head Screws

**G56 Stop Hinge**

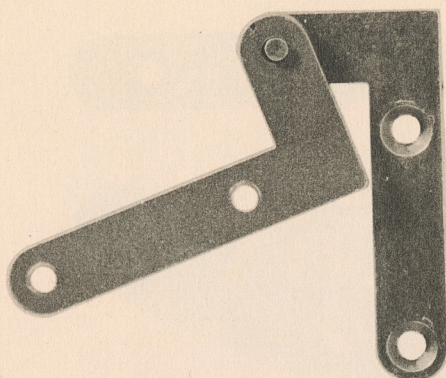
(Separable type)

Four holes countersunk for No. 4 Flat Head Screws

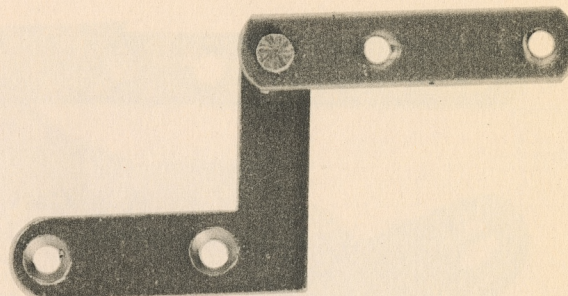
ILLUSTRATIONS ACTUAL SIZE

SEMI-CONCEALED CABINET HINGES

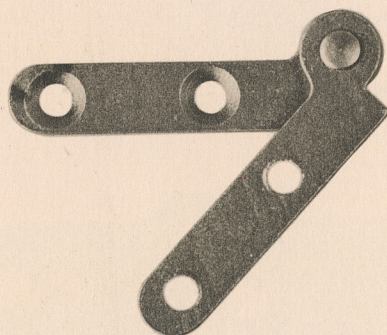
REGULARLY MADE IN STEEL



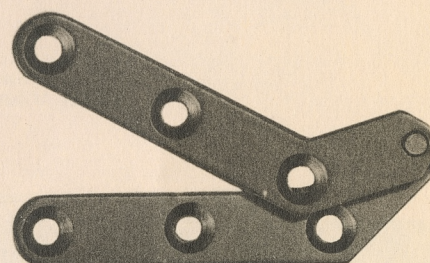
K88 Hinge
(Separable type)
Four holes countersunk for
No. 5 Flat Head Screws
(K442 same hinge riveted)



H877 Hinge
(Separable type)
Four holes countersunk for
No. 4 Flat Head Screws
Made Right and Left Hand

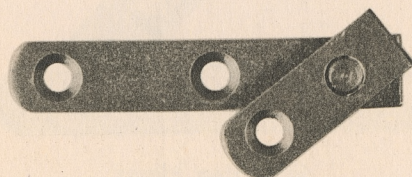


K20 Hinge
Four holes countersunk for
No. 6 Flat Head Screws

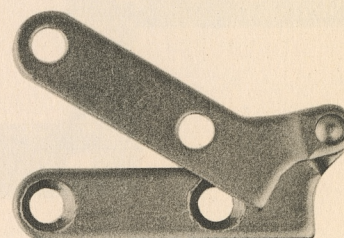


H272 Hinge
(Separable type)
Six holes countersunk for
No. 5 Flat Head Screws

ILLUSTRATIONS ACTUAL SIZE



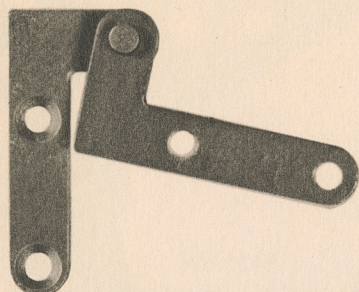
G849-G850 Hinge
(Separable type)
Three holes countersunk for
No. 4 Flat Head Screws



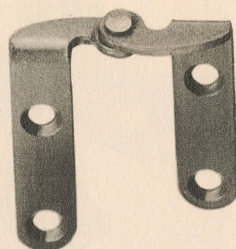
H435 Hinge
Four holes countersunk for
No. 6 Flat Head Screws

SEMI-CONCEALED CABINET HINGES

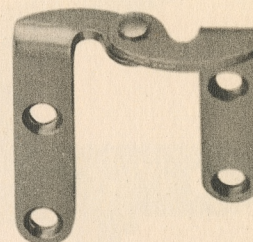
REGULARLY MADE IN STEEL



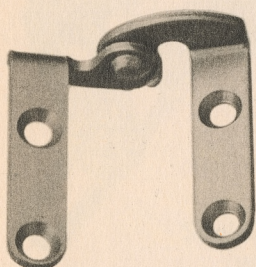
WK1595
Semi-Concealed Cabinet Hinge
(Separable type)
Four holes countersunk for
No. 4 Flat Head Screws



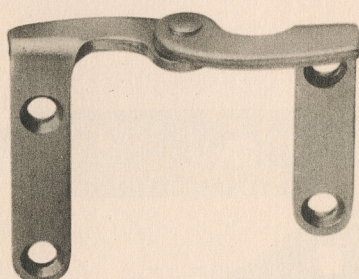
WK1855
Semi-Concealed Cabinet Hinge
Four holes countersunk for
No. 3 Flat Head Screws
Permits doors to open flush
with front of cabinet



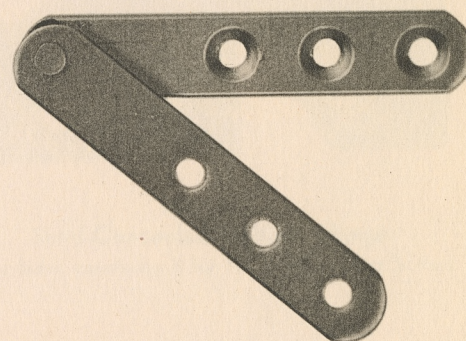
WK1888
Semi-Concealed Cabinet Hinge
Same as WK1855 except larger



WK1896
Semi-Concealed Cabinet Hinge
Same as WK1888 with stop

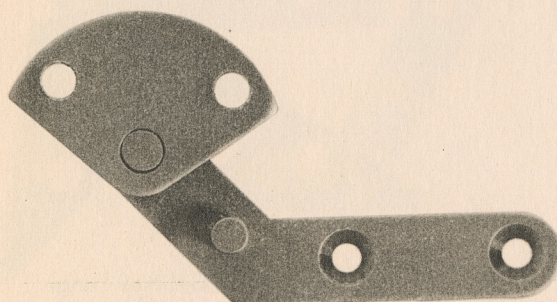


WK1946
Semi-Concealed Cabinet Hinge
Four holes countersunk for
No. 4 Flat Head Screws
Same as WK1888 except larger

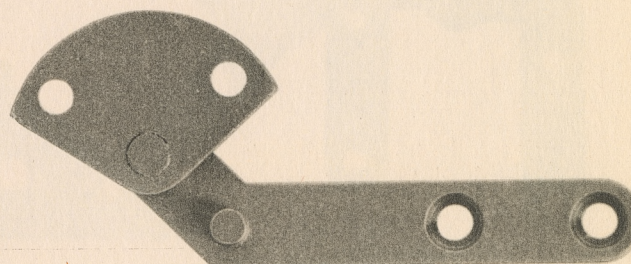


WK1738
Cabinet Hinge
Six holes countersunk for
No. 6 Flat Head Screws

ILLUSTRATIONS ACTUAL SIZE



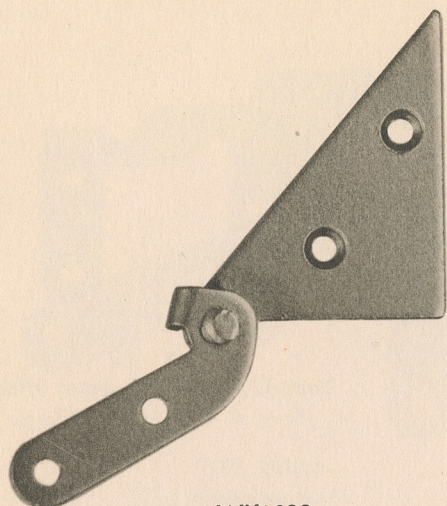
WK2247 Semi-Concealed Cabinet Hinge
Four holes countersunk for No. 6 Flat Head Screws
With stop



WK2672 Semi-Concealed Cabinet Hinge
Four holes countersunk for No. 6 Flat Head Screws
Same as No. 2247 except larger

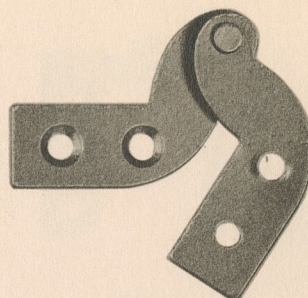
SEMI-CONCEALED CABINET HINGES

REGULARLY MADE IN STEEL



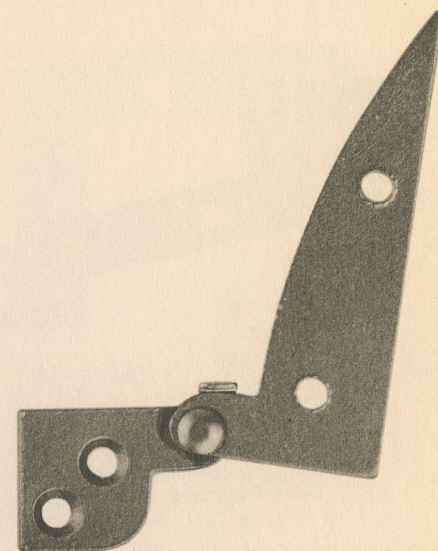
WK1833
Semi-Concealed Cabinet Hinge

(With Stop Feature)
Opens to 180°
Four holes countersunk for
No. 4 Flat Head Screws
Not Reversible. Made Right
and Left Hand



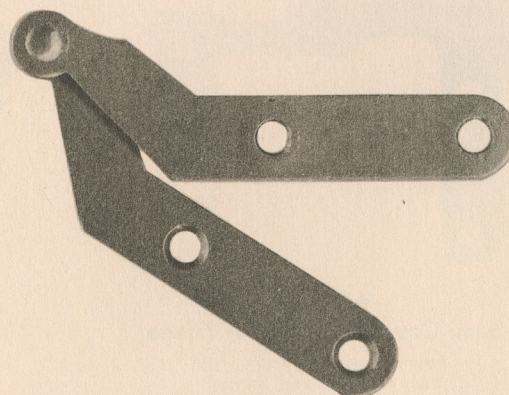
WK1806
Semi-Concealed Cabinet Hinge

(Separable type)
Four holes countersunk for
No. 4 Flat Head Screws
Not Reversible. Made Right
and Left Hand



WK1781
Semi-Concealed Cabinet Hinge

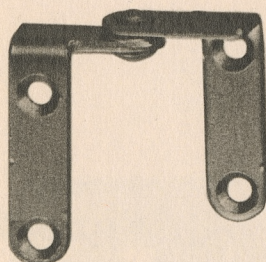
(With Stop Feature)
Four holes countersunk for
No. 5 Flat Head Screws
Not Reversible. Made Right
and Left Hand



WK1660
Semi-Concealed Cabinet Hinge

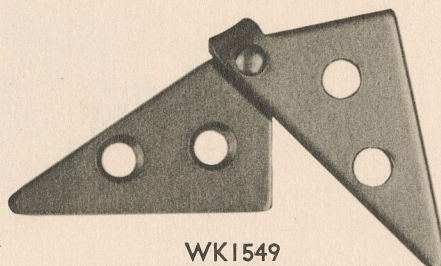
Four holes countersunk for
No. 5 Flat Head Screws

ILLUSTRATIONS ACTUAL SIZE



WK1768
Semi-Concealed Cabinet Hinge

Four holes countersunk for
No. 4 Flat Head Screws
Not Reversible. Made Right
and Left Hand



WK1549
Semi-Concealed Cabinet Hinge

(With Stop Feature)
Four holes countersunk for
No. 5 Flat Head Screws
Not Reversible. Made Right
and Left Hand

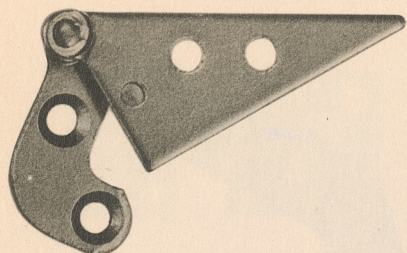


WK1549
Semi-Concealed Cabinet Hinge

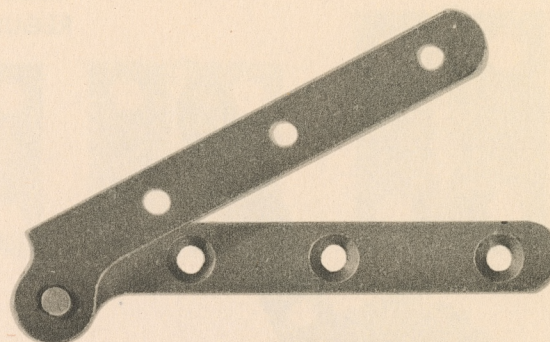
Four holes countersunk for
No. 5 Flat Head Screws
Not Reversible. Made Right
and Left Hand

SEMI-CONCEALED CABINET HINGES

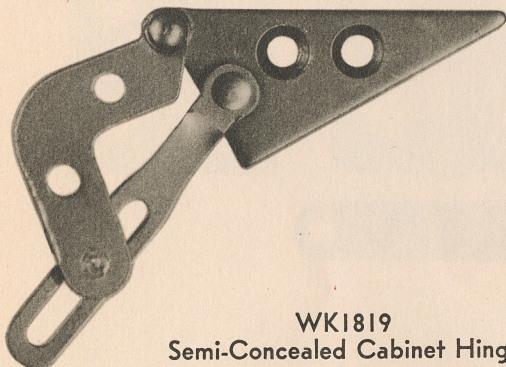
REGULARLY MADE IN STEEL



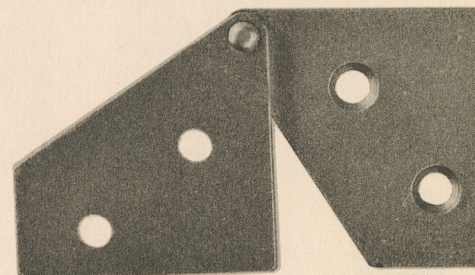
WK1819
Semi-Concealed Cabinet Hinge
Four holes countersunk for
No. 6 Flat Head Screws



WK1668
Semi-Concealed Cabinet Hinge
(Separable type)
Six holes countersunk for No. 5 Flat Head Screws
Not Reversible. Made Right and Left Hand

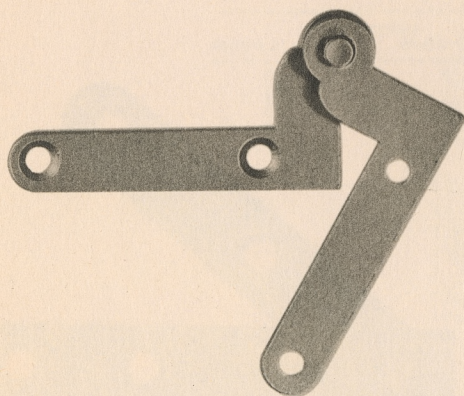


WK1819
Semi-Concealed Cabinet Hinge
(With Sliding Stop Feature)
Four holes countersunk for No. 6 Flat Head Screws

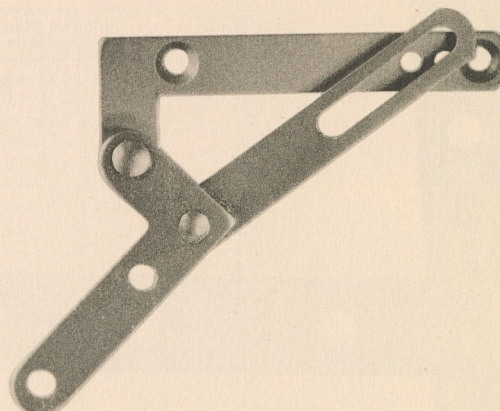


WK1772
Semi-Concealed Cabinet Hinge
Four holes countersunk for No. 5 Flat Head Screws

ILLUSTRATIONS ACTUAL SIZE



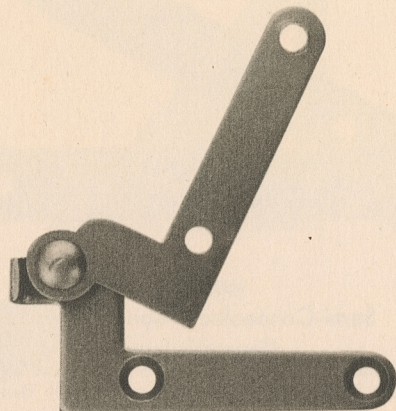
WK1844
Semi-Concealed Cabinet Hinge
(Separable type)
Four holes countersunk for No. 4 Flat Head Screws
Not Reversible. Made Right and Left Hand



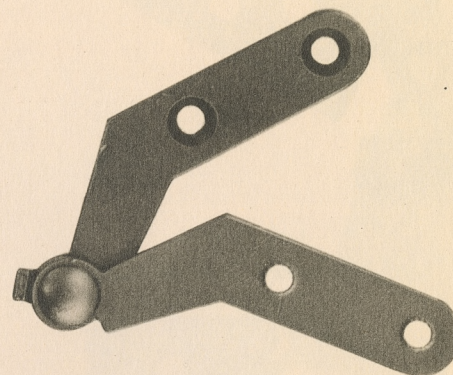
WK1700
Separable Stop Hinge
Four holes countersunk for No. 4 Flat Head Screws
Sliding stop arm anchored with one
No. 3 Flat Head Screw
Not Reversible. Made Right and Left Hand

SEMI-CONCEALED CABINET HINGES

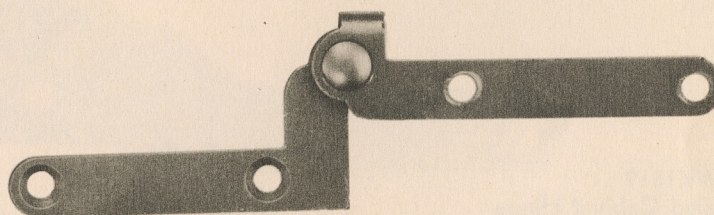
With Stops
REGULARLY MADE IN STEEL



WK1821 Semi-Concealed Cabinet Hinge
Four holes countersunk for No. 4 Flat Head Screws

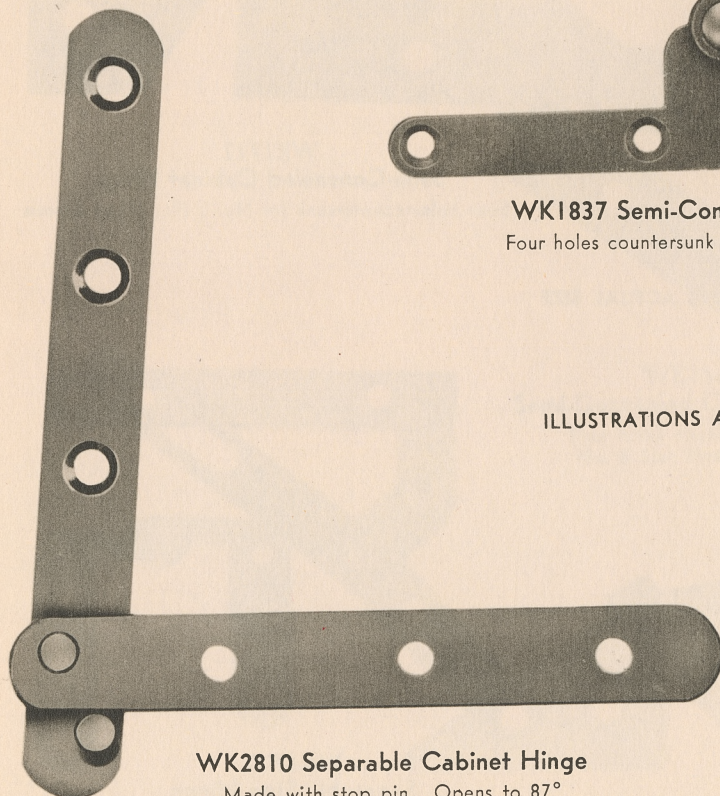


WK1828 Semi-Concealed Cabinet Hinge
Four holes countersunk for No. 5 Flat Head Screws

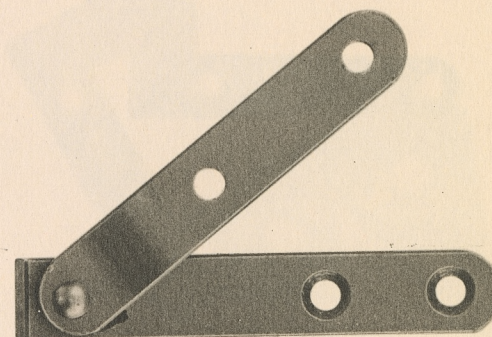


WK1837 Semi-Concealed Cabinet Hinge
Four holes countersunk for No. 4 Flat Head Screws

ILLUSTRATIONS ACTUAL SIZE



WK2810 Separable Cabinet Hinge
Made with stop pin. Opens to 87°
Long leaf overall length 4 1/8"
Short leaf overall length 3 5/8"
Six holes countersunk for No. 6 Flat Head Screws



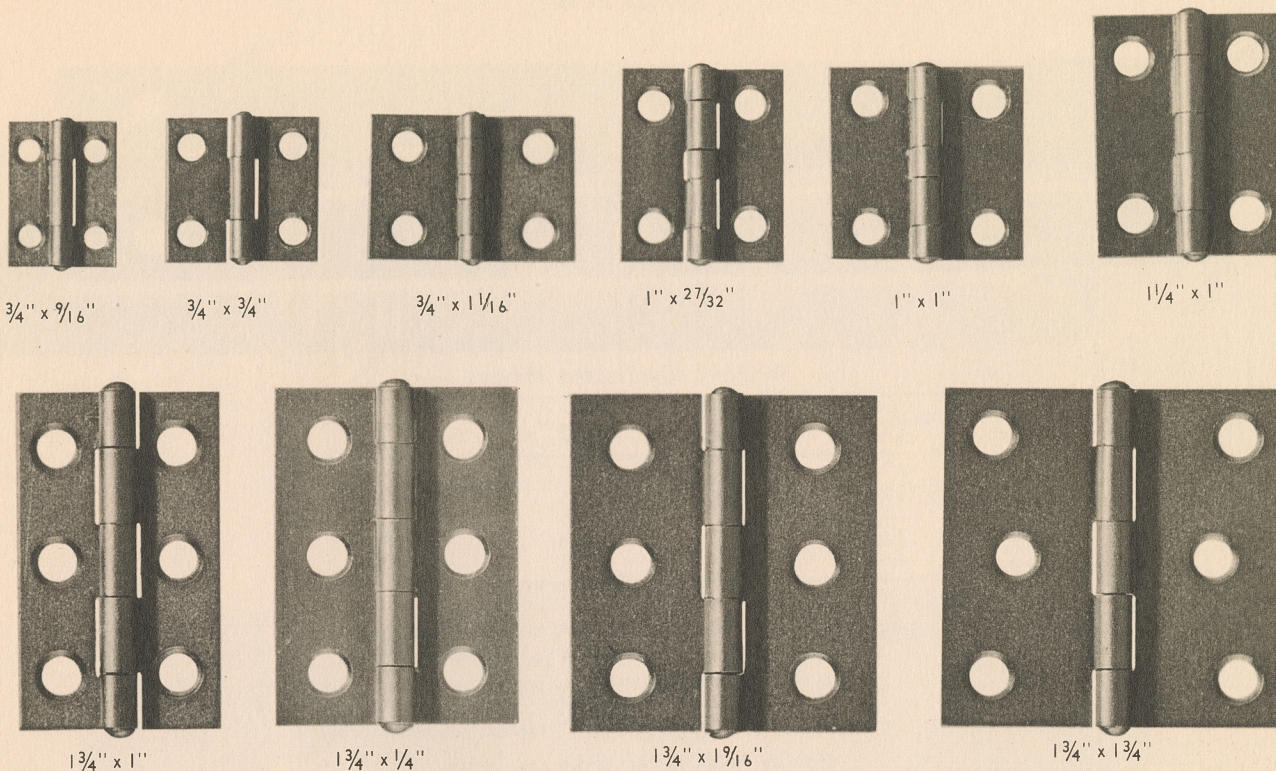
WK1567 Semi-Concealed Cabinet Hinge
Four holes countersunk for No. 5 Flat Head Screws

MADE RIGHT OR LEFT HAND

Fast Pin

NARROW CABINET BUTT HINGES

Plain Tips



ILLUSTRATIONS ACTUAL SIZE

WROUGHT STEEL

MC-300 Plain Steel or Plated

Hinges on this page should be ordered from The Weber-Knapp Company

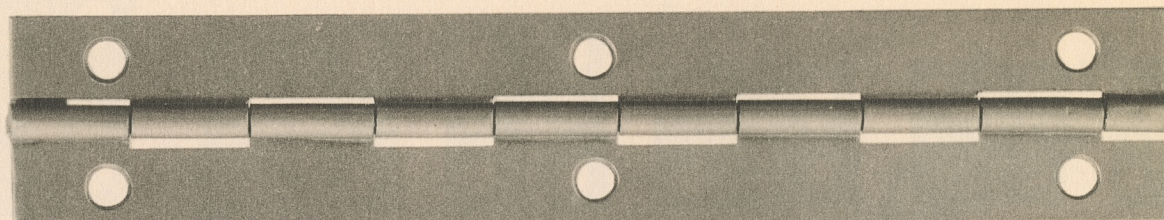
Length of Joint	Size (Inches) Width Open	Gauge of Metal	Quantity and Size of Screws	Dozen Pairs in a Case
$\frac{3}{4}$	$\frac{9}{16}$.028	4— $\frac{3}{8} \times 2$	300
$\frac{3}{4}$	$\frac{3}{4}$.028	4— $\frac{3}{8} \times 2$	300
$\frac{3}{4}$	$1\frac{1}{16}$.032	4— $\frac{3}{8} \times 3$	300
1	$2\frac{7}{32}$.032	4— $\frac{3}{8} \times 3$	300
1	1	.032	4— $\frac{3}{8} \times 3$	300
1	$1\frac{5}{16}$.032	4— $\frac{1}{2} \times 4$	200
$1\frac{1}{4}$	1	.035	4— $\frac{1}{2} \times 4$	200
$1\frac{1}{4}$	$\frac{1}{8}$.035	4— $\frac{1}{2} \times 4$	200
$1\frac{1}{4}$	$1\frac{5}{16}$.035	4— $\frac{1}{2} \times 4$	200
$1\frac{1}{2}$	1	.037	4— $\frac{1}{2} \times 3$	200
$1\frac{1}{2}$	$\frac{1}{4}$.037	4— $\frac{1}{2} \times 4$	200
$1\frac{1}{2}$	$1\frac{1}{2}$.037	4— $\frac{1}{2} \times 4$	100
$1\frac{3}{4}$	1	.040	6— $\frac{5}{8} \times 5$	100
$1\frac{3}{4}$	$\frac{1}{4}$.040	6— $\frac{5}{8} \times 5$	100
$1\frac{3}{4}$	$1\frac{9}{16}$.040	6— $\frac{5}{8} \times 5$	100
$1\frac{3}{4}$	$\frac{3}{16}$.040	6— $\frac{5}{8} \times 5$	100
2	$\frac{3}{8}$.042	6— $\frac{5}{8} \times 5$	100
2	$\frac{3}{4}$.042	6— $\frac{5}{8} \times 5$	100
$2\frac{1}{2}$	$1\frac{5}{8}$.045	6— $\frac{3}{4} \times 6$	50

Packed bulk, without screws unless otherwise specified.

For other types of Butt Hinges refer to Weber-Knapp Catalog No. 41

CONTINUOUS HINGES

BRASS PINS



1 1/16" Size Shown

WK1342 Continuous Hinges

Size Width Open (Inches)	Length of Knuckles (Inches)	Gauge of Metal	Size of Wood Screws
* 1"	5/8"	.035	1/2" x No. 4
* 1 1/16"	5/8"	.035	1/2" x No. 4
1 1/16"	5/8"	.045	1/2" x No. 4
1 1/4"	5/8"	.045	1/2" x No. 4
1 1/2"	5/8"	.045	1/2" x No. 4

*Considered Standard sizes.

Available in Wrought Steel, Wrought Brass and White Metal.

Screw holes spaced 2" apart, other spacings on order.

Can be obtained with extra clearance in joints for painting; also blank, without holes.

Regularly furnished in lengths up to 72"; longer lengths on order.

Specify Finish, Metal, Width and Length.

BULLET CATCHES



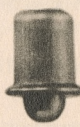
K5369
3/8" Diameter
This Bullet Catch has a toggle or rolling action giving smoother operation and permitting closer tolerances.



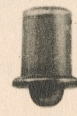
3911
3/8" Diameter
This catch equipped with revolving ball instead of bullet.



3914
3/8" Diameter



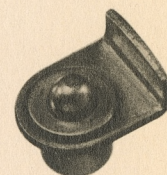
F248
5/16" Diameter



4625
1/4" Diameter

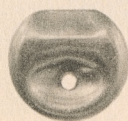


G271
3/8" Diameter
Case Has Open Bottom



4201
3/8" Diameter
Stop Catch

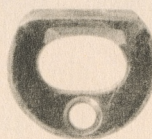
BE SURE TO SPECIFY STRIKE PLATE DESIRED.
2678 AND 4630 ARE STANDARD.



2678
5/8" Diameter



4630
1/2" Diameter



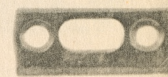
3240
3/4" Diameter



4629
5/8" Diameter



G51



4739

ILLUSTRATIONS ACTUAL SIZE

CABINET DOOR EQUALIZER

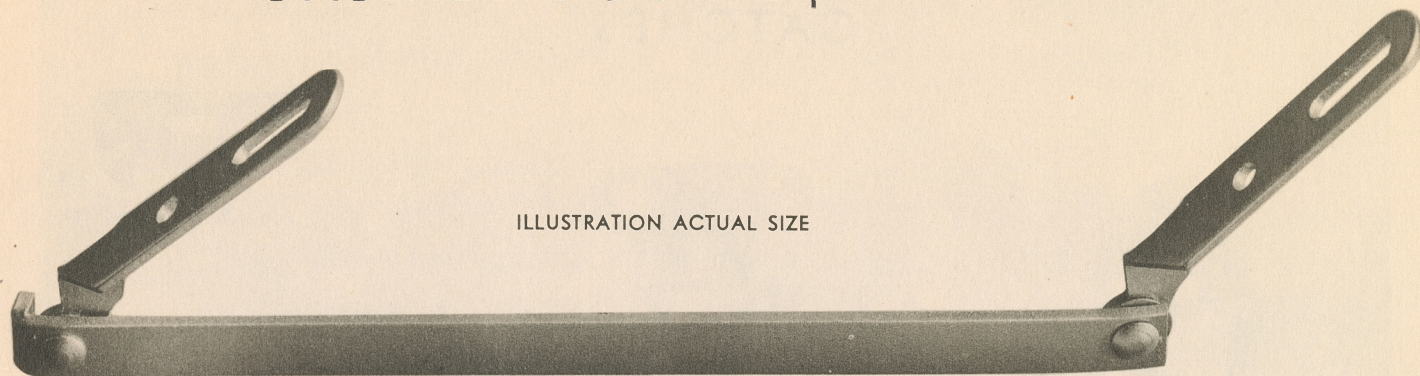


ILLUSTRATION ACTUAL SIZE

WK2786 Equalizer

(Left Hand Illustrated)

Made Right and Left Hand

This equalizer designed to permit multiple doors
to open easily and smoothly

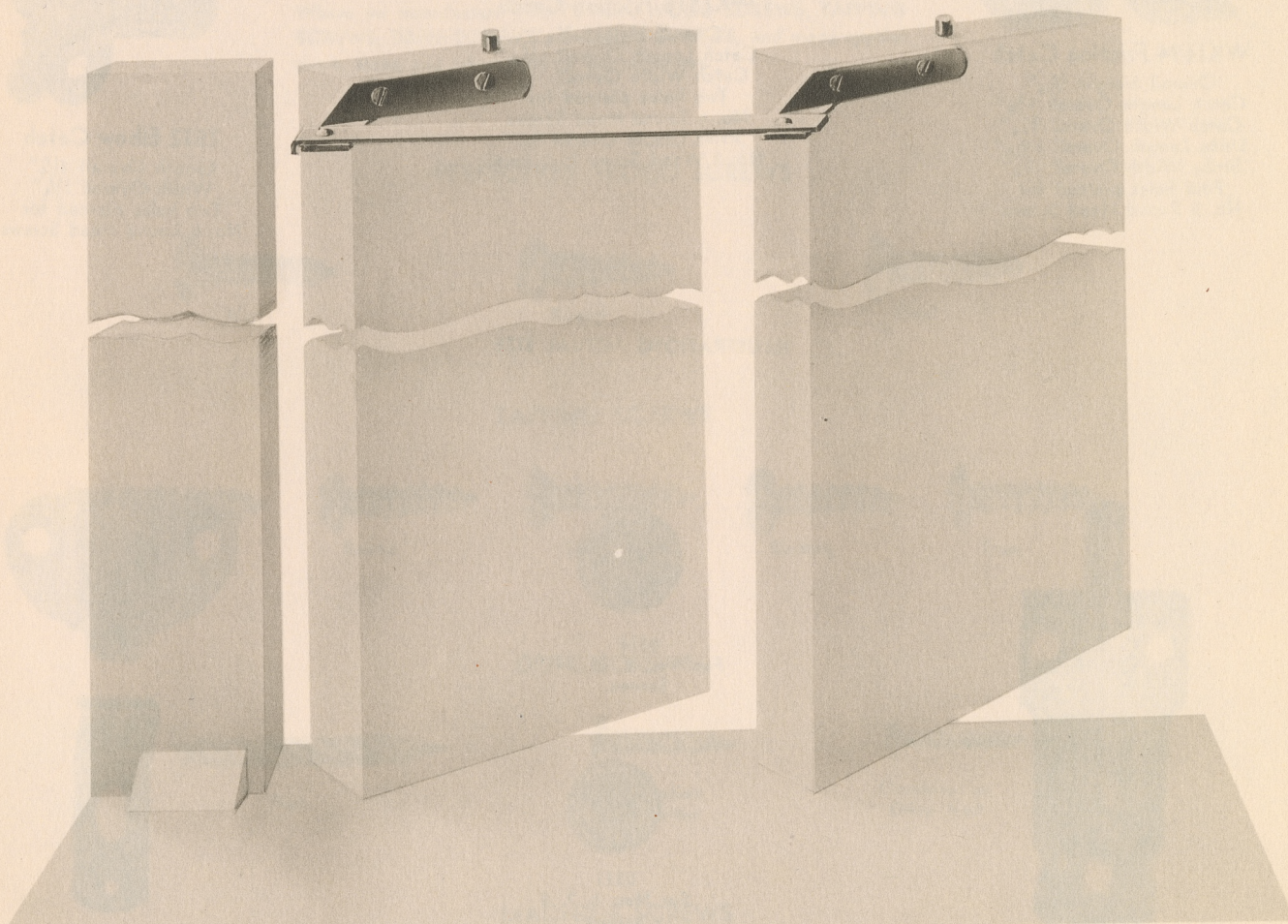
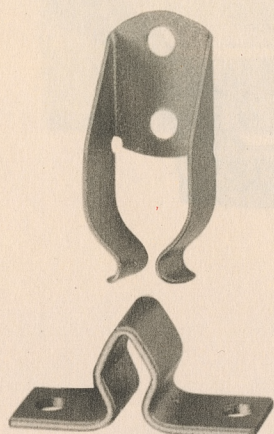
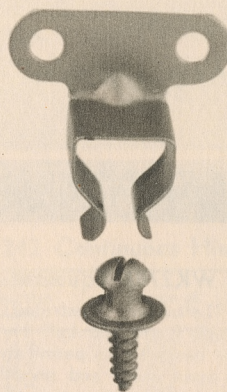


Illustration shows WK2786 Equalizer installed on multiple door
cabinet. Above view is from the back or inside of cabinet.

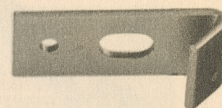
CATCHES

**WK1694 Friction Catch**

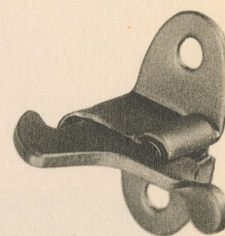
Overall Height $\frac{7}{16}$ "
 Catch Length Overall $1\frac{3}{8}$ "
 Catch Width Overall $\frac{9}{16}$ "
 Strike Length Overall $1\frac{5}{16}$ "
 Strike Width Overall $\frac{7}{16}$ "
 Four holes pierced for
 No. 5 Round Head Screws

**WK1816 Friction Catch**

Overall Height $\frac{9}{16}$ "
 Catch Length Overall $1\frac{1}{16}$ "
 Catch Width Overall $1\frac{1}{8}$ "
 Two holes pierced for
 No. 6 Round Head Screws
 Strike Length Overall $\frac{7}{8}$ "
 No. 8 Wood Screw $\frac{7}{16}$ " long

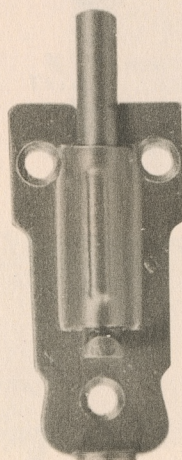
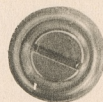
**No. 2835 Strike**

Length Overall $1\frac{3}{32}$ "
 Width Overall $\frac{7}{16}$ "
 Hook projects $\frac{5}{16}$ "
 One hole for $\frac{3}{8}$ " No. 16 Escutcheon Pin
 and one slot for No. 6 Round Head Screw

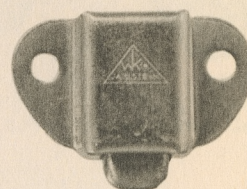
**2532 Elbow Catch**

Length Overall $1\frac{1}{4}$ "
 Width Overall $1\frac{1}{4}$ "
 Two holes pierced for
 No. 6 Round Head Screws

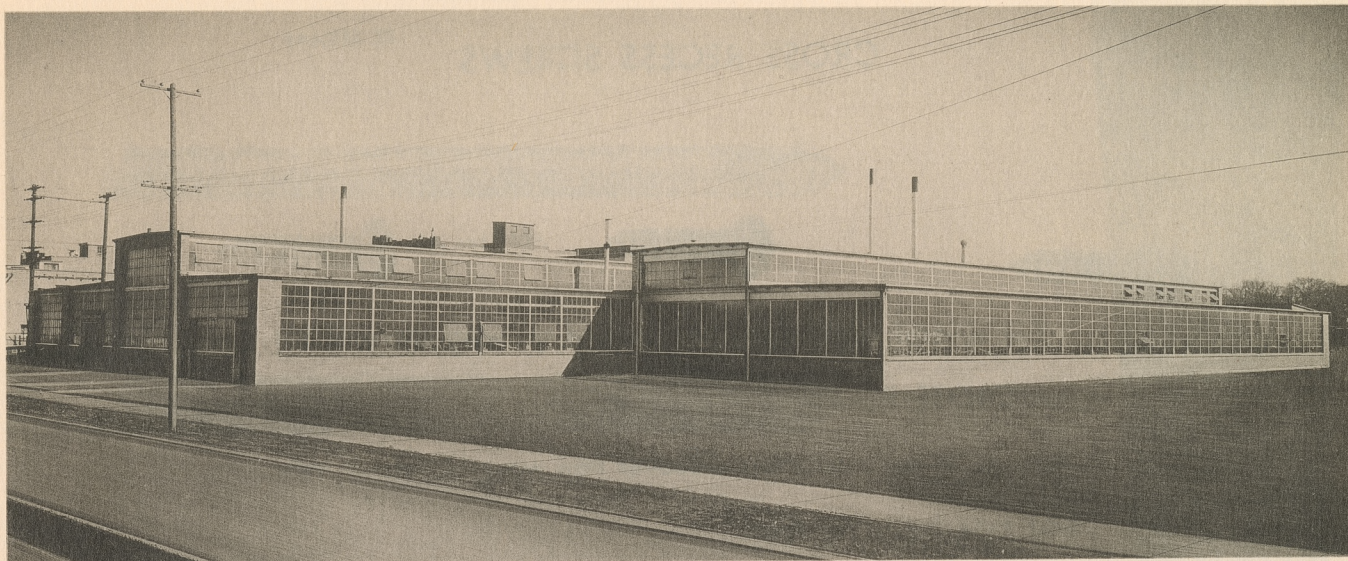
ILLUSTRATIONS ACTUAL SIZE

**H534 Bolt
WROUGHT****6676**
For Nos. 9, 10, 11
Screws**0311**
For Nos. 6, 7, 8
Screws

Finishing Washers

**WK2494**
Cabinet Catch

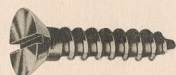
For other styles of strikes and catches
 refer to Weber-Knapp Co. Catalog No. 41



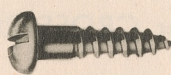
STEVENS STREET SCREW PLANT

Where we manufacture PERFECTION WOOD SCREWS, TAPPING SCREWS, DRIVE SCREWS, MACHINE SCREWS, and many special rivets, studs, and other parts for our customers.

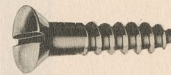
PERFECTION WOOD SCREWS



Flat

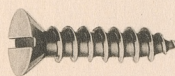


Round

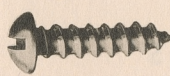


Oval

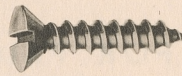
TAPPING SCREWS



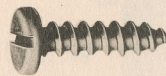
Flat



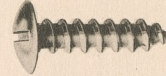
Round



Oval



Binding



Truss

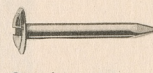
DRIVE SCREWS



Flat

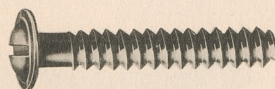


Combination
Drive Screw

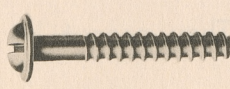


Combination
Drive Nail

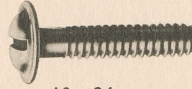
MACHINE SCREWS



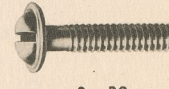
14-14
(For Wood Knobs)



8-16
(For Plastic Pulls)



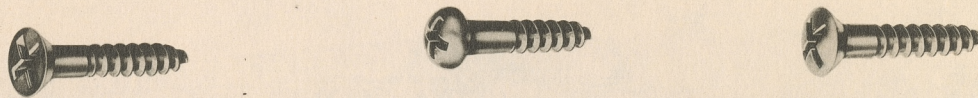
10-24
(For Metal Knobs and Pulls)



8-30
(For Metal Knobs and Pulls)

WRITE FOR PRICES

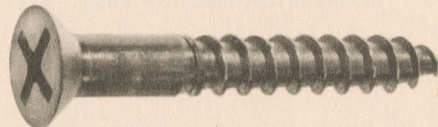
CROSS RECESS SCREWS



For several years there has been a growing demand for our CROSS RECESS SCREWS, and this will undoubtedly increase as our customers discover new ways to save money and time by using them.

Among other advantages, they eliminate slipping, even when driven with the latest and fastest electric screw drivers. They avoid damaged work, increase production speed, and make a neater job.

See next page for CROSS RECESS BITS



WRITE FOR PRICES



For all of our brass screws we use HIGH TEMPER WIRE, which has an exceptionally high tensile strength. In other words, our brass screws are stronger than most Herculoy, Everdur, and steel screws. They cannot be equalled for fine workmanship.



BITS FOR CROSS RECESS SCREWS

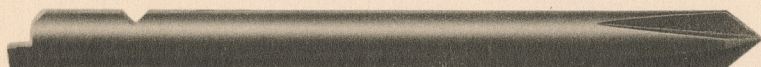
KEELER



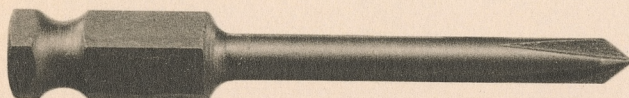
YANKEE 35



YANKEE 30A and 130A



YANKEE 31A and 131A



BLACK AND DECKER 7/16"



BLACK AND DECKER 1/4"



THOR U16



THOR 3-191



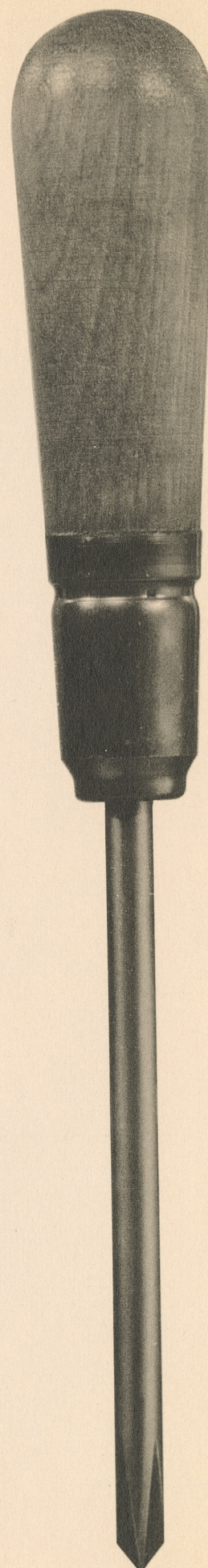
THOR 0-191



THOR 12-250



HAND BRACE



HAND SCREW
DRIVER

ILLUSTRATIONS ACTUAL SIZE

NOTES

NOTES

