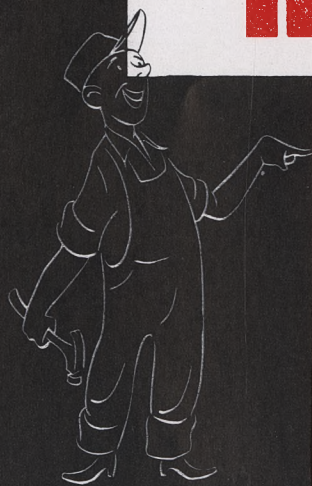


The new
BETTER
way to
frame
doors
and room
openings
for less

kewanee



**STEEL DOOR FRAMES
and ROOM TRIM**

KEWANEE MANUFACTURING COMPANY • KEWANEE, ILLINOIS

frame ROOM OPENINGS

with KEWANEE Steel Door Frames and ROOM TRIM . . .

NOW . . . an ALL NEW and different type of steel door frame with all the features you've ever wanted! Easy installation. Low initial cost. Neat modern trim design. Sturdy construction. Secure anchorage. Available for both Plaster and Dry Wall in full range of sizes.

Only KEWANEE Steel Door Frames Give You All These Features . . .

LOW INITIAL COST

Here's the most economical door frame on the market. Yet, the most attractive. Attains at a fraction of the cost of out-moded and bulky trimming methods, that clean, trim appearance wanted in today's modern and practical maintenance-saving homes.

QUICK, EASY INSTALLATION

Installation is accomplished in one-third the time—no expensive finish carpentry required. No mortising of jambs for hinges and strike—no later trim necessary — no filling of nail holes. Rooms are ready for decorating when the plasterer finishes.

BOTH PLASTER and DRY WALL FRAMES

Available in a wide range of sizes for both Plaster and Dry Wall. Bonderized galvanized finish of Plaster Type Frames prevents rusting and assures perfect paint adhesion. Channel edge of dry-wall frames holds wallboard snugly and neatly. Eliminates all nailing of wallboard around perimeter of frame. Result: a worthwhile saving in nails, nailing time, and labor of filling over nail holes.

RIGID ATTACHMENT

Nail holes are provided every 7" along flanges of frame, assuring secure anchorage to wood stud partition, preventing vibration and eliminating metallic sound.

HANDY PACKAGING

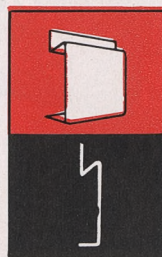
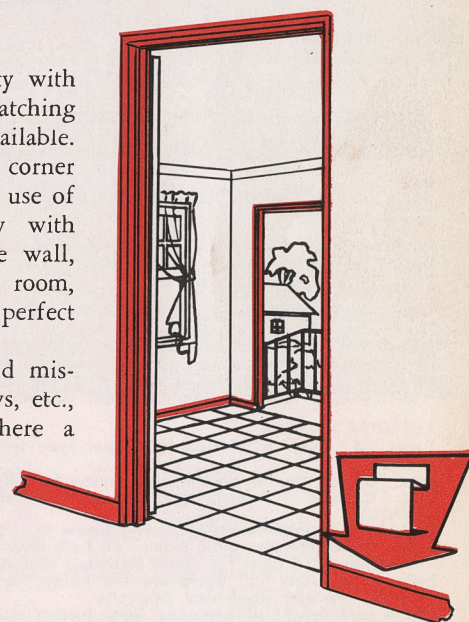
Each frame is packed in an individual carton, especially designed to protect it against damage. Type, size, and swing information is stencilled on the carton. Easy to follow installation instructions are included in each carton.



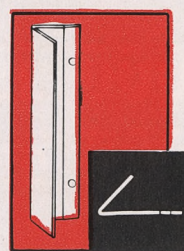
MATCHING METAL BASEBOARD AND METAL TRIM

For additional savings and beauty with *Kewanee Steel Door Frames*, matching metal *Baseboard* and *Trim* are available. The steel baseboard eliminates all corner mitering, filling of nail holes and use of wood plaster grounds necessary with wood baseboard. Flush with the wall, it provides more floor space per room, doesn't catch dust and provides a perfect match for the door frame.

The metal trim is for use around miscellaneous door openings, windows, etc., and nosing for stair railing where a completely harmonious interior trim is desired. Both products, like the Type A Door Frame, are of galvanized bonderized steel.



METAL
BASEBOARD



TYPE A



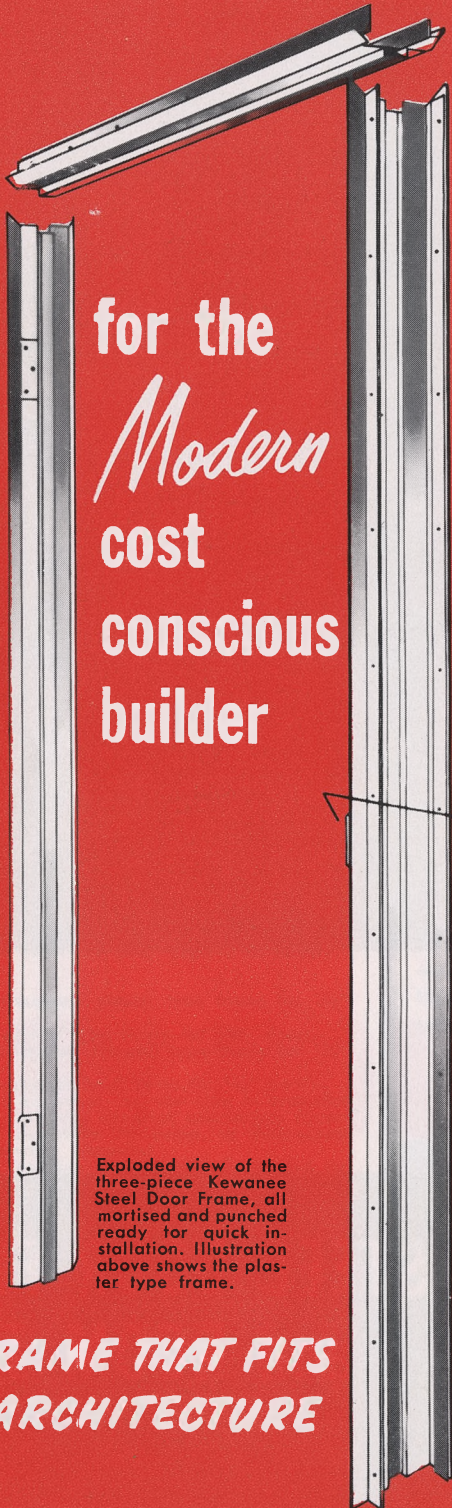
TYPE AW

METAL TRIM

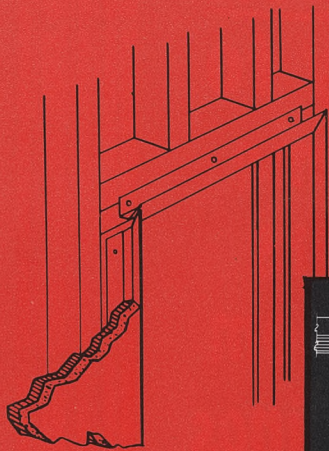
OTHER QUALITY BUILDING PRODUCTS BY **kewanee**

A new low cost way to

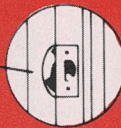
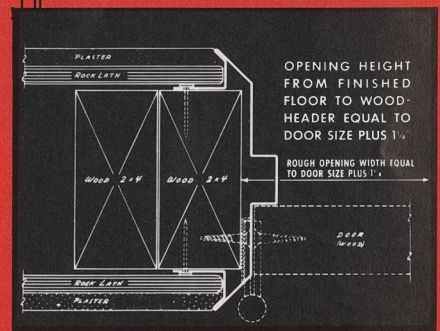
for the
Modern
cost
conscious
builder



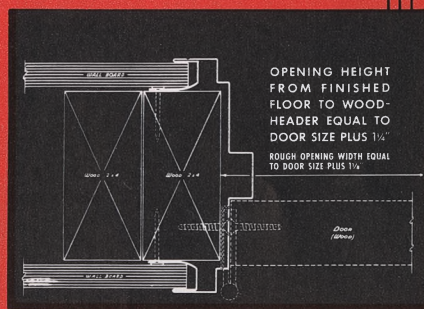
Exploded view of the three-piece Kewanee Steel Door Frame, all mortised and punched ready for quick installation. Illustration above shows the plaster type frame.



FOR PLASTER WALL
(also adaptable for dry wall)



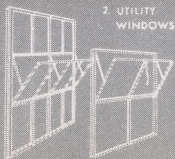
FOR DRY-WALL



**THE FRAME THAT FITS
ANY ARCHITECTURE**

PATENT
PENDING

1. COMMERCIAL
WINDOWS



2. UTILITY
WINDOWS

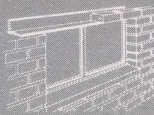


3. MASTER BASEMENT
WINDOWS



4. STANDARD BASEMENT
WINDOWS

5. FORMED STEEL LINTELS



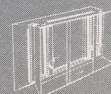
6. FLUE CLEAN-OUT AND
ASHPIT DOORS



7. MORTAR BOXES



8. WINDOW-BUCKS
FOR CONCRETE FORMS



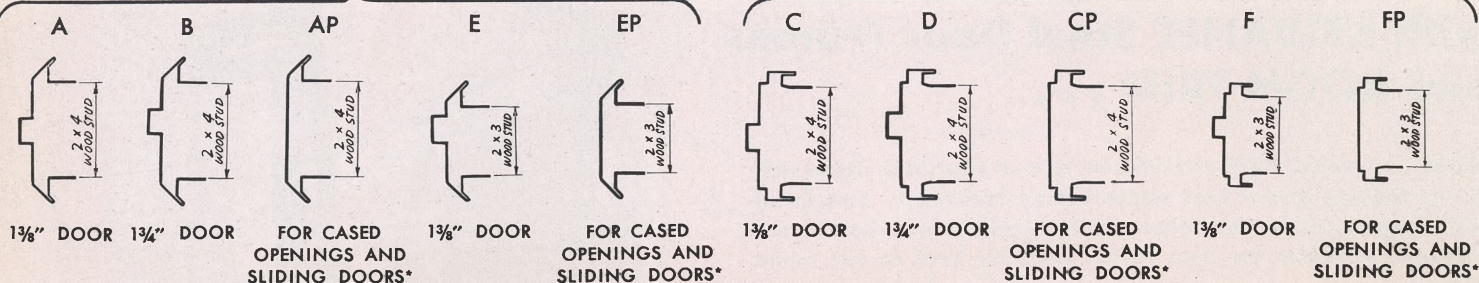
kewanee

PACKAGED DOOR FRAMES & MATCHING ROOM TRIM

DOOR FRAME TYPES

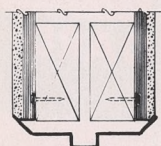
FOR PLASTER WALL (ALSO ADAPTABLE FOR DRY WALL)

FOR DRY WALL



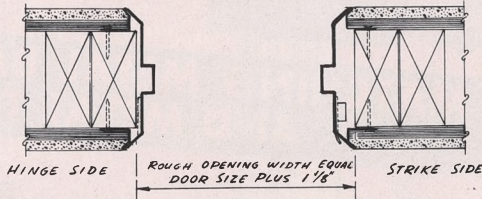
TYPICAL INSTALLATION DETAILS

HEAD SECTION
(STUD PARTITION SHOWN)

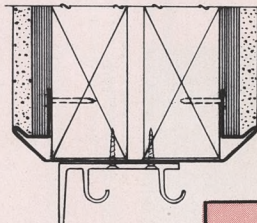


OPENING HEIGHT FROM
FINISHED FLOOR TO WOOD
HEADER: EQUAL DOOR SIZE PLUS 1 1/4"

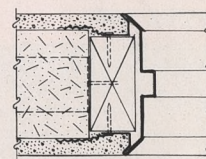
JAMB SECTION
(STUD PARTITION SHOWN)



HEAD SECTION
*TYPICAL HARDWARE FOR
SLIDING DOORS SHOWN



JAMB SECTION
(TILE PARTITION SHOWN)



SPECIFICATIONS

STEEL

.030" cut from highest grade prime sheets.

FINISH

PLASTER TYPE: Galvanized and bonderized.

DRY-WALL TYPE: High grade aluminum primer on all sides.

HARDWARE

Jambs punched and recessed for standard butt hinges. Frames for 1 3/8" doors prepared for two 3 1/2" x 3 1/2" hinges. Frames for 1 3/4" doors prepared for three 3 1/2" x 3 1/2" hinges. Hinges not furnished unless specified, and then at extra cost. Universal type brass strike-plate which will fit practically all standard locksets (with dust-box) applied at factory.

STANDARD TYPES

Types "A" and "E" designate plaster type frame for 1 3/8" doors.

Type "B" designates plaster type frame for 1 3/4" doors.

Type "C" and "F" designates dry-wall type frame for 1 3/8" doors.

Type "D" designates dry-wall type frame for 1 3/4" doors.

Suffix "P" designates plain frame (no door-stop or provision for hinges or strike) for cased openings and sliding doors.

Suffixes "L" and "R" designate the swing, as determined by the method illustrated opposite.

Width and height of Kewanee door frames designated by door dimensions, for example, No. A2068L designates a plaster type frame for 1 3/8" door which is 2'-0" x 6'-8", with a left hand swing.

Standard Kewanee door frames available with both jambs prepared for hinges, for use with double doors and designated by suffix "LR".

INSTALLATION

Kewanee metal door frames are designed for easy installation requiring not more than 15 minutes per unit. Fits snugly over the wood stud. Nail holes provided every 7" along flanges of frame members, assuring secure anchorage to wood stud (See illustration above) preventing vibration and eliminating metallic sound.

SUMMARY

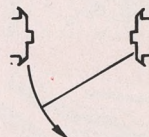
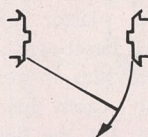
Kewanee steel door frames, matching baseboard and trim have a two-fold purpose—to cut cost and to add more spaciousness with greater beauty to the home or office.

FOR DETAILS AND SPECIFICATIONS OF OTHER
KEWANEE BUILDING PRODUCTS WRITE FOR
OUR COMPLETE CATALOG

SWING OF DOORS

RIGHT HAND SWING

LEFT HAND SWING

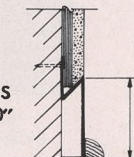


To determine correct hinging, push door away from you as you walk through the opening. The side with the hinges determines the swing.

KEWANEE MATCHING ROOM TRIM

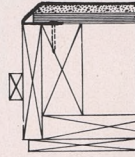
BASEBOARD TYPE "A"

STOCK
LENGTHS
OF 10'-0"

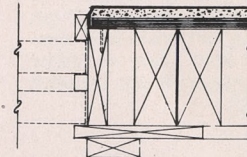


3 1/4" HEIGHT

TRIM TYPE "A"



TRIM TYPE AW



STOCK
LENGTHS
OF 7'-0" &
10'-0"

MAY BE APPLIED AS MOULDING OR PLASTER
STOP AT WINDOWS, DOORS, RAILINGS,
AND VARIOUS EDGES

STOCK SIZES

KEWANEE DOOR FRAMES AVAILABLE
IN THESE STANDARD DOOR SIZES:

WIDTHS	HEIGHTS		
1'-4"	6'-6"	6'-8"	7'-0"
1'-6"	"	"	"
1'-8"	"	"	"
1'-10"	"	"	"
2'-0"	"	"	"
2'-2"	"	"	"
2'-4"	"	"	"
2'-6"	"	"	"
2'-8"	"	"	"
2'-10"	"	"	"
3'-0"	"	"	"

OTHER WIDTHS AND HEIGHTS TO ORDER
INDICATE TYPE AND SWING OF DOORS
WHEN ORDERING KEWANEE
METAL DOOR FRAMES

TYPICAL INSTALLATIONS

.030 GALVANIZED — BONDERIZED STEEL SHIPPED IN CARTONS
SPECIAL HEIGHTS TO ORDER

KEWANEE MANUFACTURING COMPANY • KEWANEE, ILLINOIS