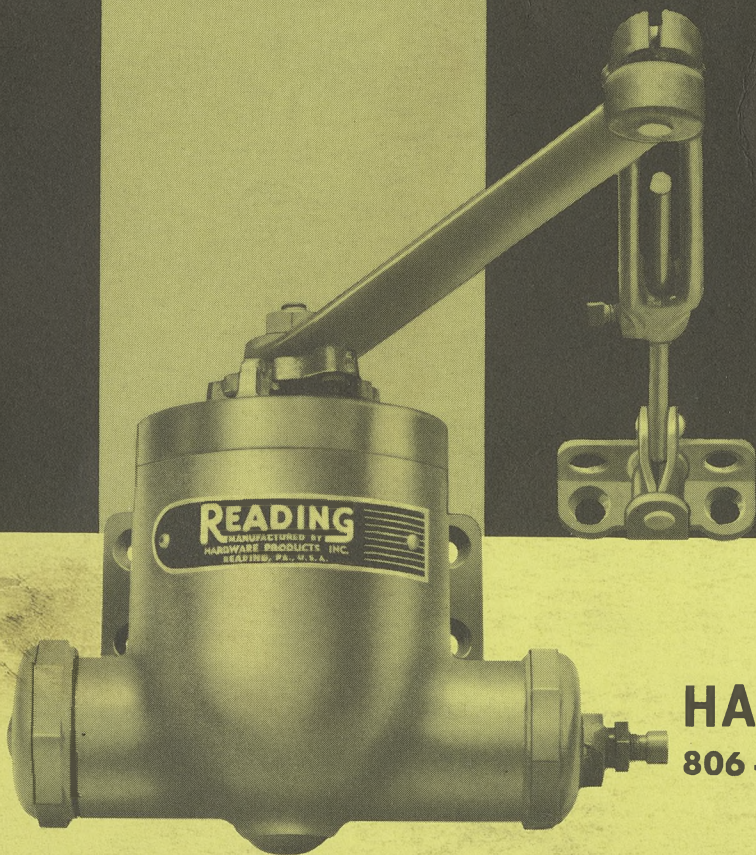


WINTER'S HARDWARE CO.  
400 N. NINTH ST. • 620 N. FRONT ST.  
READING, PA.

# READING

*a  
Great Name  
in  
Door Closers !*



**HARDWARE PRODUCTS, INC.**  
806-812 NORTH 6TH ST., READING, PA.



Reading Door Closers have won the acclaim of leading architects and contractors throughout the world. Their quality, efficiency and durability have been proved through the years . . . many Reading Door Closers are still in use today after thirty and forty years of operation under severe conditions.

**READING**  
DOOR CLOSERS *by*

HARDWARE PRODUCTS INC.  
READING, PA., U.S.A.

The unbeatable value, efficiency and durability of Reading Door Closers are assured by the continuing research and development . . . in design, materials, production and quality-control . . . carried on by our experienced, competent engineers and craftsmen.



**EASE OF OPERATION WHEN OPENING DOORS** — Doors open with a minimum of effort due to the unique construction of Reading Door Closers.

**PRECISION CLOSING-SPEED CONTROL** — One valve serves a dual purpose. Closing speed can be increased or decreased by simply turning the adjusting valve in one direction or the other. Latching speed is indicated by the attitude of the slot in the valve head . . . horizontal, for extreme slow speed and vertical, for extreme fast speed. Will adjust to check door from 85 degrees to 5 inches from latching position.

**SUPERIOR CONSTRUCTION** — Long-wearing qualities and greater power in operation are assured by precision production and parts designed for superior durability.

**PRECISION PARTS** — Parts are machined to proper tolerances to provide accurate fit and maximum performance.

**A COMPLETE LINE** — Reading Door Closers are available in a complete variety to meet all installation requirements.

**EASY TO INSTALL** — An easy-to-follow template sheet, packaged with each Reading Door Closer, makes every installation a simple procedure.

# READING

A Great Name in Door Closers

**CASE** — Made of close-grained, non-porous cast gray iron. The piston chamber is machined to close tolerance for perfect piston fit.

**ARMS** — Made of high quality malleable or ductile iron, all arms will withstand sudden strain or shock.

**CRANKSHAFT** — Made of drop-forged steel and precision ground. The crankshaft fits into a firmly deep-seated, accurately centered bearing surface in the bottom of the case and is amply supported above by a heavy bearing in the gland.

**PISTON** — All are centerless-ground to close tolerance.

**SPRING** — A clock-type, coiled spring is used for maximum power. Our Universal models are fitted with helical springs.

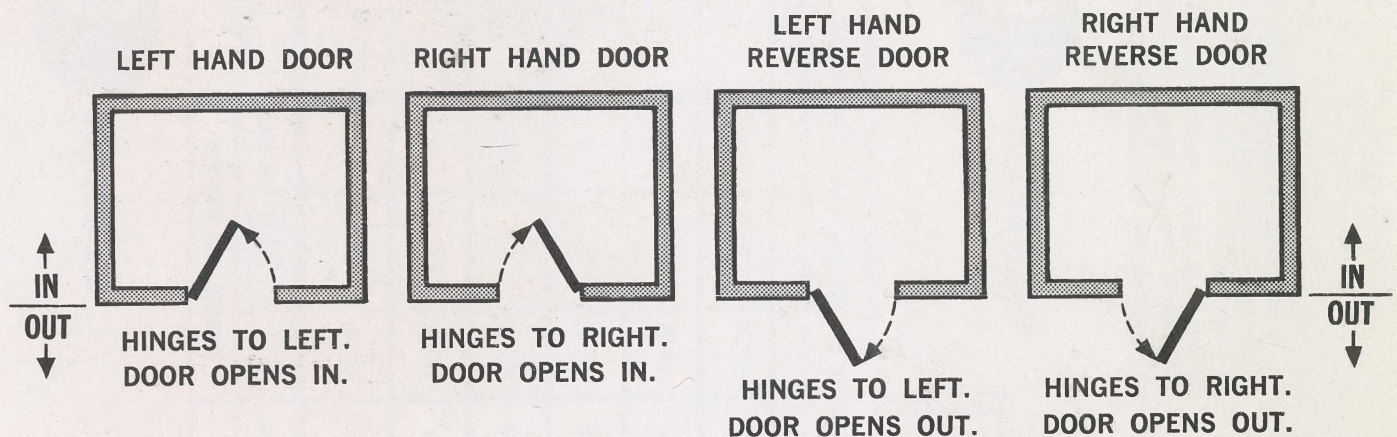
**HYDRAULIC FLUID** — A high quality oil, with good lubricating properties, reduces friction, minimizes wear. It will not gum, clog, freeze nor thin out at normal or extreme temperatures.

**PACKING WASHERS** — Made of highest quality oil-resisting materials.



## HOW TO DETERMINE THE PROPER "HAND" OF THE CLOSERS YOU ORDER

The "hand" of a DOOR is determined from the outside of a building, room or closet.



### HAND OF DOOR & LOCATION OF CLOSER DETERMINE THE "HAND" OF CLOSERS YOU ORDER

LEFT HAND DOOR (OPENS IN)	ORDER THIS "HAND" OF CLOSER
1. CLOSER to be mounted on INSIDE of door.	LEFT HAND CLOSER
2. CLOSER to be mounted OUTSIDE on corner or soffit bracket attached to door frame.	RIGHT HAND CLOSER AND CORNER OR SOFFIT BRACKET
RIGHT HAND DOOR (OPENS IN)	ORDER THIS "HAND" OF CLOSER
3. CLOSER to be mounted on INSIDE of door.	RIGHT HAND CLOSER
4. CLOSER to be mounted OUTSIDE on corner or soffit bracket attached to door frame.	LEFT HAND CLOSER AND CORNER OR SOFFIT BRACKET
LEFT HAND REVERSE DOOR (OPENS OUT)	ORDER THIS "HAND" OF CLOSER
5. CLOSER to be mounted on INSIDE of door.	RIGHT HAND CLOSER
6. CLOSER to be mounted inside on corner or soffit bracket attached to door frame.	LEFT HAND CLOSER AND CORNER OR SOFFIT BRACKET
7. CLOSER to be mounted on OUTSIDE of door.	RIGHT HAND CLOSER
RIGHT HAND REVERSE DOOR (OPENS OUT)	ORDER THIS "HAND" OF CLOSER
8. CLOSER to be mounted on INSIDE of door.	LEFT HAND CLOSER
9. CLOSER to be mounted INSIDE on corner or soffit bracket attached to door frame.	RIGHT HAND CLOSER AND CORNER OR SOFFIT BRACKET
10. CLOSER to be mounted on OUTSIDE of door.	LEFT HAND CLOSER

SEE BRACKETS SECTION OF CATALOG FOR PROPER BRACKETS, WHEN PRESCRIBED ABOVE.



# READING DOOR CLOSERS

## HANDED

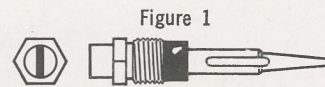


Figure 1

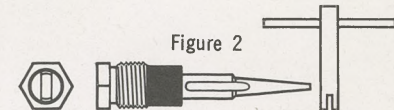


Figure 2

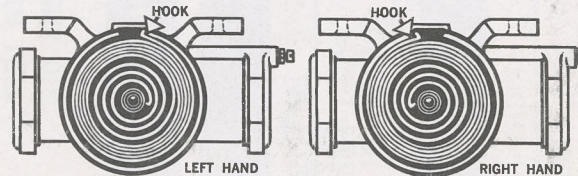
All Reading Door Closers are regularly assembled with a Slot-Head Valve for easy adjustments with a screw driver. See Figure 1.

Closers will be assembled with a Key Valve, when requested, at no extra cost. A special key is included for making adjustments. See Figure 2.

APPLICATION	REGULAR ARM CLOSERS			HOLDER ARM CLOSERS			FUSIBLE LINK CLOSERS			FUSIBLE LINK CLOSERS UNDERWRITER APPROVED			HOSPITAL ARM CLOSERS		
	TYPE NO.	QUANTITY PER CARTON	WT. PER CARTON	TYPE NO.	QUANTITY PER CARTON	WT. PER CARTON	TYPE NO.	QUANTITY PER CARTON	WT. PER CARTON	TYPE NO.	QUANTITY PER CTN.	WT. PER CARTON	TYPE NO.	QUANTITY PER CARTON	WT. PER CARTON
Screen, Storm or Light Interior Doors - 1 $\frac{1}{4}$ " x 3'-0" x 7'-0" Max. Size	A1*	6	53 LBS.	A51*	4	51 LBS.	—	—	—	—	—	—	—	—	—
Heavy Screen, Light Interior, Closet Doors - 1 $\frac{3}{8}$ " x 3'-0" x 7'-0" Max. Size	A2*	6	70 LBS.	A52*	4	53 LBS.	A52-FL	4	58 LBS.	—	—	—	—	—	—
Ordinary Interior, Light Exterior Doors - 1 $\frac{3}{4}$ " x 3'-4" x 7'-0" Max. Size	A3N*	4	57 LBS.	A53N*	4	63 LBS.	A53N-FL	4	65 LBS.	A53N-FL-UL*	4	65 LBS.	H53N	4	58 LBS.
Ordinary Exterior, Heavy Interior Doors - 2 $\frac{1}{4}$ " x 3'-0" x 7'-6" Max. Size	A4*	4	66 LBS.	A54*	4	72 LBS.	A54-FL	4	75 LBS.	A54-FL-UL*	4	75 LBS.	H54	4	67 LBS.
Heavy Exterior, Doors in heavy drafts, 3" x 3'-6" x 7'-6" Max. Size	A5N*	4	66 LBS.	A55N*	4	72 LBS.	A55N-FL	4	79 LBS.	A55N-FL-UL*	4	79 LBS.	H55N	4	68 LBS.
Extra Heavy Exterior Doors	A6*	4	67 LBS.	A56*	4	73 LBS.	A56-FL	4	82 LBS.	A56-FL-UL*	4	82 LBS.	—	—	—

ALL CLOSERS LISTED ABOVE ARE AVAILABLE WITH PARALLEL ARM. ADD - PA AFTER TYPE NO. WHEN ORDERING. BE SURE TO SPECIFY "HAND" OF CLOSER WHEN ORDERING CLOSERS LISTED ABOVE. SEE CATALOG PAGE 3. \*THESE CLOSERS ARE SHIPPED "HANDED" AS ORDERED, BUT CAN BE REVERSED TO EITHER RIGHT OR LEFT HAND. SEE INSTRUCTIONS BELOW.

SPECIFY KEY DUAL VALVE IF DESIRED. SEE DESCRIPTION ABOVE.



TO CHANGE HAND OF CLOSER — Remove top nut, arm, ratchet and cover. Take out spring, turn it over and engage outside hook of spring in offset at back of case. Replace cover and ratchet with groove in ratchet engaging inside hook of spring. Before replacing arm, loosen main arm socket screw and reverse swivel ball extension arm. Tighten socket screw securely. Replace main arm on shaft with "R" on top for Right Hand or "L" on top for Left Hand. Replace and tighten top nut.

# READING DOOR CLOSERS

## UNIVERSAL

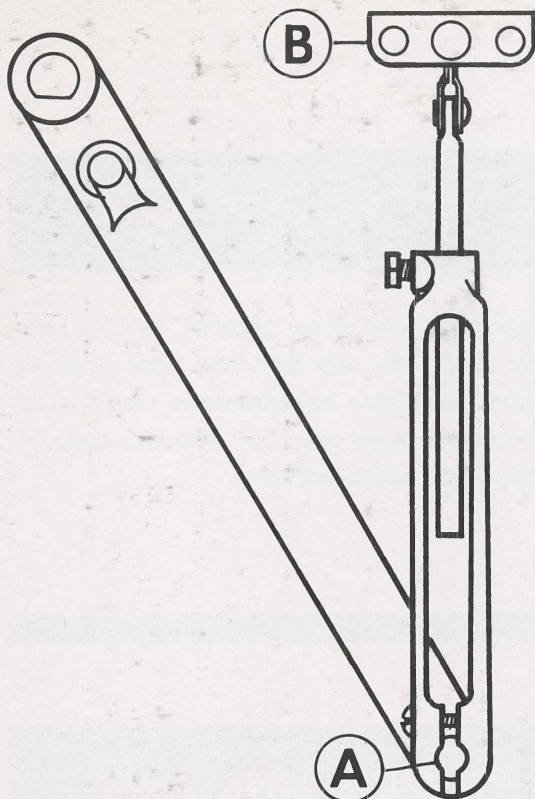
Reading UNIVERSAL Door Closers eliminate the necessity for changing the hand of closers for right or left hand applications. They feature a helical-type spring which winds from the top down, or from the bottom up, according to the application. Each spring is precisely engineered and made from finest quality material to provide proper spring tension on either hand.

APPLICATION: ALL RECOMMENDED FOR 1 $\frac{3}{4}$ " x 2'-6" x 7'-0" MAX. SIZE EXTERIOR AND 1 $\frac{3}{4}$ " x 3'-0" x 7'-0" MAX. SIZE INTERIOR DOORS.

REGULAR ARM UNIVERSAL			HOLDER ARM UNIVERSAL			HOSPITAL ARM UNIVERSAL		
TYPE NO.	QUANTITY PER CARTON	WT. PER CARTON	TYPE NO.	QUANTITY PER CARTON	WT. PER CARTON	TYPE NO.	QUANTITY PER CARTON	WT. PER CARTON
3U	4	52 LBS.	53U	4	60 LBS.	H53U	4	60 LBS.

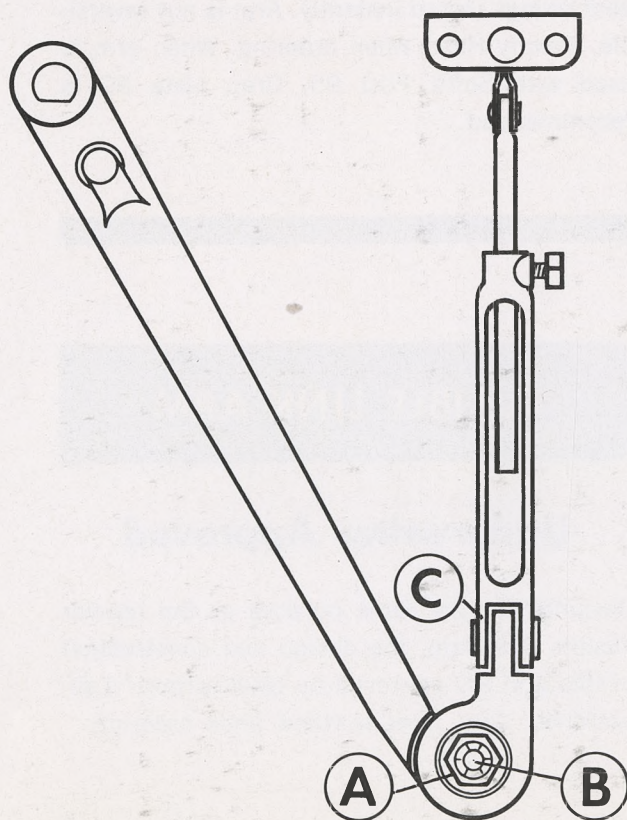
SPECIFY KEY DUAL VALVE IF DESIRED. SEE DESCRIPTION ABOVE.





## REGULAR ARM

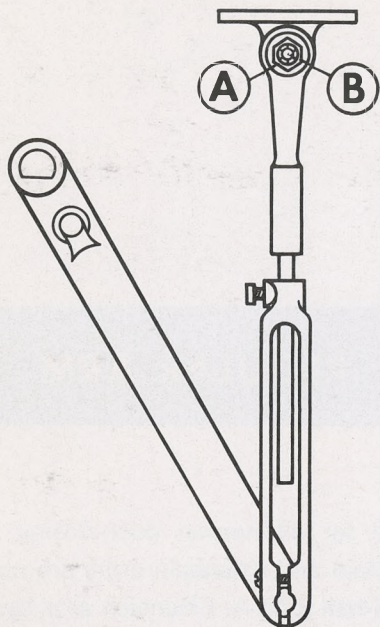
Designed for all normal door-closing requirements. Main and extension arms are connected by swivel-ball joint A. Extension arm has swivel-joint bracket B for mounting. Operation is free-and-easy. Specify Hand when ordering.



## 155° HOLDER ARM

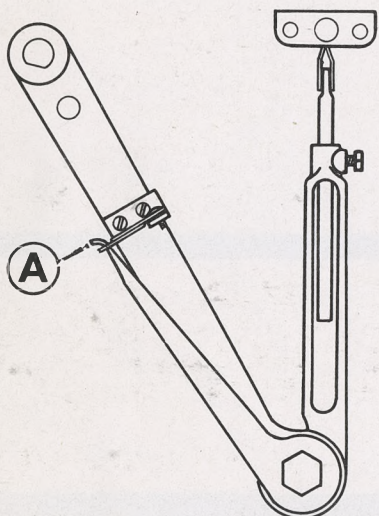
Eliminates the need for floor stops or hooks. Will hold door open, up to 155°. Loosen or tighten Nut A and Bolt B to set friction to given point where door is to be held open. Hinge-joint at C and swivel-joint mounting bracket allow ease of operation and reduce wear on parts. Specify Hand when ordering.





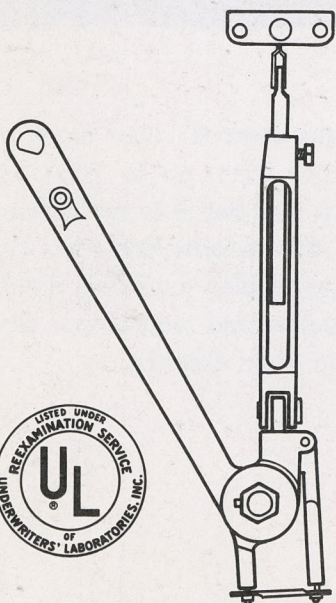
## 180° HOLDER ARM

Designed for the same purpose as the 155° Holder Arm, this arm will hold door open up to 180°. Hold-open adjustment is made in the same manner as for the 155° arm (see page 5). Specify Hand when ordering.



## FUSIBLE LINK ARM

Designed for use on fire-doors, for closing doors quickly and automatically in case of fire. Fusible link A melts at 160° F. When the link melts, door swings closed instantly. Arm is not reversible, specify Hand when ordering. When arm is used with Soffit Post 95, Drop plate 89 is recommended.



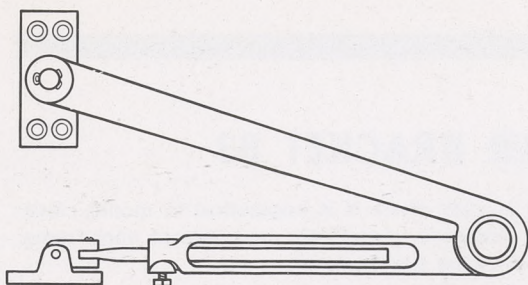
## FUSIBLE LINK ARM

### Underwriter Approved

Designed for the same purpose as the regular Fusible Link Arm, the design and construction of this arm are approved by Underwriters' Laboratories, Inc. Specify Hand when ordering.







- 93 — Used with A52 and A53N Closers.  
94 — Used with A54 and A55N Closers.

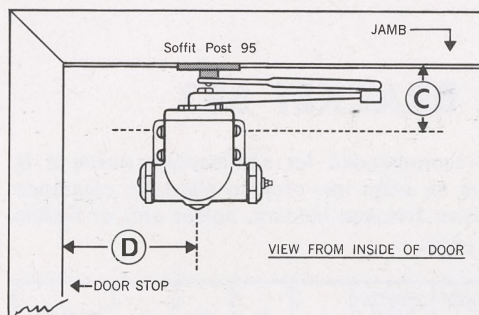
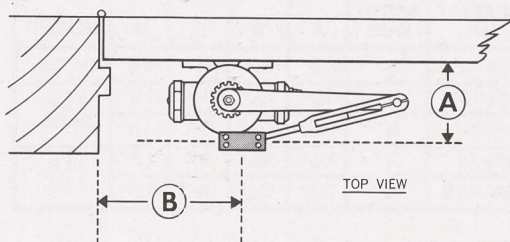
## HOLDER ARM For Inactive Doors

This arm is not a closer-arm, but is used on the inactive door of a pair of doors in conjunction with a holder-arm closer that is installed on the active door. It is manually adjusted to hold inactive door open when desired.

AVAILABLE ONLY ON  
SPECIAL ORDER, ON  
HOSPITAL ARM CLOSERS  
LISTED ON PAGE 4

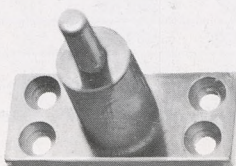
## HOSPITAL ARM

This specially constructed arm can be set to stop at any one of three positions . . . 45°, 90° or 130°. It is not reversible. Specify Hand when ordering.



## SOFFIT POST 95

This Soffit Post is used on Parallel Arm Closers with Fusible Link Arms. Base size  $3\frac{1}{8}$ " x  $1\frac{1}{16}$ ". Suggest using Drop Plate 89 where this post is desired.



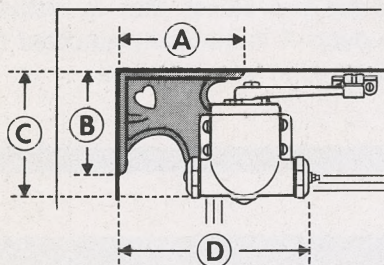
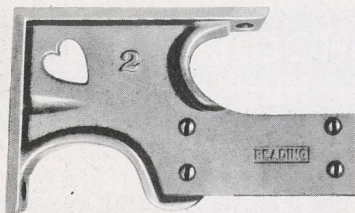
## PARALLEL ARM

### Application & Clearances

All Reading Handed closers are available with parallel arm . . . add PA after closer type number when ordering. This arm is used where other arms would project further out from door than available space allows, i.e. — where closer is to be mounted between doors, etc. Not reversible; specify Hand when ordering.

CLOSER TYPE NO.	A	B	C	D
A1-PA, A51-PA,	$3\frac{3}{4}$ "	$5\frac{3}{4}$ "	3"	6"
A2-PA, A52-PA, A52-FL-PA	4"	$6\frac{3}{4}$ "	$3\frac{1}{8}$ "	$6\frac{3}{8}$ "
A3N-PA, A53N-PA, A53N-FL-PA	$4\frac{3}{8}$ "	$7\frac{3}{4}$ "	$3\frac{5}{8}$ "	$7\frac{7}{8}$ "
A4-PA, A54-PA, A54-FL-PA, A5N-PA, A55N-PA, A55N-FL-PA, A6-PA, A56-PA, A56-FL-PA	$4\frac{1}{2}$ "	$7\frac{3}{4}$ "	$3\frac{3}{4}$ "	$7\frac{7}{8}$ "

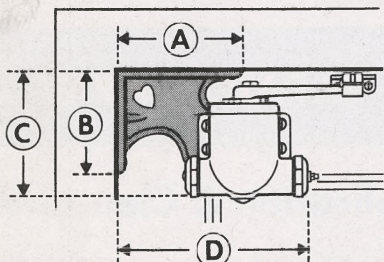




## CORNER BRACKET 83

This bracket is used where it is impractical to mount closer on the door. Fastened at both top and side of door frame, the bracket provides rigid support.

CLOSER TYPE NO.	BRACKET NO.	WIDTH BASE	A	B	C	D	WEIGHT
A1	83-A1	1 1/4"	5"	5"	7 1/2"	8 1/4"	2 LB. 3 OZ.
A2	83-A2						
A3N	83-A3N						
3U	83-3U						
A4	83-A4	1 1/4"	5"	5"	7 3/4"	9 1/4"	2 LBS. 5 OZ.
A5N	83-A5N						

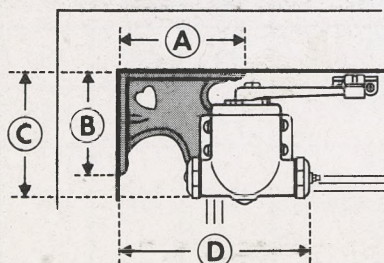
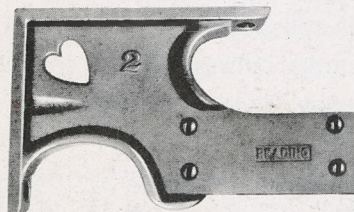


## CORNER BRACKET 083

This bracket is used for the same applications as the 83 Universal bracket except that it permits use where the door stile is too narrow to permit mounting the 83. The 083 base is only 7/8" wide.

CLOSER TYPE NO.	BRACKET NO.	WIDTH BASE	A	B	C	D	WEIGHT
A2	083-A2	7/8"	6 1/8"	4 3/8"	6 3/4"	10 1/2"	2 lb. 9 oz.
A3N	083-A3N	7/8"	6 1/8"	4 7/8"	7 1/2"	11 1/4"	2 LB. 13 OZ.
3U	083-3U	7/8"	6 1/8"	4 7/8"	7 1/2"	11 1/4"	
A4	083-A4	7/8"	7 3/8"	5 1/8"	8"	12"	3 LB. 4 OZ.
A5N	083-A5N	7/8"	7 3/8"	5 1/8"	8"	12"	

Specify Hand when ordering.

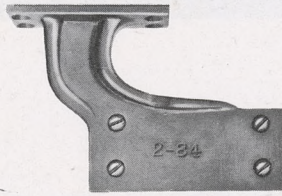


## CORNER BRACKET 583

This bracket is recommended for applications where it is necessary to have an extra low drop to allow for clearance such as where Glynn Johnson holders, holder arm or fusible link holders are used.

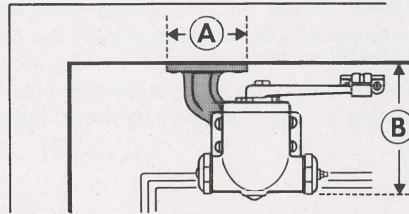
CLOSER TYPE NO.	BRACKET NO.	WIDTH BASE	A	B	C	D	WEIGHT
A2	583-A2	1 1/2"	6 7/8"	5 5/8"	8 1/2"	11 1/4"	4 LB. 10 1/2 OZ.
A3N	583-A3N	1 1/4"	6 7/8"	5 5/8"	8 1/2"	11 1/2"	
A4	583-A4	1 1/4"	7 3/8"	5 5/8"	9 1/4"	12 3/4"	5 LB. 2 1/2 OZ.
A5N	583-A5N	1 1/4"	7 3/8"	5 5/8"	9 1/4"	12 3/4"	



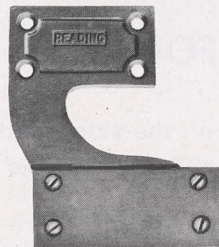


## SOFFIT BRACKET 84

The Soffit Bracket is used when closer cannot be mounted on the door and when greater leverage is desired. Mounted from the soffit or top door frame, the closer can be set farther from the hinge side than with a corner bracket.

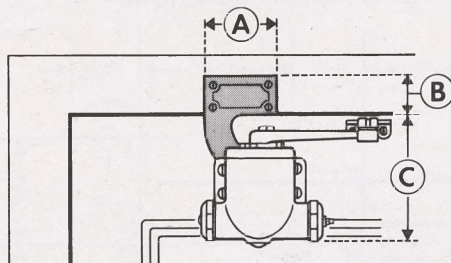


CLOSER TYPE NO.	BRACKET NO.	WIDTH BASE	A	B	WEIGHT
A2	84-A2	1 $\frac{3}{8}$ "	4 $\frac{3}{8}$ "	7"	1 LB. 10 OZ.
A3N	84-A3N	1 $\frac{3}{8}$ "	4 $\frac{5}{8}$ "	7 $\frac{7}{8}$ "	2 LB.
A4	84-A4	1 $\frac{3}{8}$ "	4 $\frac{3}{4}$ "	4 $\frac{7}{8}$ "	2 LB.
A5N	84-A5N	1 $\frac{3}{8}$ "	4 $\frac{3}{4}$ "	4 $\frac{7}{8}$ "	3 $\frac{1}{2}$ OZ.

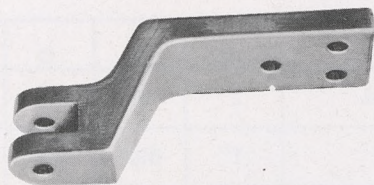


## FLUSH BRACKET 85

The Flush Bracket is used where top casing or soffit of the door does not permit use of a corner or soffit bracket. This bracket is mounted flush on the face side of the jamb.

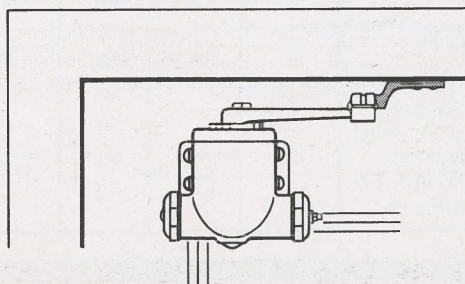


CLOSER TYPE NO.	BRACKET NO.	A	B	C	WEIGHT
A2	85-A2	3 $\frac{7}{8}$ "	2 $\frac{1}{8}$ "	8 $\frac{1}{2}$ "	1 LB. 9 OZ.
A3N	85-A3N	4 $\frac{7}{8}$ "	3 $\frac{1}{8}$ "	10"	2 LB. 3 $\frac{1}{2}$ OZ.
A4	85-A4	5"	3 $\frac{1}{4}$ "	11 $\frac{1}{4}$ "	3 LB.
A5N	85-A5N	5"	3 $\frac{1}{4}$ "	11 $\frac{1}{4}$ "	3 $\frac{1}{2}$ OZ.

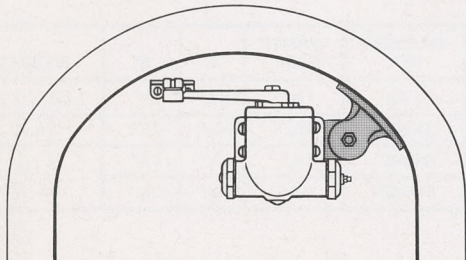
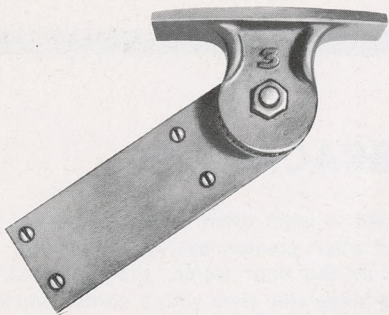


## OFFSET JAMB BRACKET 82

This bracket is used where the door trim does not permit use of a regular arm and often avoids the necessity for cutting the trim. Used on all closers.





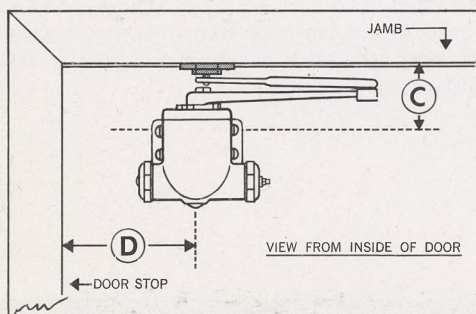
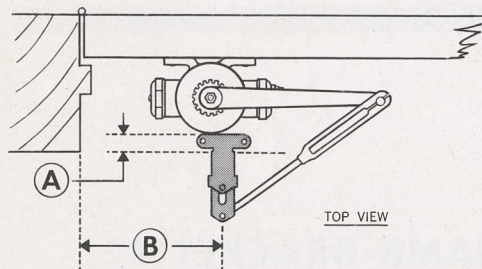
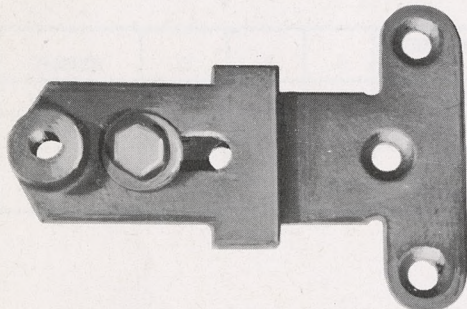


## ADJUSTABLE BRACKET 86

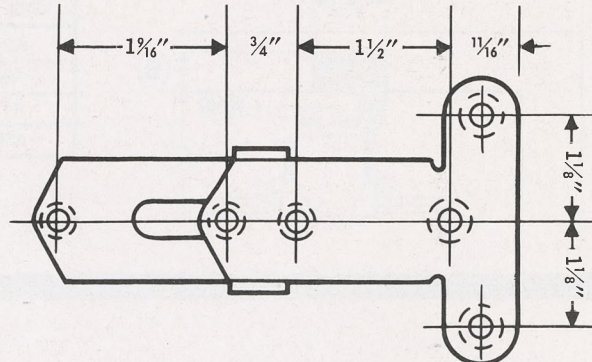
This bracket is made for use with arched-top doors where the closer is to be applied on the recessed side of the door. The bracket is adjustable to the curvature of the arch. Same bracket used for all sizes. Be sure to specify size of door closer when ordering . . . bracket must be drilled accordingly.

## ADJUSTABLE FOOT 87

This foot is used only in parallel arm applications. Closer is mounted on the side of door opposite the hinge side. Foot is installed on the underside of top door frame and is adjustable from a 2¼" projection to 3⅞" fully extended.

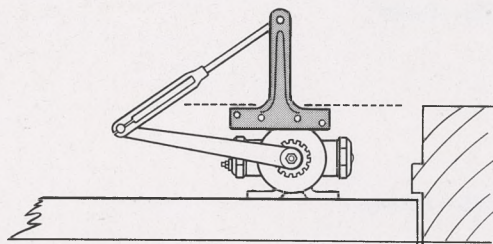
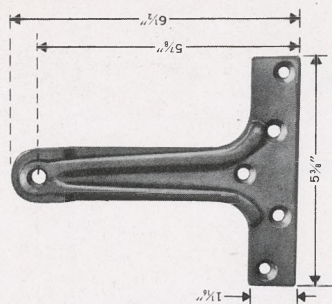


BRACKET SHOWN FULLY EXTENDED



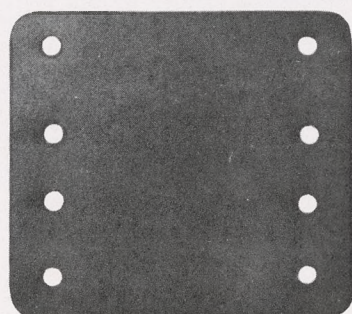
CLOSER TYPE NO.	A	B	C	D
A1-PA, A51-PA	1"	6"	2¾"	5⅝"
A2-PA	1"	6¾"	3⅛"	6⅝"
A3N-PA	1"	7¾"	3⅝"	7⅝"
A4-PA, A5N-PA, A6-PA	1"	7¾"	3¾"	7⅝"
A52-PA, A52-FL-PA, A53N-PA, A53N-FL-PA, A54-PA, A54-FL-PA, A55N-PA, A55N-FL-PA, A56-PA, A56-FL-PA	1"	7¾"	4¼"	7⅝"





## EXTENSION BRACKET 88

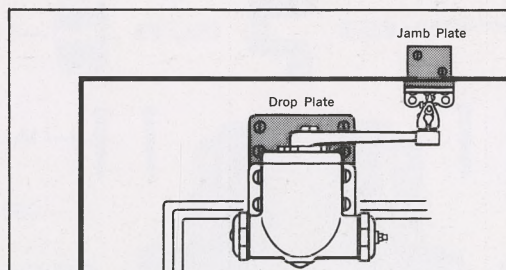
Use this bracket where it is necessary to secure extra clearance for the door closer arm. It is commonly used with parallel arm closers.



## DROP PLATE 89

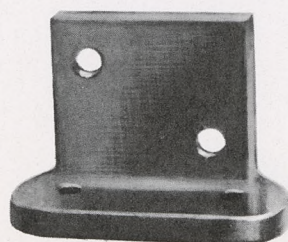
The Drop Plate is used with Parallel Arm Closers when the width of the top rail of the door is not sufficient to allow installation of the closer in the regular manner.

Closer Type No.	Plate Size	
	Width	Length
A2 and 52	4 1/2"	5"
A3N and 53	5"	4 1/2"
A4 and 54	5 1/2"	5"
A5N and 55N	5 1/2"	5"



## EXTENSION JAMB PLATE 90

The purpose of this bracket is basically the same as the 89. However, in this application the regular arm bracket attaches to the Jamb Plate.





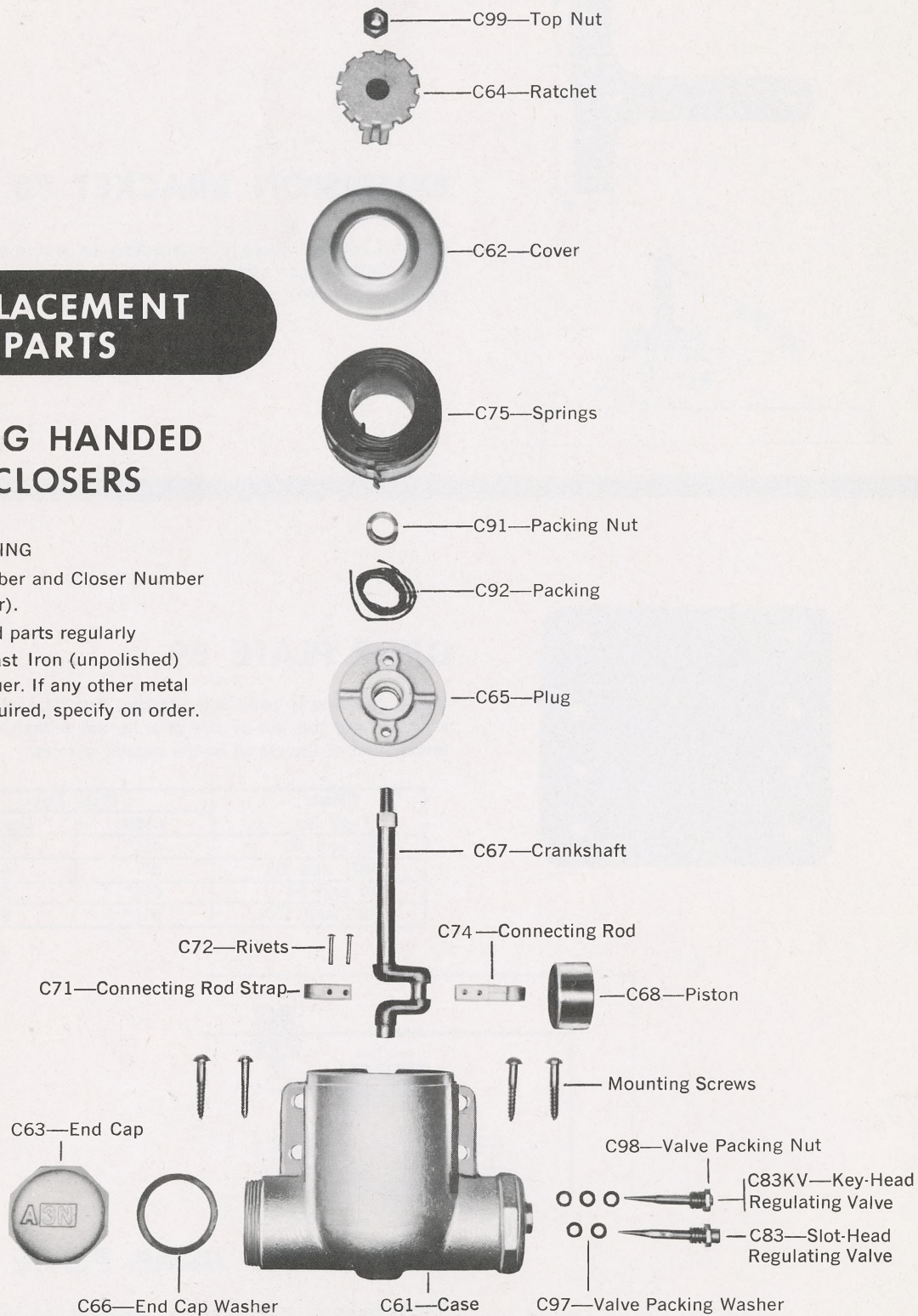
## REPLACEMENT PARTS

### READING HANDED DOOR CLOSERS

#### WHEN ORDERING

Give Part Number and Closer Number (Cast on Closer).

NOTE: Finished parts regularly furnished in Cast Iron (unpolished) — brown lacquer. If any other metal or finish is required, specify on order.

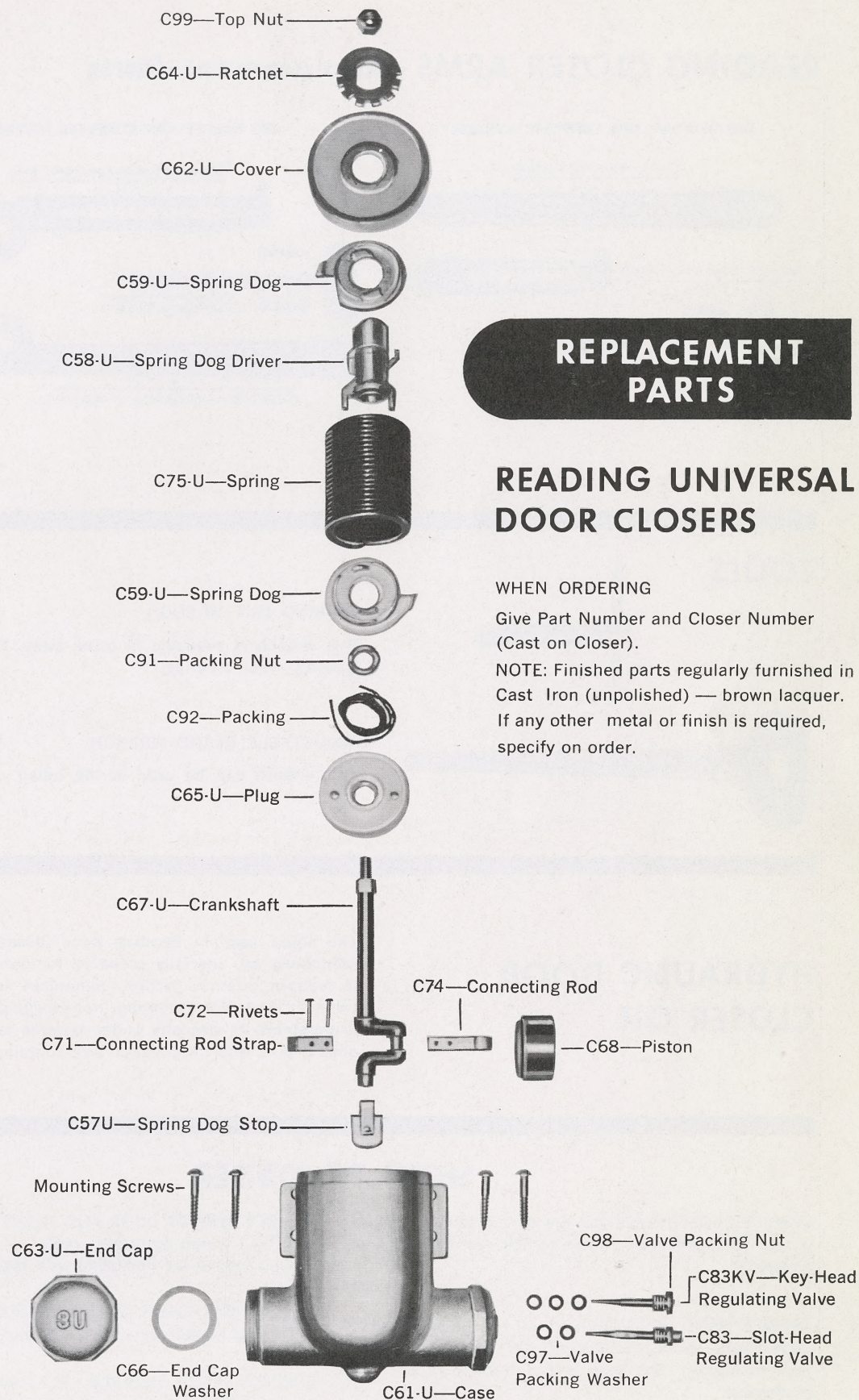


### HANDED CLOSER ASSEMBLIES

**C65SA PLUG ASSEMBLY** — C65 + C91 + C92

**C85SA CRANKSHAFT ASSEMBLY** — C67 + C99 + C74 + C71 + C72





## REPLACEMENT PARTS

## READING UNIVERSAL DOOR CLOSERS

### WHEN ORDERING

Give Part Number and Closer Number (Cast on Closer).

NOTE: Finished parts regularly furnished in Cast Iron (unpolished) — brown lacquer. If any other metal or finish is required, specify on order.

## UNIVERSAL CLOSERS ASSEMBLIES

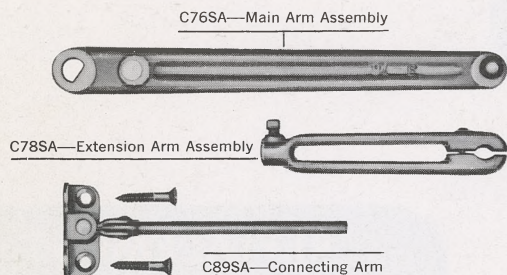
C65-U-SA PLUG ASSEMBLY — C65-U + C91 + C92

C85-U-SA CRANKSHAFT ASSEMBLY — C67-U + C99 + C74 + C71 + C72

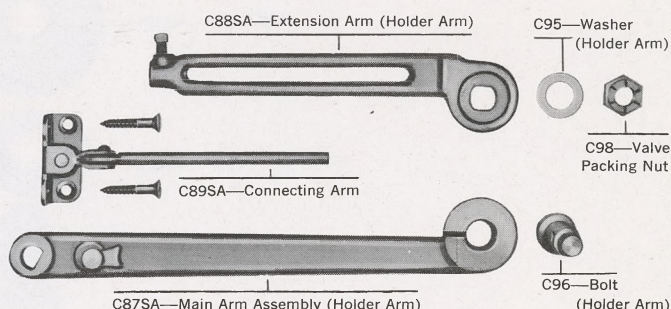


## READING CLOSER ARMS - Replacement Parts

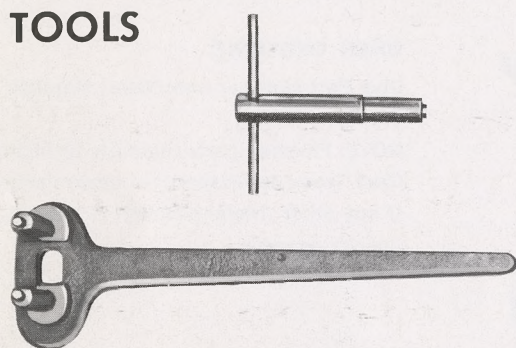
### C86 REGULAR ARM COMPLETE ASSEMBLY



### C90 HOLDER ARM COMPLETE ASSEMBLY



## TOOLS



### PACKING NUT WRENCH

This wrench is available in three sizes. Please specify size closer(s) when ordering.

### ADJUSTABLE GLAND WRENCH

This wrench can be used in the repair of all size closers.

## HYDRAULIC DOOR CLOSER OIL

The liquid used in Reading Door Closers is a high-grade lubricating oil, specially prepared for consistent uniformity. It reduces internal friction, minimizes wear and prevents valve-sticking. Non-gumming, non-clogging, non-freezing . . . it maintains its viscosity under extreme temperatures. Available in pint, quart and gallon size containers.

## HOW TO ORDER

**SPECIFY CLOSER TYPE NO.** Be sure that closer size is proper for application. Refer to our recommendations on page 4.

**SPECIFY HAND OF CLOSER** for all but universal closer applications. Indicate whether closer will be mounted on door or bracket. See page 3 to determine proper hand of closers.

**SPECIFY BRACKETS AND OTHER MOUNTING ACCESSORIES.** Our complete variety will provide for proper installation of closers in all applications. Refer to Brackets section of catalog.

**SPECIFY TYPE OF DOOR AND FRAME.** Indicate whether door and frame are wood, metal or kalamein, so that proper screws are packaged with order.

**SPECIFY MACHINE SCREWS OR THROUGH BOLTS** when desired for installation. State thickness of door.

**SPECIFY FINISH DESIRED.** BL—brown lacquer finish is furnished unless otherwise specified. SB—silver bronze. GB—gold bronze. PC—prime coat. These finishes are included at no extra cost.

**BRONZE-METAL CLOSERS.** All Reading Door Closers are available in Bronze Metal at extra cost, on request.





## READING GENERAL NO. 10

REVERSIBLE FOR EITHER LEFT OR RIGHT-HAND DOORS

The General Door Closer is a general purpose door closer that can be used on all aluminum doors and heavy screen doors. The heavy auxiliary spring can be regulated to any desired tension by turning the tooth gear with the wrench supplied. This spring also prevents the door from being blown open. Concealed in the 10 in. long, 1 1/4 in. diameter tube is a bumper spring which absorbs shock in the event the door is jarred open. Brass spreader washer in-

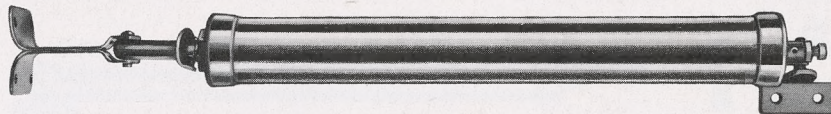
sures against loss of air in chamber thereby increasing checking action. Brass valve has drilled hole for air relief. Brass knurled lock nut assures positive lock adjustment after being properly set. Closer has a check washer which permits the door to be held open at any desired position. New improved strong steel door bracket allows the closer to be installed or removed without use of special tools. One dozen per carton. Weight 28 lbs. per dozen.

---

## READING SCREEN, STORM AND COMBINATION DOOR CLOSERS

FINISHED IN ALUMINUM OR DUCO TAN. PACKED IN INDIVIDUAL BOXES WITH INSTRUCTIONS

---



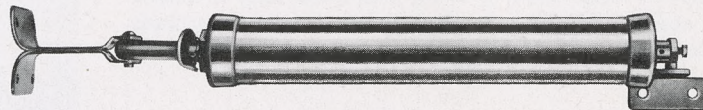
## READING SENIOR NO. 20

REVERSIBLE FOR EITHER LEFT OR RIGHT-HAND DOORS

The Senior Door Closer, of heavy construction, is suitable for all aluminum and screen doors up to and including 1 3/8" doors. Plunger rod allows over 90° opening. Concealed in the 10" long, 1 1/4" diameter tube is a bumper spring which absorbs the shock in the event the door is blown open. Brass spreader washer insures

against loss of air in chamber, thereby increasing checking action. Improved door brackets. Special check washer to hold door open. Pneumatic operation closes door quickly, quietly.

One dozen to a shipping carton. Weight 16 pounds per dozen.



## READING JUNIOR NO. 30

REVERSIBLE FOR EITHER LEFT OR RIGHT-HAND DOORS

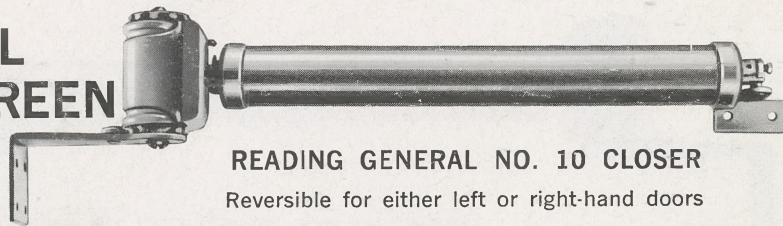
The Junior Door Closer, for use on all screen doors, has a 7 1/2" tube, 1 1/4" in diameter. Brass spreader washer insures against loss of air in chamber thereby increasing checking action. Improved door bracket, special check washer

to hold door open to any position. Closes door quickly and quietly — pneumatic operation.

One dozen to a shipping carton. Weight 14 pounds per dozen.



## READING GENERAL COMBINATION SCREEN AND STORM DOOR SETS

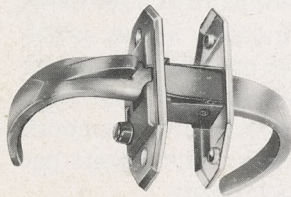


READING GENERAL NO. 10 CLOSER

Reversible for either left or right-hand doors

**SET NO. GC 100**—Includes No. 10 Closer, Latch and 1½ pr. Hinges. Packaged one dozen per carton. Weight per carton — 43 pounds.

**SET NO. GC 101**—Includes No. 10 Closer, Latch and 1½ pr. Hinges and Chain Door Guard. Packaged one dozen per carton. Weight per carton — 50 pounds.

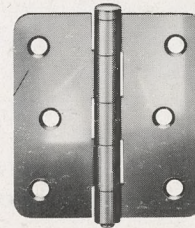


### LATCH

E-Z Set Push-Pull Screen and Storm Door Combination Latch. Fits all wood or metal doors ⅞ to 1¼ inch thick. Easy to install. Only one, one inch hole to drill. Handles and escutcheons made of solid aluminum. All interior parts of heavy steel, cadmium plated.

### HINGES

Each set packaged one and a half pair of loose pin hinges 3" x 2½" steel, cadmium plated, with necessary screws for hanging door. Hinges have rounded corners for easy mortising. Can be used for both full surface or half surface applications.

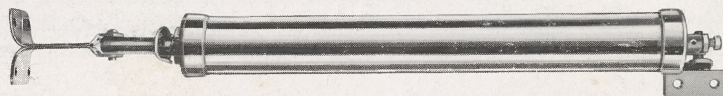


### CHAIN DOOR GUARD



Length overall 25¼ inches. Strong chain with two coiled springs, one at each end, to absorb shock.

## READING SENIOR COMBINATION SCREEN AND STORM DOOR SETS

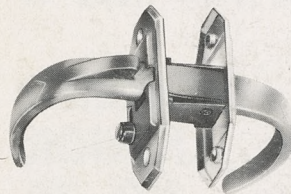


READING SENIOR NO. 20 CLOSER

Reversible for either left or right-hand doors

**SET NO. SC 200**—Includes No. 20 Closer, Latch and 1½ pr. Hinges. Packaged one dozen per carton. Weight per carton — 35 pounds.

**SET NO. SC 201**—Includes No. 20 Closer, Latch and 1½ pr. Hinges and Chain Door Guard. Packaged one dozen per carton. Weight per carton — 40 pounds.

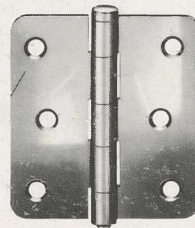


### LATCH

E-Z Set Push-Pull Screen and Storm Door Combination Latch. Fits all wood or metal doors ⅞ to 1¼ inch thick. Easy to install. Only one, one inch hole to drill. Handles and escutcheons made of solid aluminum. All interior parts of heavy steel, cadmium plated.

### HINGES

Each set packaged one and a half pair of loose pin hinges 3" x 2½" steel, cadmium plated, with necessary screws for hanging door. Hinges have rounded corners for easy mortising. Can be used for both full surface or half surface applications.



### CHAIN DOOR GUARD



Length overall 25¼ inches. Strong chain with two coiled springs, one at each end, to absorb shock.



