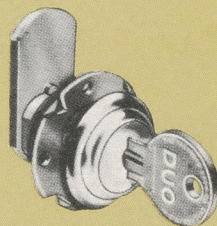
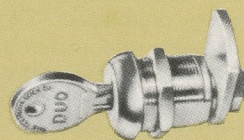


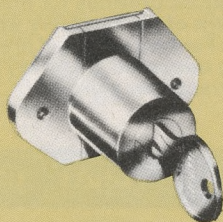
Cylinder Mechanisms
Pages 2-3



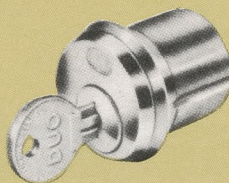
Standard Cam Locks
Pages 4-5



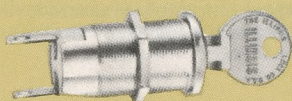
Rapid Change Cam Locks
Pages 6-7



Cabinet Locks
Pages 8-9



High Security Locks
Page 10



Special Locks
Page 11



Knob Locks
Page 12



LOCKS

Cylinder Mechanisms

GENERAL INFORMATION

The Illinois Lock Company is an organization directed to the primary purpose of servicing industry with precision made cabinet locks for its products.

To provide for varying degrees of security, key change specifications, key duplicating control requirements, and corrosive conditions, seven different basic lock mechanisms are manufactured, from the relatively simple single-bitted key locks to the more complex fourteen tumbler "Duo" locks. This range of design permits the engineer to fit the exact product need at a corresponding cost. The chart at the right has been designed to facilitate the comparison of lock mechanism characteristics, and the materials from which each lock type is made.

The complete "Illinois" line of locks provides a style suitable for the great majority of applications; however a practically unlimited number of variations can be effected from standard parts. An Engineering Department with the finest modern facilities is available for cooperation with your engineers in providing locks to your exact requirements.

Detailed specification sheets are available for each style of lock.

STANDARD and SPECIAL Locks

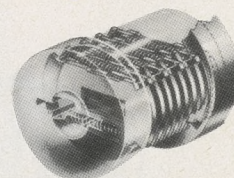
Throughout this catalog you will find all locks referred to as STANDARD or SPECIAL order items. SPECIALS, as indicated in the catalog, are available but must be made up by ordering and producing the necessary parts. This will require longer delivery times than for STANDARD locks which are also made to order but from stock parts which are carried in inventory. Where the lock is not designated as either STANDARD or SPECIAL, it is considered a STANDARD item.

STANDARD FINISHES

Attractive product appearance is usually very important, and lock finishes are an important contributing factor. The Illinois Lock Company takes particular pride in its polished and buffed, high standard lock finish regularly used on all "Type A, B, C and D mechanism locks. Locks of "Type F & G" mechanism are standard with a quality buffed and plated finish,

Bright Brass	US3	*Bright Bronze	US9
Satin Brass	US4	*Satin Bronze	US10
Bright Nickel	US14	*Old English	US8
Satin Nickel	US15	*Statuary Bronze	US20
Bright Chrome	US26	*Black	US18
Satin Chrome	US26D	*Mechanical Cadmium	

*Available as Special order.



"A"

"B"

MATERIAL

All brass lock. Nickel silver keys. Cam locks have plated steel cam, screw, nut and washer.

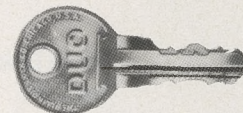
Brass mechanism and keys. Die-cast (Zamak No. 3) plug and barrel. Other parts plated steel.

MECHANISM

14 Tumblers: 2 sets of 5 primary and 1 set of 4 secondary tumblers. Positive tumbler operation for unlocking is accomplished by a design which provides for mechanical movement of the tumblers without the aid of springs. For long wear and precision alignment, 4 spring tempered brass key guides are provided. Practically pickproof.

"DUO" TRIPLE BITTED KEYS

KEY TYPE



KEY DUPLICATING

Not duplicatable on standard machines. Codes completely restricted. Key service with "Contractual Service Plan" and "Registered Key Plan."

KEY CHANGE SPECIFICATIONS

64,000 service key changes—Not Master Keyed. 16,000 service key changes—32 master changes. 16,000 service key changes—3645 master changes, and 32 grandmaster changes. One keyway restricted to Registered keys. Dimensional limitations on some lock styles reduce the key changes.

KEYWAY PROFILES

STANDARD

.110" thick—410, 510

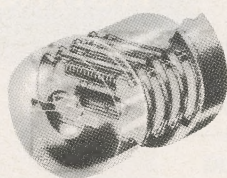
SPECIAL

.110" thick—610, 610B, 710

DIRT, FREEZING, CORROSION

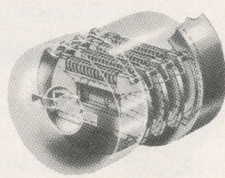
Superior for extreme situations such as laboratories.

Good



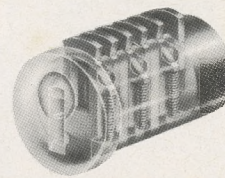
"C"

All brass lock.
Nickel silver keys.
Cam locks have plated
steel cam, screw, nut
and washer.



"D"

8 Tumblers: 2 sets of 4
tumblers locking in
opposite barrel splines.
Positive tumbler opera-
tion is accomplished by
the cam action of the
double bitted key with-
out the aid of springs.
4 brass key guides are
used.



"F&G"

Brass tumblers and keys.
Die-cast (Zamak No. 3) plug and barrel.
Other parts are plated steel.

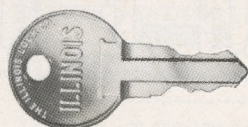
5 Tumblers operated by a key and springs.
Secured against disassembly. Die-cast
keyway. Can be provided with retainer
tumbler.

Type "F" cylinders feature 4 brass key
guides for long wear and precision
alignment.

MATERIAL



MECHANISM

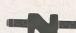
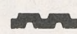
"ILLINOIS" DOUBLE BITTED KEYS



Practically restricted to locksmiths.
Codes and service kits available.

500 service key changes—not master keyed.
500 service key changes—78 master changes.
The heavy 210, 220 keys are used on master keyed
locks. Dimensional limitations on some locks reduce
the key changes.

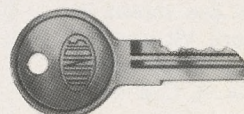
 .110" thick—210
 .072" thick—110

 .110" thick—220
 .072" thick—310

Superior



Good

"ILLINOIS" SINGLE BITTED KEYS



Completely unrestricted.
Codes and service kits available.

200 service key changes
—26 master key changes.

 .095" thick—360
 .072" thick—260

Suitable for inside clean environment.

KEY TYPE

KEY DUPLICATING

**KEY CHANGE
SPECIFICATIONS**

STANDARD

**KEYWAY
PROFILES**

SPECIAL

**DIRT,
FREEZING,
CORROSION**

GENERAL INFORMATION

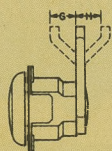


Fig. I

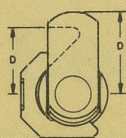
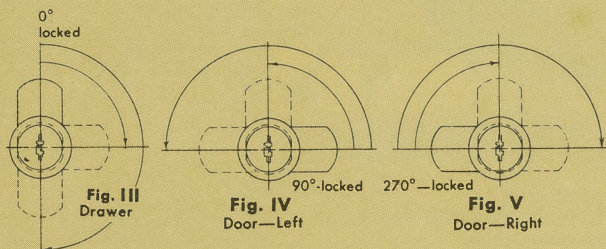
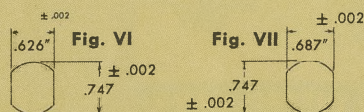


Fig. II

Use the letter "G" or "H" to designate the required cam-bolt offset in or out. Use the letter "D" to designate the length of either a straight or offset cam, or a hook-type bolt.



The above drawings indicate standard key and cam rotation. A 90° turn normally provides for the key to be removed in the locked position only, and the 180° turn provides for the key to be removed when locked or unlocked. Locks can be furnished with a 90° turn, key withdrawing in both locked and unlocked positions.



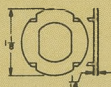
Regular cylinder body dimensions are shown in figure VI. Dimensions shown in figure VII are for locks with 90° turn, key withdrawing when locked and unlocked for mechanism types A, B, C, D only.



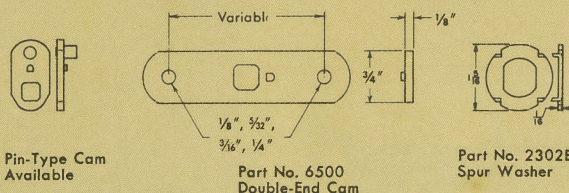
Part No. 2304
Speed Clip



Part No. 2301
Escutcheon



Part No. 2302A
Spur Washer



Pin-Type Cam
Available

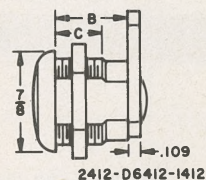
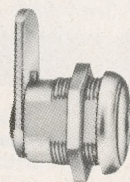
Part No. 6500
Double-End Cam

Part No. 2302B
Spur Washer

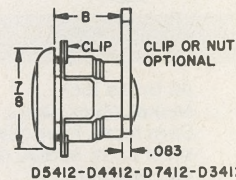
ORDER INSTRUCTIONS FOR CAM LOCKS

1. Lock Serial Number—Indicates "Mechanism type" and style.
2. "B" dimension—cylinder length.
3. "D" dimension—cam length. (see Fig. II)
4. "G" or "H" dimension—cam offset. (see Fig. I)
5. Cam position—0°, 90°, or 270°.
6. Cam rotation—90° or 180°.
7. Number of keys required.
8. Key change specification—number alike, master keyed, etc.
9. Whether or not key number is to be put on the lock (face or cam).
10. Lock finish—see page 2.
11. If Speed Assembly Clip is wanted, specify the thickness of the metal panel on which the lock is to be assembled.

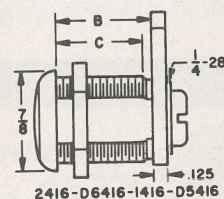
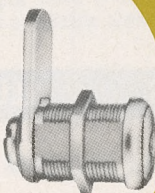
Cam Locks



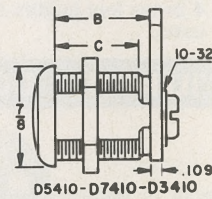
2412-D6412-1412



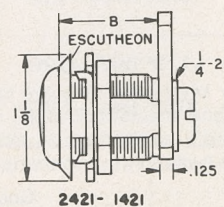
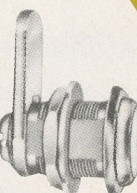
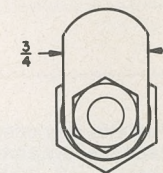
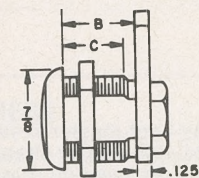
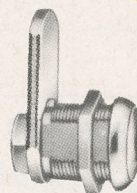
D5412-D4412-D7412-D3412



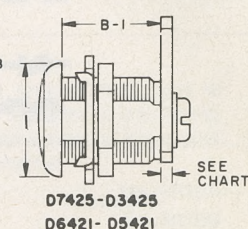
2416-D6416-1416-D5416



D5410-D7410-D3410



2421-1421



D7425-D3425
D6421-D5421



APPLICATION

MECHANISM TYPE
See
Pages 2 and 3LOCK
SERIES
NO.

CYLINDER

Length
"B" — Thread
"C"Thick
Fig. IWidth
Fig. II

CAM BOLT

LENGTHS
"D"
See Fig. IIOFFSETS
"G" "H"
See Fig. I

Installation on sheet-metal panels without removal of the cam-bolt. There are limitations in the relationship of panel thickness to the cam-bolt off-set and length.

DUO—14-TUMBLER—BRASS—"A"

2412

 $\frac{5}{8}$ "— $\frac{13}{32}$ "

.109

 $\frac{5}{8}$ "Hook Cams
are Special"H"
Offsets
are Special

DUO—14-TUMBLER—DIECAST—"B"

D6412

ILLINOIS—8-TUMBLER—BRASS—"C"

1412

 $\frac{7}{16}$ "— $\frac{7}{32}$ "
 $\frac{1}{2}$ "— $\frac{9}{32}$ "
 $\frac{5}{8}$ "— $\frac{13}{32}$ "

*D5412

ILLINOIS—8-TUMBLER—DIECAST—"D"

D4412

ILLINOIS—5-TUMBLER—DIECAST—"F"

D7412

ILLINOIS—5-TUMBLER—DIECAST—"G"

D3412

 $\frac{19}{32}$ "— $\frac{13}{32}$ "

.083

 $\frac{5}{8}$ "**
 $\frac{3}{4}$ ", $\frac{13}{16}$ ", $\frac{7}{8}$ ",
 $\frac{15}{16}$ ", 1", $1\frac{1}{8}$ ",
 $1\frac{1}{4}$ ", $1\frac{3}{8}$ ", $1\frac{1}{2}$ ".**
 $\frac{3}{16}$ ", $\frac{1}{4}$ ",
 $\frac{5}{16}$ ", $\frac{3}{8}$ ".

For metal panels.
Cam-bolt removable,
secured with a screw.

DUO—14-TUMBLER—BRASS—"A"

2416

DUO—14-TUMBLER—DIECAST—"B"

D6416

ILLINOIS—8-TUMBLER—BRASS—"C"

1416

ILLINOIS—8-TUMBLER—DIECAST—"D"

D5416

ILLINOIS—5-TUMBLER—DIECAST—"F"

D7410

ILLINOIS—5-TUMBLER—DIECAST—"G"

D3410

 $\left\{ \begin{array}{l} \frac{5}{8}" - \frac{17}{32}" \\ \frac{27}{32}" - \frac{3}{4}" \\ \frac{13}{32}" - 1" \\ 1\frac{11}{32}" - 1\frac{1}{4}" \end{array} \right\}$

.125

 $\frac{3}{4}$ "**
 $\frac{7}{8}$ ", 1", $1\frac{1}{8}$ ",
 $1\frac{1}{4}$ ", $1\frac{3}{8}$ ", $1\frac{1}{2}$ ",
 $1\frac{3}{4}$ ", 2".**
 $\frac{1}{2}$ ", $\frac{3}{8}$ ",
 $\frac{1}{4}$ ", $\frac{1}{8}$ ". $\frac{5}{8}$ "— $\frac{17}{32}$ "

.109

 $\frac{5}{8}$ "

For metal panels.
Cam-bolt removable,
secured with a nut.

DUO—14-TUMBLER—BRASS—"A"

2417

DUO—14-TUMBLER—DIECAST—"B"

D6417

ILLINOIS—8-TUMBLER—BRASS—"C"

1417

ILLINOIS—8-TUMBLER—DIECAST—"D"

D5417

 $\frac{5}{8}$ "— $\frac{17}{32}$ "

.125

 $\frac{3}{4}$ "**
 $\frac{7}{8}$ ", 1", $1\frac{1}{8}$ ",
 $1\frac{1}{4}$ ", $1\frac{3}{8}$ ", $1\frac{1}{2}$ ",
 $1\frac{3}{4}$ ", 2".**
 $\frac{1}{2}$ ", $\frac{3}{8}$ ",
 $\frac{1}{4}$ ", $\frac{1}{8}$ ". $\frac{1}{2}$ "— $\frac{13}{32}$ "
 $\frac{5}{8}$ "— $\frac{17}{32}$ "

For wooden panels.
Escutcheon optional.
Two sizes of spur
washer available (one
for hardwood).

DUO—14-TUMBLER—BRASS—"A"

2421

DUO—14-TUMBLER—DIECAST—"B"

D6421

ILLINOIS—8-TUMBLER—BRASS—"C"

1421

ILLINOIS—8-TUMBLER—DIECAST—"D"

D5421

ILLINOIS—5-TUMBLER—DIECAST—"F"

D7425

ILLINOIS—5-TUMBLER—DIECAST—"G"

D3425

"B"Ø "B-1"Ø

 $\frac{7}{8}$ " $\frac{27}{32}$ "
 $1\frac{1}{8}$ " $\frac{13}{32}$ "
 $1\frac{5}{8}$ " $1\frac{11}{32}$ "**D7425 & D3425
not available
this length.

.125

 $\frac{3}{4}$ "**
1", $1\frac{1}{8}$ ",
 $1\frac{1}{4}$ ", $1\frac{3}{8}$ ", $1\frac{1}{2}$ ",
 $1\frac{3}{4}$ ", 2".**
 $\frac{5}{16}$ "

.109

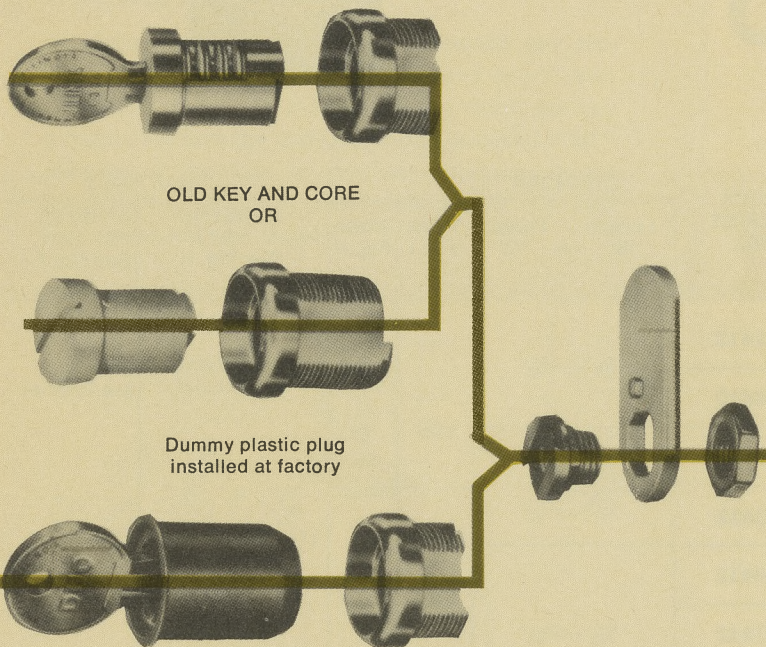
 $\frac{5}{8}$ "

*D5412 series lock also available in "B" dimension of $\frac{1}{2}$ " with $\frac{3}{32}$ " thread.
**Special cam-bolt lengths and offsets are available at extra cost.
ØUse No. 2301 escutcheon to reduce "B" dimension $\frac{1}{16}$ ".

RAPID-CHANGE SERIES

Cam Locks

RAPID-CHANGE SERIES



Operator removes dummy plug or existing key and core, then removes new key and core from protective plastic cap (Pat. No. 3,438,484) and installs this plug with preselected key.

Now, the new Illinois "Rapid-Change" replacement lock core (Pat. No. 3,336,774) makes rekeying of locks simple and quick. The secret is in the dovetail (Pat. No. 3,399,555) that connects the lock core to the plug extension. Users may order a stock of keys and matching core mechanisms and at any time change the keying. To do this job merely requires the user to remove the cam, slide the core out, change the dove-tail from the old core to the new core, replace in cylinder and re-fasten the cam. The entire job can be done in a few seconds. The new "Rapid-Change" replacement cores (Pat. No. 3,336,774) come in die cast, brass, stainless steel and hardened stainless steel with regular Illinois or the famous "Duo" mechanism.

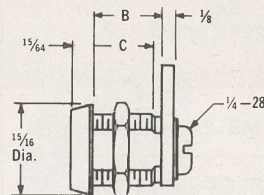
THE "RAPID-CHANGE" LOCK may also be ordered with a plastic dummy plug which allows the lock to be installed at the factory and KEYED on location after delivery.

ORDER INSTRUCTIONS FOR CAM LOCKS

1. Lock Serial Number—Indicates "Mechanism type" and style.
2. "B" dimension—cylinder length.
3. "D" dimension—cam length (see Fig. II) page 4.
4. "G" or "H" dimension—cam offset (see Fig. I) page 4.
5. Cam position—0°, 90°, or 270°.
6. Cam rotation—90° or 180°.
7. Number of keys required.
8. Key change specification—number alike, master keyed, etc.
9. Whether or not key number is to be put on the lock (face or cam).
10. Lock finish—specify.

CAM LOCKS RAPID CHANGE SERIES

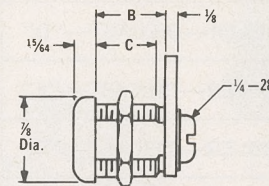
APPLICATION



R8016 & R8416

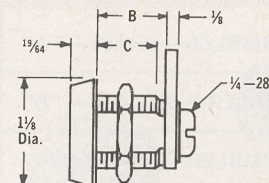
HIGH SECURITY "U.L."
"Listed under Reexamination Service
of Underwriters' Laboratories, Inc."
For metal panels.
Cam Bolt removable, secured with a
screw.
Rapid Change keying.

For metal panels.
Cam Bolt removable, secured with a
screw.
Rapid Change keying.



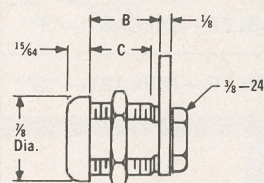
R9016, R9416, R2416,
RD6416 & RD5416

For metal panels.
Cam Bolt removable, secured with a
screw.
Rapid Change keying.



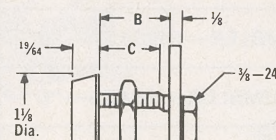
R9036, R9436, R2436,
RD6436 & RD5436

For metal panels.
Cam Bolt removable, secured with a
screw.
Rapid Change keying.
Hardened steel spin free security ring.



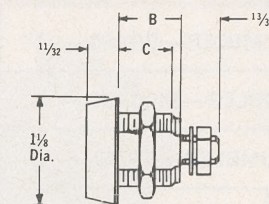
R9017, R9417, R2417,
RD6417 & RD5417

For metal panels.
Cam Bolt removable, secured with a
nut.
Rapid Change keying.



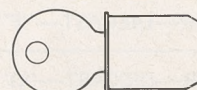
R9037, R9437, R2437,
RD6437 & RD5437

For metal panels.
Cam Bolt removable, secured with a
nut.
Rapid Change keying.
Hardened steel spin free security ring.



R800, R801, R802

For vending machine and parking
meters.
Rapid Change keying.
Hardened steel spin free security ring.



R675, R676, R677,
R678 & R679

Rekeying plug mechanism complete,
for all Rapid Change locks.
Furnished with plastic protective cap.

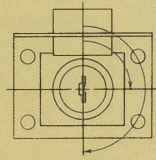


	MECHANISM TYPE See Page 2	MATERIAL			Lock Series Number	CYLINDER LENGTHS		CAM BOLT			
		Plug	Barrel	ØKeyway Head Inserts		Length "B"	Thread "C"	Thick. Fig. I Page 4	Width Fig. II Page 4	Length "D" Fig. II Page 4	Offsets "G" "H" Fig. I Page 4
	DUO-14 Tumbler "K"	*S.S. "H"	*S.S. "H"	(2) *S.S. "H"	R8016	For available lengths inquire.					
	DUO-14 Tumbler "N"	*S.S. "S"	*S.S. "S"	(2) *S.S. "S"	R8416						
	DUO-14 Tumbler "K"	*S.S. "H"	BRASS	(2) *S.S. "H"	R9016	$2\frac{3}{32}$ — $\frac{5}{8}$ $1\frac{3}{32}$ — $1"$					
	DUO-14 Tumbler "N"	*S.S. "S"	BRASS	(2) *S.S. "S"	R9416						
	DUO-14 Tumbler "L"	BRASS	BRASS	(2) BRASS	R2416						
	DUO-14 Tumbler "M"	DIECAST	DIECAST	(1) BRASS	RD6416						
	ILLINOIS-8 Tumbler "D"	DIECAST	DIECAST	NONE	RD5416						
	DUO-14 Tumbler "K"	*S.S. "H"	BRASS	(2) *S.S. "H"	R9036	$2\frac{1}{32}$ — $\frac{9}{16}$ $1\frac{1}{32}$ — $1\frac{5}{16}$					
	DUO-14 Tumbler "N"	*S.S. "S"	BRASS	(2) *S.S. "S"	R9436						
	DUO-14 Tumbler "L"	BRASS	BRASS	(2) BRASS	R2436						
	DUO-14 Tumbler "M"	DIECAST	DIECAST	(1) BRASS	RD6436						
	ILLINOIS-8 Tumbler "D"	DIECAST	DIECAST	NONE	RD5436						
	DUO-14 Tumbler "K"	*S.S. "H"	BRASS	(2) *S.S. "H"	R9017	For available lengths inquire.		$\frac{1}{8}"$	$\frac{3}{4}"$	$\frac{7}{8}"$, $1"$, $1\frac{1}{8}"$, $1\frac{1}{4}"$, $1\frac{3}{8}"$, $1\frac{1}{2}"$, $1\frac{3}{4}"$, $2"$	$\frac{1}{8}"$, $\frac{1}{4}"$, $\frac{5}{16}"$, $\frac{3}{8}"$, $\frac{7}{16}"$, $\frac{1}{2}"$
	DUO-14 Tumbler "N"	*S.S. "S"	BRASS	(2) *S.S. "S"	R9417						
	DUO-14 Tumbler "L"	BRASS	BRASS	(2) BRASS	R2417						
	DUO-14 Tumbler "M"	DIECAST	DIECAST	(1) BRASS	RD6417						
	ILLINOIS-8 Tumbler "D"	DIECAST	DIECAST	NONE	RD5417						
	DUO-14 Tumbler "K"	*S.S. "H"	BRASS	(2) *S.S. "H"	R9037	For available lengths inquire.					
	DUO-14 Tumbler "N"	*S.S. "S"	BRASS	(2) *S.S. "S"	R9437						
	DUO-14 Tumbler "L"	BRASS	BRASS	(2) BRASS	R2437						
	DUO-14 Tumbler "M"	DIECAST	DIECAST	(1) BRASS	RD6437						
	ILLINOIS-8 Tumbler "D"	DIECAST	DIECAST	NONE	RD5437						
	DUO-14 Tumbler "K"	*S.S. "H"	BRASS	(2) *S.S. "H"	R802	$4\frac{1}{64}$ — $3\frac{37}{64}$					
	DUO-14 Tumbler "N"	*S.S. "S"	BRASS	(2) *S.S. "S"	R801						
	DUO-14 Tumbler "L"	BRASS	BRASS	(2) BRASS	R800						
	DUO-14 Tumbler "K"	*S.S. "H"		(2) *S.S. "H"	R679						
	DUO-14 Tumbler "N"	*S.S. "S"		(2) *S.S. "S"	R678						
	DUO-14 Tumbler "L"	BRASS		(2) BRASS	R677						
	DUO-14 Tumbler "M"	DIECAST		(1) BRASS	R676						
	ILLINOIS-8 Tumbler "D"	DIECAST		NONE	R675						

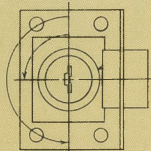
*S.S. "H" = Stainless Steel Hardened.
*S.S. "S" = Stainless Steel Soft.
Ø = Stainless steel hardened keyway head insert (stand-
ard on all S.S. "H" Locks) are available at slight
extra cost on all DUO Rapid Change Locks.
** = Special Cam Bolt lengths and offsets are available at
extra cost.

GENERAL INFORMATION

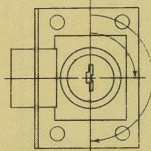
The following drawings indicate standard key turn arrangements for "drawers", "right hand doors", and "left hand doors." As indicated in the chart, the key withdraws in both the locked (0°) and unlocked (180°) positions of the key, or the key withdraws in the locked (0°) position only with less than 180° turn and with a reduced bolt throw.



Drawer Lock
Right Turn to Unlock
Fig. XII



Door—Left Hand
Left Turn to Unlock
Fig. XIII



Door—Right Hand
Right Turn to Unlock
Fig. XIV

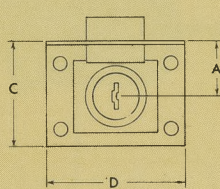


Fig. XV

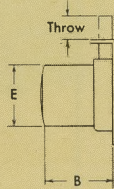
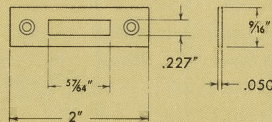
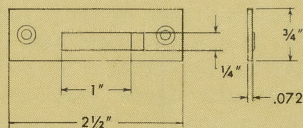


Fig. XVI

STRIKES



Part No. 1509
No. 4 screws F.H.W.S.
Lock No. 2012 and Similar

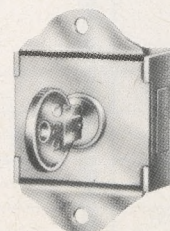
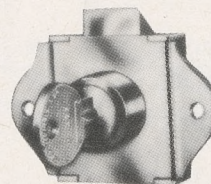
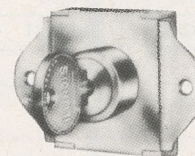
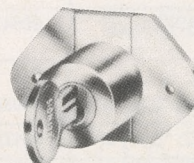
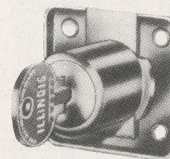
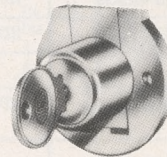
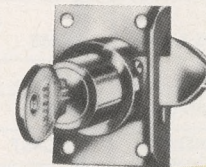
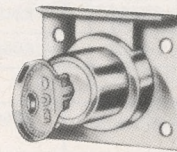
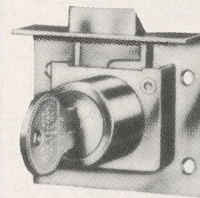
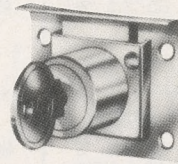


Part No. 1523
No. 5 screws F.H.W.S.
Lock No. 2825
Specify Right Hand or Left Hand

Order Instructions for Cabinet Locks

1. Lock serial number—indicates "mechanism type" and style.
2. Key rotation—"drawer", "left-hand door" or "right-hand door"—See figures XII, XIII and XIV.
3. Key withdrawal position—when locked and unlocked (0° & 180°) or when locked only (0°).
4. The drop dimension if more than one (Dimension "A").
5. Cylinder length if more than one (Dimension "B").
6. Number of keys required.
7. Key change specification—number alike, master keyed, etc.
8. Whether or not key number is to be put on the lock (face or back plate).
9. Lock finish—See page 2.

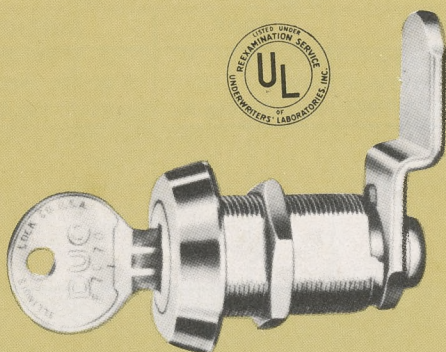
Cabinet Locks



See Pages 2 and 3 for mechanism
designations "A" "B" "C" "D" "F" "G"

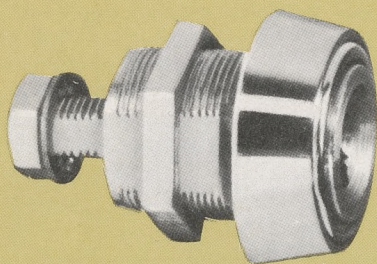
APPLICATION	LOCK SERIES NUMBER	MECH. TYPE	BOLT		OPERATION			DROP		DIMENSIONS		
			STYLE	SIZE	KEY TURN—	BOLT THROW—	KEY WITH- DRAWING	“A” Fig. XV	“C” Fig. XV	“B” Fig. XVI	“D” Fig. XV	“E” Fig. XVI
For half-mortise installa- tion on wooden panels.	2012	A	DEAD	$\frac{3}{16}$ " x $\frac{27}{32}$ "	180° — $\frac{3}{8}$ " — 0° & 180° 135° — $\frac{5}{16}$ " — 0°	$\frac{3}{4}$ "	$1\frac{1}{2}$ "	$\frac{15}{16}$ "	2"	$\frac{7}{8}$ "		
	D6013	B										
	1012	C										
	D5013	D										
	D7013	F										
	D3013	G										
	2020	A	SPRING	$\frac{5}{16}$ " x $\frac{3}{4}$ "	90° — $\frac{9}{32}$ " — 0°	$\frac{7}{8}$ "	$1\frac{5}{8}$ "	$\frac{15}{16}$ "	2"	$\frac{7}{8}$ "		
	D6021	B										
	1020	C										
	D5021	D										
	2024	A	DEAD	$\frac{3}{16}$ " x $\frac{27}{32}$ "	180° — $\frac{3}{8}$ " — 0° & 180°	$\frac{7}{8}$ "	$1\frac{5}{8}$ "	$\frac{15}{16}$ ", $1\frac{1}{16}$ ", $1\frac{5}{16}$ ".	2"	$\frac{7}{8}$ "		
	1024	C										
	2825	A	HOOK	$\frac{3}{16}$ " x $\frac{27}{32}$ "	180° — X — 0° & 180°	$\frac{7}{8}$ "	$1\frac{5}{8}$ "	$1\frac{1}{16}$ " or $1\frac{5}{16}$ "	2"	$\frac{7}{8}$ "		
	5045	D	DEAD	$\frac{3}{16}$ " x $\frac{5}{8}$ "	180° — $\frac{3}{8}$ " — 0° & 180° 135° — $\frac{5}{16}$ " — 0°	$\frac{3}{4}$ "	$1\frac{9}{16}$ "	$\frac{27}{32}$ "	$1\frac{11}{16}$ "	$\frac{7}{8}$ "		
	7045	F										
	3045	G										
For surface installation on wooden panels.	2047	A	DEAD	$\frac{1}{8}$ " x $\frac{5}{8}$ "	180° — $\frac{3}{8}$ " — 0° & 180° 135° — $\frac{5}{16}$ " — 0°	$\frac{3}{4}$ " or 1"	$1\frac{1}{2}$ "	$\frac{27}{32}$ "	$1\frac{5}{8}$ "	$\frac{7}{8}$ "		
	5047	D										
	7047	F										
	3047	G										
	D3048	G	DEAD	$\frac{1}{8}$ " x $\frac{5}{8}$ "	180° — $\frac{3}{8}$ " — 0° & 180° 135° — $\frac{5}{16}$ " — 0°	$\frac{3}{4}$ "	$1\frac{5}{16}$ "	$\frac{7}{8}$ "	2"	$\frac{7}{8}$ "		
For surface installation on metal panels.	2310	A	DEAD	$\frac{5}{16}$ " x $\frac{3}{4}$ "	180° — $\frac{5}{16}$ " — 0° & 180°	$\frac{27}{32}$ "	$1\frac{11}{16}$ "	$\frac{15}{32}$ "	$2\frac{3}{16}$ " between hole centers	$\frac{7}{8}$ "		
	D6310	B										
	1310	C										
	D5310	D										
	D7310	F										
	D3310	G										
	2311	A	SPRING	$\frac{5}{16}$ " x $\frac{3}{4}$ "	100° — $\frac{5}{16}$ " — 0°	$\frac{27}{32}$ "	$1\frac{11}{16}$ "	$\frac{15}{32}$ "	$2\frac{3}{16}$ " between hole centers	$\frac{7}{8}$ "		
	D6311	B										
	1311	C										
	D5311	D										
For surface installation on metal panels. Standard for steel lockers.	6312	B	DEAD	$\frac{5}{16}$ " x $\frac{3}{4}$ "	180° — $\frac{5}{16}$ " — 0° & 180°	$\frac{27}{32}$ "	$1\frac{11}{16}$ "	$\frac{7}{32}$ "	$2\frac{3}{16}$ " between hole centers	$\frac{5}{8}$ "		
	6313	B	SPRING		100° — $\frac{5}{16}$ " — 0°							

High Security Locks



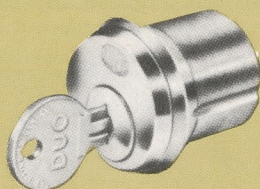
TOP SECURITY HARDENED STAINLESS STEEL

This great Duo Lock is listed by Underwriters Laboratories against picking and forceable entry. Barrel and plug are hardened stainless steel. A pair of hardened stainless steel keyway inserts to protect against drilling. These locks come in the same "Rapid-Change" core (Pat. Nos. 3,336,774 and 3,399,555) style for quick key changes and their security makes them ideal for burglar alarm systems, switch locks and other top security uses.



FOR REKEYING VENDING MACHINES

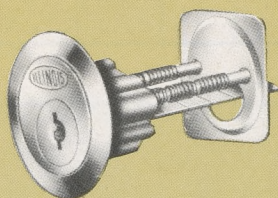
The Illinois System for convenient rekeying of vending machines. Vending machine operators will welcome this fast easy way to rekey a machine at any time in just a moment. Any service man can install the "Rapid-Change" lock. For the convenience of operators ordering new machines, the machine can be delivered with a plastic plug in the lock barrel. Upon receiving the machine, the operator can key the lock in any manner by removing the plastic plug and installing the "Rapid-Change" core (Pat. Nos. 3,336,744 and 3,399,555) of his choice. The face is available with a free spin steel head ring.



DUO MORTISE LOCK CYLINDERS

This solid brass mortise lock cylinder can be easily installed in most door latching mechanisms. With 14 tumblers and a wide range of key combinations, it offers maximum security for any installation.

1 1/4" Length	No. 20015A
1 1/8" Length	No. 20015B
1" Length	No. 20015C



DUO RIM LOCK CYLINDERS

The Duo rim lock cylinder will fit doors of any thickness. Constructed of brass parts with a non-ferrous case, it can be used for original installation or as a replacement on an existing mechanism.

No. D20010

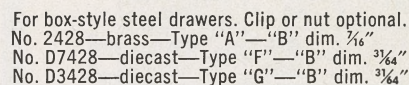
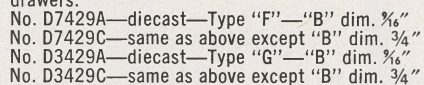


DUO PADLOCKS

The Duo padlock offers top security wherever a lock of this type is required. It has the famous Duo mechanism and features a hardened, plated steel shackle that locks on both sides. Construction is brass and non-ferrous alloy. Finish is hammered gray baked enamel.

1 1/2" Size	No. 6510A
1 3/4" Size	No. 6510B

3/32



No. 2830A—brass—Type “A” with T-bolt and strike for positive locking—“B” dim. 1”
 No. 2830D—same as above except “B” dim. 1 $\frac{3}{8}$ ”
 No. 1830A—brass—Type “C” with T-bolt and strike for positive locking—“B” dim. 1”
 No. 1830D—same as above except “B” dim. 1 $\frac{3}{8}$ ”
 No. 1832—brass—Type “C” with straight bolt and cup—“B” dim. $\frac{7}{8}$ ”
 No. 3830A—diecast—Type “F” or “G” with T-bolt and strike for positive locking—“B” dim. 1”

For information on available switch locks, request switch lock bulletin.

Lock cylinder for fitting into standard patio-door handles.
No. 594—diecast—Type "F"

For installation on wooden panels from the front. Drill cylinder and bolt holes and assemble by removing the bolt. Six tumblers only.

No. D5050A—diecast—Type “D”
“L” = $\frac{7}{16}$ ”, “K” = $\frac{1}{16}$ ”, “A” = 1” or 1 $\frac{5}{8}$ ”

No. D5050B—diecast—Type “D”
“L” = $\frac{7}{16}$ ”, “K” = $\frac{1}{16}$ ”, “A” = 1” or 1 $\frac{5}{8}$ ”

No. 6715—diecast—Type "B"
No. 5715—diecast—Type "D"
No. 6713—diecast—handle only.

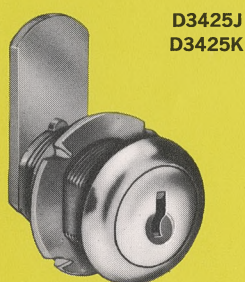
Leg leveler—base swivels to adjust to floor. Cadmium-plated steel.
No. 0100—unit complete with bracket and locking nut.
No. 0102—base-and-stud assembly only.



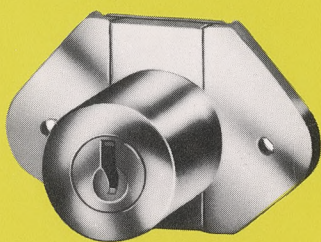
CABINET LOCKS

STOCK LOCK SERIES

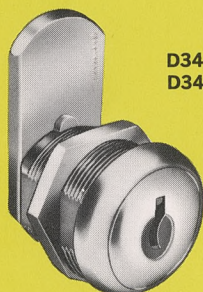
This attractive line of Illinois cabinet locks is carried in stock. They can be used for both original equipment or replacement installations. They are suited for drawers, doors (right or left hand), lids, sliding doors and other applications. Use them where neat appearance and quality are desired in a cabinet lock.



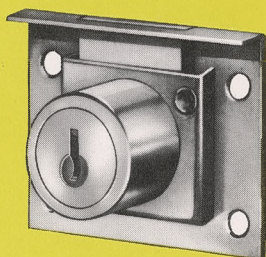
D3425J
D3425K



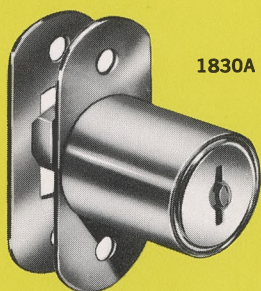
D3048A



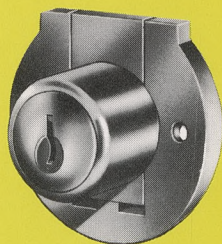
D3410E
D3412F



D3013A



1830A



3045

No.	Size	Drop	Cylinder Length	Material	Finish	Weight per Carton
D3048A	2"x1 1/4"	3/4"	7/8"	Brass, Zinc, Steel	Satin Brass	2 lb., 14 oz.
3045	1 1/4"	3/4"	27/32"	"	"	2 lb., 14 oz.
D3013A	2"x1 1/2"	3/4"	27/32"	"	"	3 lbs.
D3410E	3/4" dia.	1 1/2"	5/8"	"	Bright Nickel	1 lb., 10 oz.
D3425J	3/4" dia.	1 1/2"	27/32"	"	"	2 lb., 2 oz.
D3425K	3/4" dia.	1 1/2"	1 3/32"	"	"	2 lb., 4 oz.
*D3412F	3/4" dia.	1 3/4"	1 1/32"	"	"	1 lb., 6 oz.
1830A	7/8" dia.	—	1"	Brass	Dull Chrome	1 lb., 6 oz.

*Cam not removable.

Packed 12 to a display carton, except #1830A which is packed 6 to a carton. Locks are available either all K/A or all K/D. All locks have key removable in both locked and unlocked positions.

Locks must be ordered in quantities of 12 (or 6 in the case of 1830A). Cartons will not be broken.

KEYS & MECHANISM

An economy line of Cabinet locks with a 5 disc tumbler mechanism. Keys are single bitted with serrations cut on one side. Up to 200 key changes are available and keys can be duplicated on standard key cutting machines.



THE ILLINOIS LOCK COMPANY

301 W. Hintz Rd., Wheeling, Illinois 60090 Area Code 312, LE 7-1800

THE ILLINOIS LOCK COMPANY

301 WEST HINTZ ROAD. WHEELING, ILLINOIS 60090 • PHONE A. C. 312-LEHIGH 7-1800

Subsidiary of the Eastern Company

March 9, 1979

Mr. John Bennett
J. R. Simplot Co.
P.O. Box J
Hermiston, OR 97838

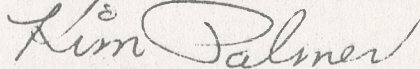
Gentlemen:

In reply to your request, we are pleased
to forward our literature.

If we may be of further service to you,
please contact the writer.

Very truly yours,

ILLINOIS LOCK COMPANY

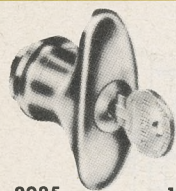


Kim Palmer.
Supervisor-Sales Staff.

KP:rhb

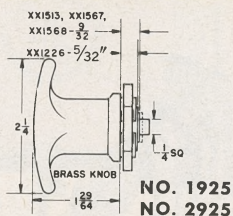


Knob Locks

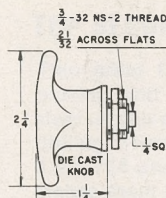


2925

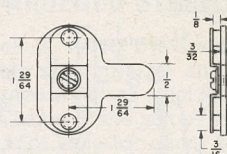
1925



NO. 1925
NO. 2925



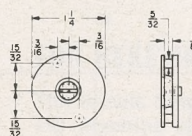
NO. D3945
NO. D7945



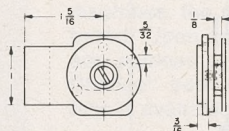
NO. XX1513
3-way latch right
or left 52° turn.

SEE PAGES 2 AND 3 FOR MECHANISM SPECIFICATIONS

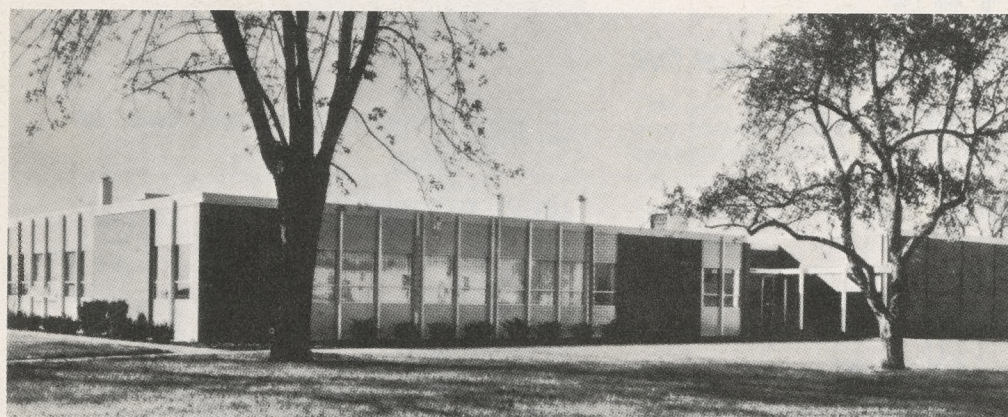
DESCRIPTION	CAT. NO.	MECHANISM TYPE
All brass knob lock.	2925	A
Right or left hand.	1925	C
All brass knob latch.	2926	
Right or left hand.		
All brass knob only.	2927	
Die-cast alloy knob lock.	D7945	F
Right or left hand.	D3945	G
Die-cast alloy knob latch.	D3946	
Right or left hand.		
Die-cast knob only.	D3947	



NO. XX1567
right turn.
No. XX1568
left turn.
2-way latch 52° turn.



NO. XX1226
sliding latch bolt.
right or left 45° turn.



THE ILLINOIS LOCK COMPANY...

the source for manufacturers requiring small components and assemblies:

- **Design and engineering** from concept to prototype.
- **Tooling and manufacturing** from prototype to production.
- **A fully integrated organization** to assume complete responsibility for your requirements.
- **Manufacturing facilities** include diecasting machines for Zamak #3 zinc-alloy; punch presses up to 40-ton capacity, including automatic blanking; screw machines; broaching, threading, tapping, and drilling machines; finishing and plating; and highly skilled small-assembly department.

THE ILLINOIS LOCK COMPANY

Division of the EASTERN COMPANY

302 West Hintz Rd.

Wheeling, Illinois 60090

Area Code 312 LE 7-1800

